



# City of Greater Shepparton Family and Children's Services Directory

A guide to services for families with  
children aged up to 12 years



Best Start 

  
GREATER  
SHEPPARTON

## EMERGENCY NUMBERS

<b>Police</b>	<b>000</b>
<b>Fire Brigade</b>	<b>000</b>
<b>Ambulance</b>	<b>000</b>
<b>Shepparton Police (General Enquiries)</b>	<b>5820 5777</b>
<b>Poisons Information Centre</b>	<b>131 126</b>
<b>Hospital</b> Goulburn Valley Health Graham Street, Shepparton	<b>5832 2322</b>
<b>Interpreter Service</b>	<b>131 450</b>
<b>VincentCare Victoria</b>	<b>5821 9458</b>
<b>Nurse On Call</b>	<b>1300 606 024</b>
<b>National Home Doctor Service</b>	<b>137 425</b>

## USEFUL WEBSITES

**You may find useful and relevant information at the following websites**

**Department of Education and Training**  
[www.education.vic.gov.au](http://www.education.vic.gov.au)

**Department of Health Services**  
[www.dhs.vic.gov.au](http://www.dhs.vic.gov.au)

**Department of Families, Fairness and Housing**  
[www.dffh.vic.gov.au](http://www.dffh.vic.gov.au)

**Better Health Channel**  
[www.betterhealth.vic.gov.au](http://www.betterhealth.vic.gov.au)

**Parenting Research Centre**  
[www.parentingrc.org.au](http://www.parentingrc.org.au)

**Greater Shepparton City Council**  
[www.greatershepparton.com.au](http://www.greatershepparton.com.au)

**Australian Breastfeeding Association**  
[www.breastfeeding.asn.au](http://www.breastfeeding.asn.au)

**Post and Ante Natal Depression – PANDA**  
[www.panda.org.au](http://www.panda.org.au)

**Immunise Australia**  
[www.immunise.health.gov.au](http://www.immunise.health.gov.au)

**Raising Children Network**  
[www.raisingchildren.net.au](http://www.raisingchildren.net.au)

**Australian Children’s Education & Quality Authority**  
[www.acecqa.gov.au](http://www.acecqa.gov.au)



# CONTENTS

- Aboriginal Services..... **9**
- Accommodation and Housing ..... **12**
- Advice, Counselling and Referral..... **15**
- Breastfeeding Support ..... **21**
- Child Care Centres ..... **23**
- Child Protection and Family Violence Services ..... **30**
- Disability and Special Needs Information and Services..... **33**
- Ethnic Specific Services..... **37**
- Family and Parent Support Services..... **39**
- Financial Assistance and Counselling..... **45**
- Health Services..... **46**
- Immunisation..... **48**
- Legal Services..... **49**
- Leisure and Recreational Activities ..... **51**
- Library and Toy Library Services ..... **53**
- Maternal and Child Health Service..... **55**
- Neighbourhood/Community Houses..... **57**
- Playgroups..... **59**
- Pre-kindergarten and Kindergarten Services ..... **61**
- Primary Schools..... **67**





# INTRODUCTION

The Greater Shepparton municipality was created in 1994 as a result of local government amalgamations. It covers an area of 2,427 km<sup>2</sup> and has an estimated population of 66,000, of which almost 8,000 are aged 0 to 8 years.

The Greater Shepparton population reflects diverse ethnicity with the major non-Australian born groups being Italian, Greek, Turkish, Macedonian, Albanian and Iraqi. Greater Shepparton has the highest non-metropolitan Koori population in Victoria and has also resettled approximately 2000 Arabic speaking refugees.

## **Our Vision**

Better outcomes for all children and their families in our community.

## **Our Commitment**

We provide leadership, advocacy and support for all children and their families in our community.

---

## **Greater Shepparton City Council**

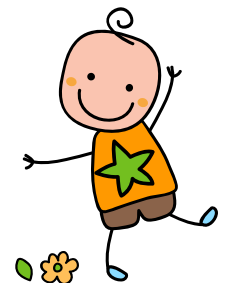
The Early Years Department at the Greater Shepparton City Council offers a range of services to cater for families in the area, including long day care, occasional care, kindergartens and playgroups. Staff can provide information on other child and family services available in Greater Shepparton. Councils Customer Service Department has a focus on being a 'one stop' shop, with the Customer Service team dealing with general enquiries and information.

📍 90 Welsford Street Shepparton, 3630

☎ 03 5832 9700

✉ council@shepparton.vic.gov.au

🌐 www.greatershepparton.com.au







# ABORIGINAL SERVICES

## **Rumbalara Aboriginal Cooperative**

Rumbalara Aboriginal Cooperative has been operating for over 35 years and provides a wide range of services to the Koori community including Youth and Family services, Health services, Housing, and Capital Works and Aged Care and Disability Services.

- 📍 20 Rumbalara Road Mooroopna, 3629
- ☎ 5820 0000
- ✉ [teamleader.rfs@raclimited.com.au](mailto:teamleader.rfs@raclimited.com.au)
- 🌐 [www.rumbalara.org.au](http://www.rumbalara.org.au)

---

## **Aboriginal Legal Information and Advocacy Service**

The Rumbalara Lawyer is a program of Goulburn Valley Community Legal Centre. Lawyers are present onsite at Rumbalara each morning Mon-Fri and provide free information, advice and casework assistance to Aboriginal and Torres Strait Islander peoples in a culturally safe and therapeutic environment. Appointments can also be made to see lawyers at the Shepparton office if preferred.

- 📍 Suite 1, 98 Nixon St Shepparton, 3630
- ☎ 5820 0000
- ✉ [vals@vals.org.au](mailto:vals@vals.org.au)
- 🌐 [www.vals.org.au](http://www.vals.org.au)

---

## **Lulla's Children & Family Centre**

Lulla's is a long day care centre, also providing funded year before school kindergarten, pre-kindergarten and play group

- 📍 44 Edward St Shepparton, 3630
- ☎ 03 4800 5295
- ✉ [info@lullascentre.com](mailto:info@lullascentre.com)
- 🌐 [www.lullascentre.com](http://www.lullascentre.com)

### Rumbalara Family Services

Rumbalara Family Services offers support and referral to other services for Indigenous families in times of crisis and need, building on the families strengths, while maintaining cultural sensitivity. The service aims to preserve the family unit. Respite services offered give parents a break.

- 📍 20 Rumbalara Road Mooroopna, 3629
- ☎ 03 5831 2010
- 🌐 [www.rumbalara.org.au](http://www.rumbalara.org.au)

### Rumbalara In Home Support Program

Rumbalara In Home Support Program is available to families who have Aboriginal children between the ages of 0-3 years old. The objectives of the program are to improve the health, development, learning and wellbeing of Aboriginal babies and children from birth to 3 years of age. In Home Support provides support and guidance in parenting skills in the family's home and group activities, social interaction with other mothers in jewellery making, scrap booking, playgroup, toddler swimming lessons, water aerobics, etc.

- 📍 20 Rumbalara Road Shepparton, 3630
- ☎ 03 5820 0000

### Goulburn Valley Health Hospital Aboriginal Liaison Officer

The Aboriginal Liaison Officer provides information and support to Aboriginal and Torres Strait Islander hospital patients and their families. The Aboriginal Liaison Officer advocates and liaises on behalf of the patients and their families.

### Goulburn Valley Health

- 📍 Graham Street Shepparton, 3630
- ☎ 03 5832 2450
- 🌐 [www.gvhealth.org.au](http://www.gvhealth.org.au)

### Rumbalara Family Preservation and Extended Care

Support and empowerment of families to resolve issues regarding safety, wellbeing and family dynamics that are impacting on their ability to care for Aboriginal and Torres Strait Islander children and young people.

- 📍 20 Rumbalara Road Mooroopna, 3629
- ☎ 03 5820 0000



# ACCOMMODATION AND HOUSING



## Pathways Accommodation and Support Program

Pathways provides a range of services and programs for disadvantaged and marginalised families, single adults, families experiencing financial difficulty or needing professional support, the homeless and those at risk of homelessness. Pathways can provide outreach services for families needing ongoing support and assistance.

### The Salvation Army (Pathways)

📍 27 Wyndham Street Shepparton, 3630

☎ 03 5820 8000

✉ pathways@aus.salvationarmy.org

🌐 www.salvationarmy.org

---

## GV Community Care and Emergency Relief

Providing a referral service for accommodation and housing and relief meals in an emergency 10:00am-3:00pm.

### Shepparton Family & Financial Services

📍 1 Naomi Street Shepparton, 3630

☎ 03 5831 7755

---

## Beyond Housing (Previously Rural Housing Network)

The Rural Housing Network is a community housing agency which operates across the Hume region. The agency provides assistance to people who are 'homeless or at risk of homelessness'. The service includes financial assistance, traditional housing, advocacy and assistance with both public and private housing applications. This service is free and available to all Hume region residents.

📍 43B Wyndham Street Shepparton, 3630

☎ 03 5833 1000

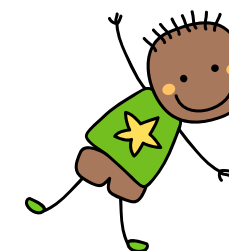
✉ info@beyondhousing.org.au

## Department of Families, Fairness and Housing

The Department of Families, Fairness and Housing (DFFH) works hard to create equal opportunities for all Victorians to live a safe, respected and valued life. Our areas of focus are child protection, housing, disability, the prevention of family violence, multicultural affairs, LGBTIQ+ equality, veterans, women and youth.

📍 163 Welsford Street Shepparton, 3630

☎ 03 5832 1500







# ADVICE, COUNSELLING AND REFERRAL

## **Child FIRST**

Child FIRST provides a single entry point into family services for children and their families. Children and families can be offered support, information, advice and referrals to Family Services or other services.

Child FIRST are now located with The Orange Door

📍 210 Corio Street Shepparton, 3630  
☎ 1800 634 245

---

## **Telephone Crisis and Counselling Service**

### **Lifeline**

24 hour crisis counselling service.

☎ 131 114  
🕒 24 Hours

---

## **Post and Ante Natal Depression Association (PANDA)**

Support line open Monday to Friday. For assistance afterhours please call Lifeline, Parentline or the Maternal and Child Health Line.

☎ 1300 726 306  
🕒 10am - 5pm  
✉ info@panda.org.au

---

## **Parentline**

Information and advice service for parents and caregivers of children from birth to 18 years of age available every day.

☎ 1300 301 300  
🕒 8:00am - 10:00pm

---

## **Mensline Australia**

A dedicated service for men with relationship and family concerns.

☎ 1300 789 978





### **Kids helpline**

Kids Helpline is a free Australian telephone and online counselling serviced for young people aged between 5 and 25.

☎ 1800 55 1800

---

### **Uniting**

#### **Care Ring**

CareRing provides an extensive range of financial support services through a centralised, co-ordinated point of contact.

📍 136 Maude St Shepparton, 3630

☎ 5831 6157

✉ info@kildonan.org.au

---

### **Kids Help Line**

24 Hour counselling service for children and young people.

☎ 1800 55 1800

🕒 24 Hours

---

### **Safe Steps Family Violence Response Centre**

24 Hour counselling service.

☎ 1800 015 188

🕒 24 Hours

---

### **Women's Information and Referral Exchange (W.I.R.E)**

W.I.R.E offers a free information and referral service for all Victorian women no matter what the issue

☎ 1300 134 130

🕒 9:00am - 5:00pm

---

### **Maternal and Child Health Line**

After hours advice and support line.

☎ 132 229

Telephone Interpreter Service

☎ 131 450

🕒 24 Hours

---

### **Tenants Advice and Advocacy Service**

Free call service

☎ 1800 642 609

---





### **Goulburn Valley Pregnancy Support Service**

Goulburn Valley Pregnancy Support provides a community-based service to pregnant women and/or families with children 0-6 years. Telephone and face-to-face is offered.

📍 15A St. Andrews Road Shepparton, 3630

☎ 03 5821 0826

✉ [gv@caroline.org.au](mailto:gv@caroline.org.au)

🕒 By appointment only

---

### **GVCASA: Goulburn Valley Centre Against Sexual Assault**

📍 130 Nixon St Shepparton, 3630

☎ 5831 2343

☎ 1800 112 344







# BREASTFEEDING SUPPORT

## **Goulburn Valley Health Breastfeeding Support and Service**

This service offers mothers support and advice relating to breastfeeding of their baby and settling techniques staffed by qualified lactation consultants.

📍 Graham Street Shepparton, 3630  
☎ 03 5831 1370

---

## **Australian Breastfeeding Association**

The Shepparton Group for the Australian Breastfeeding Association (ABA) offers counselling, community education, electric breast pump hire, and breastfeeding resources for loan. For more information about the group visit [www.facebook.com/ABAShepparton](https://www.facebook.com/ABAShepparton).

☎ 1800 686 268  
🕒 24 Hours

---

## **Breastfeeding Friendly Locations Map**

Greater Shepparton City Council has developed a mobile app for breastfeeding friendly locations within the municipality. This website allows parents to search for breastfeeding friendly locations by simply visiting [www.breastfeedingmap.com.au](http://www.breastfeedingmap.com.au) on your mobile device.

## **Breastfeeding Friendly Locations phone app**

📍 [www.breastfeedingmap.com.au](http://www.breastfeedingmap.com.au)

---

## **Maternal and Child Health**

Your local Maternal and Child Health nurse can also provide breast feeding advice and support. Look under the Maternal and Child Health section of this directory to find the centre closest to you.

## **Greater Shepparton City Council**

☎ 03 5832 9312  
📍 [greaterhepparton.com.au](http://greaterhepparton.com.au)

---

## **Parent Child Program**

The Parent Child Program provided through FamilyCare is a free service to help parents with children from newborn to 4 years old. The service offers assistance with breastfeeding, bottle feeding, food refusal, weaning, returning to work, settling issues, sleep disturbance, routines and behaviour management.

## **Parent Child Program**

📍 19 Welsford Street Shepparton, 3630  
☎ 03 5823 7000



# CHILD CARE CENTRES

## Long Day Care (Council Operated)

### Arthur Dickmann Children's Centre

📍 104-106 Maude Street Shepparton, 3630

☎ 03 5821 3880

✉ [arthur.dickmann@shepparton.vic.gov.au](mailto:arthur.dickmann@shepparton.vic.gov.au)

### Frank R. Pullar Children's Centre

📍 168 Echuca Road Mooroopna, 3629

☎ 03 5832 5190

✉ [frank.pullar@shepparton.vic.gov.au](mailto:frank.pullar@shepparton.vic.gov.au)

### Nancy Vibert Occasional Child Care Centre

📍 18 Edward Street Shepparton, 3630

☎ 03 5832 9560

✉ [nancyvibert@shepparton.vic.gov.au](mailto:nancyvibert@shepparton.vic.gov.au)

### Mooroopna Children and Families Centre

📍 16-18 O'Brien Street Mooroopna, 3629

☎ 03 5832 5170





### Long Day Care (Community Managed)

#### Kialla Children's Centre

📍 Reserve Street Kialla, 3631  
☎ 03 5823 2746  
✉ office@kiallachildrenscentre.com

#### Lulla's Children & Family Centre

📍 44 Edwards Street Shepparton, 3630  
☎ 03 4800 5295  
✉ info@lullascentre.com

#### Tatura Children's Centre

📍 5-9 Kerferd Street Tatura, 3616  
☎ 03 5824 1415  
✉ tcc@mcmedia.com.au

### Long Day Care (Privately Operated)

#### Good Start Early Learning

📍 49-51 Burchier Street Shepparton, 3630  
☎ 03 5831 6465  
✉ kcq@goodstart.org.au

#### Good Start Early Learning

📍 132-134 Archer Street Shepparton, 3630  
☎ 03 5822 2830  
✉ shs@goodstart.org.au

#### Apple Blossom Early Learning

📍 21 Ann Street Mooroopna, 3629  
☎ 03 5825 3933  
✉ annst@appleblossoms.com.au

#### Balaclava Road Childcare Centre

📍 205 Balaclava Road Shepparton, 3630  
☎ 03 5821 0396  
✉ info@balaclavardchildcare.com.au

#### Wyndham Early Learning

📍 617 Wyndham St Shepparton, 3630  
☎ 03 5822 2372  
✉ enquiries@wyndhamearlylearning.com

#### Inspira Kids

📍 Shop 21C Riverside Plaza Kialla, 3631  
☎ 03 5897 7167  
✉ enquiries@inspirakids.com.au

#### Little Stars Florina Child Care and Kindergarten

📍 Cnr Hawdon and Knight Street Shepparton, 3630  
☎ 03 5821 7805  
✉ florina.cc@optusnet.com.au

#### Guthrie Street Childcare Centre

📍 52 Guthrie Street Shepparton, 3630  
☎ 03 5821 1711  
✉ info@guthriestchildcare.com.au

#### Community Kids Shepparton

📍 122 Graham Street Shepparton, 3630  
☎ 03 5821 7511  
✉ shepparton@communitykids.com.au

#### Knight Street Multi-Age Learning

📍 164 Knight Street Shepparton, 3630  
☎ 03 5831 8911  
✉ info@kscc.net.au

#### Busy Bees

📍 2 - 10 St Georges Road Shepparton, 3630  
☎ 03 5849 1655  
✉ shepparton@nidoearylschool.com.au





#### **Occasional Care (Council Operated)**

##### **Nancy Vibert Occasional Child Care Centre**

📍 18 Edward Street Shepparton, 3630

☎ 03 5832 9560

##### **Tallygaroopna Occasional Care**

📍 33 Victoria Street Tallygaroopna, 3634

☎ 03 5829 8274

##### **Katandra West Occasional Care**

📍 33 Bankin Street Katandra West, 3634

☎ 03 5828 3254

---

#### **Occasional Care (Community Managed)**

##### **Gowrie Street Pre School and Occasional Care**

📍 Balaclava Road Shepparton, 3630

☎ 03 5821 3346

##### **Tatura Community House and Occasional Care**

📍 12-16 Casey Street Tatura, 3616

☎ 03 5824 1315





### Family Day Care

#### Greater Shepparton City Council Family Day Care

📍 10-14 Parkside Drive Shepparton, 3630

☎ 03 5822 1373

### Vacation Care Program

A number of Vacation Care programs run throughout the Greater Shepparton municipality. Vacation Care is specifically designed for primary school aged children, aged between 5 and 12 for care during the school holidays. For further information relating to the current programs contact your local primary school or community house.

### Department of Education and Training (DET)

If parents have concerns regarding the health, safety or wellbeing of any child within any children's service they can contact the DET and speak to the Children Service's Advisor.

📍 180 High Street Shepparton, 3630

☎ 1300 333 231

nevr@education.vic.gov.au



# CHILD PROTECTION AND FAMILY VIOLENCE SERVICES

## Centre Against Sexual Assault (CASA)

CASA provides a free and confidential service for victims/survivors of sexual assault to help them overcome the trauma of assault and its consequences.

📍 130 Nixon Street Shepparton, 3630  
☎ 03 5831 2343  
Fax: 1800 112 343  
✉ gvcasa@gvhealth.org.au

## Child FIRST

Child FIRST provides a single entry point into family services for children and their families. Children and families can be offered support, information, advice and referrals to Family Services or other services.

📍 210 Corio Street Shepparton, 3630  
☎ 1800 634 245

## Department of Human Services Child Protection Service

📍 163-167 Welsford Street Shepparton, 3630  
☎ Central Intake: 1800 650 227

## Child Protection After Hours Service

Monday - Friday  
☎ 131 278

## Marion Community

Marion Community provides a support service for women and children affected by family violence. It supports women and children to gain access to practical assistance, services and information in order to establish a life free of violence.

📍 114 Welsford Street Shepparton, 3630  
☎ 03 5821 9458  
After hours: 1800 015 188  
✉ mariancommunity@vincentcare.org.au

## Parentline

Provides a telephone counselling service for parents who fear they might hurt their children or who have done so.

☎ 1300 301 300

## Relationships Australia

Offers group programs for men and women over an 8 week period. Focus is on attitudinal and behavioural changes as well as recovery from family violence.

📍 634 Wyndham Street Shepparton, 3630  
☎ 03 5820 7444

## Tatura Community House

Refers counselling for women on issues such as relationships and family violence.

📍 12-16 Casey Street Tatura, 3616  
☎ 03 5824 1315

## Victorian Police Sexual Offence and Child Abuse Unit

The unit deals with investigation of adult sexual assault and child physical and sexual abuse. The police officers are experienced in welfare and family problems.

📍 155 Welsford Street Shepparton, 3630  
☎ 03 5820 5878

## The Orange Door

The Orange Door is a free service for adults, children and young people who are experiencing or have experienced family violence and families who need extra support with the care of children.

You should contact The Orange Door if:

- someone close to you is hurting you, controlling you or making you feel afraid – such as your partner, family member, carer or parent(s)
- you are a child or young person who doesn't have what you need to be OK
- you are worried about the safety of a friend or family member
- you need more support with the care of children, e.g. due to money issues, illness, addiction, grief, isolation or conflict
- you are worried about the safety of a child or young person
- you need help to change your behaviour and stop using violence in your relationships

📍 210 Corio Street Shepparton, 3630  
☎ 1800 634 245  
✉ goulburn@orangedoor.vic.gov.au  
🌐 www.orangedoor.vic.gov.au





# DISABILITY AND SPECIAL NEEDS INFORMATION AND SERVICES

## **Australian Hearing Shepparton**

Provides Government funded hearing care to pensioners, most DVA beneficiaries and children under 21 years of age.

📍 205 Fryers Street Shepparton, 3630

☎ 03 5823 7500

---

## **Autism Victoria - Amaze**

Autism Victoria is the first place to call for information and advice for anyone wanting to find out more about the disorder. The Autism Victoria Family Support Service and Autism Victoria Advice Information Service provides timely specialist support and advice for families caring for a child or adult with an Autism Spectrum Disorder.

☎ 03 9657 1600

---

## **FamilyCare**

Assisting carers of people who have disabilities, aged care issues, mental health problems or chronic illness with access to respite (in home and residential) and other appropriate services.

📍 19 Welsford Street Shepparton, 3630

☎ 03 5823 7000

✉ [info@familycare.net.au](mailto:info@familycare.net.au)

---

## **Deaf VICTORIA**

This service offers information, advocacy and community education for deaf and hard of hearing members of the Hume Region, their friends and carers.

📱 SMS: 0419 586 979

✉ [support@primarycareconnect.com.au](mailto:support@primarycareconnect.com.au)

---

## **SPELD Victoria**

An association of parents and professional people interested in children and adults with specific learning difficulties. Offers Learning Difficulty Assessments, Intervention Services and Training.

📍 60 High Street Preston, 3072

☎ 03 9480 4422



### **Goulburn Valley Health Community Interlink Programs**

Flexible Care Packages - the goal of this program is to strengthen the capabilities of families to take care of their family member with a disability at home. The program is available to the families and carers of people with a disability between the ages of 0 to 64. Early Intervention Specialist Support Initiative (EISSI) – provides a range of Early Intervention services to children who have a developmental delay or disability, assisting their families to enhance their child’s development and education. EISSI services are available to families of children aged from birth to 6 years.

📍 121-135 Corio Street Shepparton, 3630  
☎ 1300 203 203

---

### **Inspired Carers**

This group provides support, information, referral, social support and education for families and the wider community. A recreation and leisure program also runs for school aged brothers and sisters of children with additional needs.

📍 11 Bowenhall Street Shepparton, 3630  
☎ 03 5831 7157  
✉ manager@inspiredcarers.org.au

---

### **The Rise Centre (Kiwaniis House Special Needs Centre)**

The Rise Centre provides resources and services for children with special needs and their families. A Toy Library is available for families to borrow toys and resources for a minimum cost. Playgroups and therapy sessions also run from the Rise Centre.

📍 38 Packham Street Shepparton, 3630  
☎ 03 5822 1230  
✉ gvsntl@iinet.net.au

---

### **Right, Information and Advocacy Centre**

The Regional Information and Advocacy Council is an independent advocacy service for people with disabilities.

📍 78-82 Wyndham St Shepparton, 3630  
☎ 03 5222 5944

### **Royal Children’s Hospital’s Learning Difficulties Clinic**

The Learning Difficulties clinic at the Centre for Community Child Health supports primary school aged children with learning difficulties.

📍 Flemington Road Melbourne, 3000  
☎ 03 9345 6180

---

### **DFFH Respite Care**

The Department of Families, Fairness and Housing Children’s Respite Program offers short term respite for families and carers with a child aged 0 to 18 years with an intellectual disability.

### **Department of Families, Fairness and Housing Children’s Respite**

📍 124 Sobraon Street Shepparton, 3630  
☎ 03 5821 6051

---

### **Berry Street**

Berry Street - Hume Region offers an Integrated Home Based Care Program which includes services such as General Foster Care (including emergency, respite, short term care and reception care) and Shared Family Care for children with a disability.

📍 110 Wyndham Street Shepparton, 3630  
☎ 03 5822 8100  
✉ sheppartonadmin@berrystreet.org.au



# ETHNIC SPECIFIC SERVICES

## Scope Early Years Development Program

This program recognises that some children require additional support in their kindergarten year and aims to find the most appropriate service for you and your family.

- 📍 7961 Wyndham Street Shepparton, 3630
- ☎ 03 235 699
- ✉ shepparton@scopeaust.org.au

## Community Transport Greater Shepparton

A volunteer supported community service that provides transport to local residents who are not able to access other forms of transport.

- 📍 15 Glenn Street Shepparton, 3630
- ☎ 03 5831 8515
- ✉ info@gettingthere.net.au

## Verney Road School

This school provides educational programs to meet the needs of students with mild to profound intellectual and/or multiple disabilities, aged 2 years and 8 months to 18 years.

- 📍 2 Verney Road Shepparton, 3630
- ☎ 03 5821 8185
- ✉ verney.road.sch@education.vic.gov.au

## Very Special Kids

Very Special Kids improves the quality of life for families of children with a progressive life-threatening illness.

- 📍 23 Alexandra Street Mooroopna, 3629
- ☎ 03 5825 3760
- 🌐 vsk.org.au

## Ethnic Council of Shepparton and District

The Ethnic Council is a non-profit community based service and is responsive to the expressed needs of culturally and linguistically diverse groups in the area. The Ethnic Council also advocates for the appropriate community and government development of service provision and change.

- 📍 158 Welsford Street Shepparton, 3630
- ☎ 03 5831 2395
- ✉ ecshepp@mcmedia.com.au

## Interpreting Service

The Department of Immigration and Citizenship (DIAC) provides the TIS National interpreting service for people who do not speak English and for the English speakers who need to communicate with them. TIS National has access to over 1300 contracted interpreters across Australia, speaking more than 120 languages and dialects. TIS National is available 24 hours a day, seven days a week for any person or organisation in Australia requiring interpreting service. To use an interpreter over the telephone please call 131 450.

- 🌐 tisonational.gov.au





# FAMILY AND PARENT SUPPORT SERVICES

## **Centacare**

Centacare is a family welfare agency providing services which are relevant and responsive to individuals, couples, families and groups. Centacare seeks to empower and maximise the potential of individuals, couples and families through a range of high quality professional services.

📍 68 Wyndham Street Shepparton, 3630

☎ 03 5831 4699

## **OzChild Shepparton**

We are focused on providing support for children and young people in foster and kinship care and keeping families together where possible. This is done through the delivery of evidence-based programs and services aimed at strengthening and repairing relationships.

📍 56 High Street Shepparton, 3630

☎ 03 5829 6503

🌐 [ozchild.org.au](http://ozchild.org.au)





### Greater Shepparton Lighthouse Project

Greater Shepparton Lighthouse Project is a not for profit organisation, the wish is to see all young people realise their full potential and thrive from conception to career. Lighthouse is using an army of volunteers, data, collaboration, and system thinking to support children every step of their trajectory. Some of the early year's incentives are below.

🌐 [gslp.com.au](http://gslp.com.au)

### The Haven

The Haven offers a safe, welcoming space for young people to:

- Gather and relax
- Make new friends
- Meet potential mentors and role models
- Access food and other necessities
- Participate in recreational activities
- Learn new skills and
- Access opportunities to support their wellbeing

📍 92 Wyndham Street Shepparton (next door to the RSL)

☎ 0487 315 999

✉ Monday to Thursday from 4pm to 8pm for young people aged 12 - 24 years

🕒 Friday from 4pm - 7pm for young people 8 - 12 years old.

### The Family Haven Mooroopna

Parents and children can relax, engage with staff and volunteers, share a meal and connect with other parents. The focus is on play and fun. Parents can also be helped to access additional supports where required. The Family Haven also offer transport and are able to pick families and children up and drop them home.

The Family Haven provides a safe space where parents and carers and their children are welcomed with no referral or appointment.

### Mooroopna Anglican Church

📍 15-17 Young Street, Mooroopna (the old SPC canteen)

🕒 Tuesday to Thursday from 9.30am - 3pm

### Home-start

Home-start is a volunteer based program and works directly in the home with families in the community. Home-start is a free home visiting service that has been created to support early years outcomes for our children.

The Program:

- Provide support to isolated and marginalised parents with young children.
- Improve parenting capacity.
- Encourage better connections with community services.
- Build stronger relationships with family and extended family
- Support strong outcomes for children to be ready for school.

☎ 0428 736 961



### Primary Care Connect

Primary Care connect provides a variety of services that can assist in enhancing the family unit through addressing individual issues impacting upon the family. The Generalist Counselling Program provides counselling to both individuals and families, and is solution focused to address a range of issues including depression, anxiety, communication problems, motivation and lifestyle issues. The Parenting Education Program offers one to one consultations on parenting issues and has a large number of parenting related resources such as tip sheets, books and videos. Other services and programs include:

- Primary Health Program
- Drug and Alcohol support
- Financial Counselling
- Gamblers Help
- Needle Exchange
- Refugee Services
- Support Accommodation Program
- Parent Education
- Dietician

📍 399 Wyndham Street Shepparton, 3630

☎ 03 5823 3200

🌐 [primarycareconnect.com.au](http://primarycareconnect.com.au)

---

### Uniting

Uniting is a child-safe and child-friendly organisation that ensures children both feel safe and are safe, and valued. Uniting is committed to safeguarding children and young people from all forms of violence, abuse, maltreatment and neglect and ensuring our staff and volunteers act to promote and protect child safety and wellbeing.

📍 136 Maude Street Shepparton, 3630

☎ 03 5831 6157

🌐 [unitingvictas.org.au](http://unitingvictas.org.au)

---

### FamilyCare

FamilyCare recognises that being part of a family can be great whether you are just starting out with young children, experiencing living with adolescents for the first time or caring for an older person or someone with a disability. There are also times when it is not so great and downright challenging. FamilyCare provides a range of services that can assist families experiencing problems or difficulties to find their own solution. They can offer family counselling for individuals, couples, children or for the whole family. Specific programs include anger management for men, relationships and parenting, help in the home with managing children through various stages of life and family issues, day stay programs for infants and parents, recreational activities and host families to assist families who have a child with special needs, information and respite for carers.

📍 19 Welsford Street Shepparton, 3630

☎ 03 5823 7000

🌐 [familycare.net.au](http://familycare.net.au)

---

### Goulburn Valley Pregnancy Support and Family Services

Goulburn Valley Pregnancy and Family Support Services provide a listening ear and practical support services to meet the physical, psychological and social wellbeing of pregnant women, parents and their young children.

📍 15A St Andrews Road Shepparton, 3630

☎ 03 5821 0826

🕒 By appointment only

---

### Relationships Australia

Relationships Australia is a not for profit, community based organisation providing a range of services to individuals, couples, families and children. Services include counselling, relationship education, family violence prevention, primary dispute resolution for separated families and pre-marriage counselling.

📍 634 Wyndham Street Shepparton, 3630

☎ 03 5820 7444

🌐 [relationshipsaustralia.com.au](http://relationshipsaustralia.com.au)

---



# FINANCIAL ASSISTANCE AND COUNSELLING

## The Bridge

The Bridge Youth Service is a key agency in the Goulburn Valley working with and advocating for young people. The Bridge works with and supports young people and their families with a particular focus on those from marginalised and/or disadvantaged backgrounds. However, our philosophy includes the provision of services to all young people. The Bridge offers a range of programs funded by government, private foundations and the local community. Programs focus on a diversity of issues and services include placement prevention, family reconciliation, family mediation, healthcare, creative arts and school support. For more information visit our website: [www.thebridge.org.au](http://www.thebridge.org.au)

The Bridge Youth Service aims to support the empowerment of young people, families and the community, through the provision of quality programs and services, flexibly delivered according to individual and community need. The Bridge is primarily a Youth Service; we also encourage parents, family members and carers of young people to contact us if assistance is required. Programs and services provided by The Bridge include:

- Youth Mentoring Program
- Youth Focused Antenatal Care and Education Program
- Parenting Support and Education
- Family Mediation and Reconciliation for Young Mothers
- After School Programs (Youthlink)
- Housing and homelessness Support
- Youth Art and Music
- Relationship Help
- General Youth Support

📍 127 Welsford Street Shepparton, 3630

☎ 03 5831 2390

🌐 [thebridge.org.au](http://thebridge.org.au)



## Marian Community

Marion Community provides a support service for women and children affected by family violence. It supports women and children to gain access to practical assistance, services and information in order to establish a life free of violence. Address available upon request.

📍 144 Welsford Street Shepparton, 3630

☎ 03 5821 9458

🌐 [vincentcare.org.au](http://vincentcare.org.au)

## Berry Street Saver Plus Program

Saver Plus is a ten month financial literacy and matched savings program that assists people to build savings for their own or their children's education and in doing so strengthens their capacity to save. As part of the program, participants receive: one dollar in matched savings for every one dollar they save, up to \$500, for education costs; MoneyMinded financial training; and personal support and guidance from a trusted community organisation. At the end of the program participants use their matched savings to purchase an education-related goal, which can include items like school uniforms, computers, and text books.

📍 110 Wyndham St, Shepparton, 3630

☎ 03 5822 8100

🌐 [berrystreet.org.au](http://berrystreet.org.au)

## Primary Care Connect Financial Counselling Service

This is a free service providing counselling to community members who are experiencing financial difficulty. The service provides options for resolving debt issues and acts as advocate with creditors and their agents. Counsellors provide options to client to resolve their immediate problem whilst also offering longer term advice to minimise and potentially avoid further problems. The service has extensive links to other support agencies and will make appropriate referrals as required.

📍 399 Wyndham St, Shepparton, 3630

☎ 03 5823 3200

✉ [support@primarycareconnect.com.au](mailto:support@primarycareconnect.com.au)

## Centrelink

Centrelink offers a range of services for individuals and families and can provide helpful and informative advice.

## Department of Families, Fairness and Housing Children's Respite

📍 298 Maude Street, Shepparton, 3630

☎ 136 150

🌐 [servicesaustralia.gov.au](http://servicesaustralia.gov.au)

# HEALTH SERVICES

## Greater Shepparton City Council Environmental Health Department

Great Shepparton City Council's Health Services department provide advice and assistance on a range of health related issues including:

- Prevention of infectious diseases
- Immunisation
- Head lice

📍 90 Welsford Street Shepparton, 3630

☎ 03 5832 9700

🌐 [greatershepparton.com.au](http://greatershepparton.com.au)

---

## Primary Care Connect

Primary Care Connect offers a variety of services and programs that aim to enhance and promote the health and wellbeing of individuals, families and the community, while preventing illness, disease and injury. Primary Care Connect is open to all members of the community and offers services and programs on and off site. They have GP's and a Podiatrist.

📍 399 Wyndham St Shepparton, 3630

☎ 03 5832 3200

🌐 [primarycareconnect.com.au](http://primarycareconnect.com.au)

---

## Goulburn Valley Health

Regional Public Hospital

📍 Graham Street Shepparton, 3630

☎ 03 5832 2322

🌐 [gvhealth.org.au](http://gvhealth.org.au)

## Medical Centres

A comprehensive list of local medical centres and general practitioners in the Great Shepparton area can be found in the Yellow Pages under 'Medical Practitioner'.

An after-hours Medical Clinic is also available and can be contacted on 137 425

☎ 137425

---

## Smiles 4 Miles

Smiles 4 Miles is an early childhood oral health program promoting three key messages – Eat Well, Drink Well and Clean Well. An initiative of Dental Health Services Victoria, the local program is co-ordinated by Goulburn Valley Health – Health Promotions Unit.

## Community Health @ GV Health

📍 121 Corio Street Shepparton, 3630

☎ 03 5823 7917

---

## 13Sick National Home Doctor

As home visiting doctors we treat all kinds of patients, with all kinds of injuries and illnesses. It may be after work, or late at night, or on the weekend. Any time, in fact, that General Practices are closed, and you urgently need to see a doctor.

☎ 137 425

🌐 [homedoctor.com.au](http://homedoctor.com.au)





# IMMUNISATION

## Immunisation

The Greater Shepparton City Council's Environmental Health Department provides a regular immunisation services in various locations around Great Shepparton. For more information or for an immunisation timetable contact Environmental Health on

☎ 03 5832 9731

## No Jab, No Play

Under the No Jab, No Play legislation, before enrolling a child, early childhood services must obtain evidence that the child is:

- Fully immunised for their age; or
- On a recognised vaccination catch up program; or
- Unable to be fully immunised for medical reasons.

# LEGAL SERVICES

## Victorian Legal Aid

Victoria Legal Aid (VLA) is a government-funded agency set up to ensure that people who cannot afford to pay for a private lawyer can get help with their legal problems. Victorian Legal Aid provides free legal information for all Victorians; provides lawyers on duty in most courts and tribunals in Victoria; and funds legal representation for people who meet its eligibility criteria. Victorian Legal Aid can help people with a range of legal problems, including criminal matters, family breakdown, family violence, mental health and discrimination.

📍 1320-322 Wyndham Street Shepparton, 3630

☎ 03 5823 6200

🌐 [legalaid.vic.gov.au](http://legalaid.vic.gov.au)

## Goulburn Valley Community Legal Centre

Goulburn Valley Community Legal Centre is a free generalist legal service providing information, advice and therapeutic casework assistance to disadvantaged and vulnerable residents of the Goulburn Valley.

📍 11/1 High Street Shepparton 3630

☎ 03 5831 0900

🌐 [arcjustice.org.au](http://arcjustice.org.au)



# LEISURE AND RECREATIONAL ACTIVITIES

## **Leisure and Aquatic Centres**

These centres offer a number of fitness, sporting and recreational activities for the community and offer an extensive range of programs for children and adults. A list of Leisure and Aquatic Centres can be found in the Yellow Pages under Health and Fitness Centres/Services or Sports Centres/Grounds. Alternatively you can visit the Greater Shepparton City Council's website at [www.greatershepparton.com.au/community/recreation/aquamoves](http://www.greatershepparton.com.au/community/recreation/aquamoves) and follow the links.

## **Walks and Bicycle Tracks**

Greater Shepparton has an extensive shared path network for the whole family to enjoy the outdoors and surrounding environment while benefiting from some exercise. For more information about Greater Shepparton's Shared Path Network contact the Council's Recreation, Sports and Leisure Department on 03 5832 9776 or visit [www.getmoovingshepparton.com.au](http://www.getmoovingshepparton.com.au).

## **Parks and Gardens**

Enjoying the outdoors is made easy in Greater Shepparton with a variety of outdoor facilities to enjoy. With an abundant number of parks, reserves and gardens in the area - many with walking tracks, BBQ facilities, toilets and playgrounds - you and your family can enjoy a leisurely day out while taking in the natural environment Greater Shepparton has to offer. Further information can be obtained by contacting Council's Recreational, Sports and Leisure Department on 03 5832 9776 or visiting [www.greatershepparton.com.au/community/recreation/parks-playgrounds-skateparks](http://www.greatershepparton.com.au/community/recreation/parks-playgrounds-skateparks)



# LIBRARY AND TOY LIBRARY SERVICES

## SPC Ardmona KidsTown

Looking for a family outing, a unique children's playground that keeps the kids amused, parents relaxed and won't break the budget? Make your way to SPC Ardmona KidsTown, located on the Peter Ross Edwards Causeway (between Shepparton and Mooroopna). SPC Ardmona KidsTown Adventure Playground boasts play equipment and features that challenge, capture the imagination, thrill and allow for creative and imaginative play. For further information phone 03 5831 4213 or visit the KidsTown website at [www.kidstown.org.au](http://www.kidstown.org.au).

## S-CAPE Regional Skate Park

Greater Shepparton's regional skate park has become one of the most popular and well used facilities for young people in the region. The skate park is located on the foreshore of the Victoria Park Lake. There are large areas of open space where families can relax and enjoy the surroundings, while watching the skaters and bikers in action. For further information on S-Cape, contact the Council's Recreation, Sports and Leisure Department on 03 5832 9776.

## Public libraries

Goulburn Valley Regional Library Corporation provides a range of library services for children and adults in the Greater Shepparton area. Membership to the public library is free and the following services are open to all residents:

- Access to information - reference books, newspapers, magazines, family history resources.
- Involvement - join in activities such as Storytime, author visits and Friends of the Library.
- Computers - surf the internet, email or use the word processors.
- Escape - books for children and adults including large prints.
- Entertainment - videos, DVD's, CD's, books and tapes.

A Mobile Library Services also operates, providing a library service to smaller communities in the Greater Shepparton area. For a complete timetable for the Mobile Library and Branch Library open hours contact any of the branches listed below.

### Mooroopna Library

📍 Morrell St, Mooroopna  
☎ 1300 374 765.

### Shepparton Library

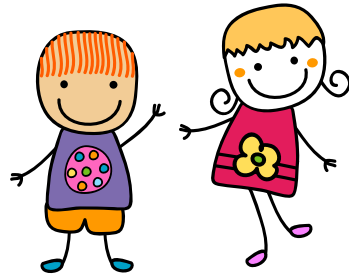
📍 41-42 Marungi Street, Shepparton 3630  
☎ 1300 374 765.

### Tatura Library

📍 12-16 Casey Street, Tatura  
☎ 1300 374 765.  
✉ [gvlibraries.com.au](mailto:gvlibraries.com.au)







# MATERNAL AND CHILD HEALTH SERVICE

## Storytime

Baby Rhyme Time, Rhyme & Story Time is offered at a number of local libraries and is suitable for children aged 0-6 years of age. The sessions are free and include several stories followed by discussion time, a craft activity and rhymes. iTots is for ages 3-5 years and your child will discover apps and programs that educate and entertain. Share songs, stories, felt board fun and much more.

## Toy Libraries

Greater Shepparton has five Toy Libraries families can join. Toy Libraries promote the importance of play in a child's development. Once you become a member of a Toy Library there are many wonderful toys suitable for children of all age groups you can borrow.

## The Rise Centre (special needs families)

📍 38 Packham Street Shepparton, 3630  
☎ 03 5822 1230

## Tatura Toy Library

📍 5-9 Kerferd Street Tatura , 3616  
☎ 03 5824 1415

## The Cubby Toy Library

📍 Cnr Numurkah and Balaclava Road Shepparton, 3630  
☎ 03 5831 4898

Soon after your baby is born, the hospital or midwife will contact the Maternal and Child Health Services (MCH). The Maternal and Child Nurse will contact you to let you know a time and date for them to visit you and your baby at home. After your home visit, regular follow up appointments will be made for you to visit one of Council's Maternal and Child Health centres (usually the centre closest to where you live). The Maternal and Child Health Service is a free service and is available to all families with children aged 0-6 years. The service aims to promote the health and wellbeing of children and provides information and support for:

- Breastfeeding
- Child health and development
- Maternal health and wellbeing, including postnatal depression
- Parent-child relationships
- Family Planning
- Nutrition
- Immunisation
- Parenting support and new parent groups
- Childhood illnesses.

On occasions the local Maternal and Child Health Nurse may refer families who are experiencing difficulties to the Enhanced Maternal and Child Health Service. This is also a free service. An after-hours Maternal and Child Health advice and support line is also available and can be contacted on 13 22 29. The Maternal and Child Health central administration number for all Greater Shepparton is 03 5832 9312. Contact this number for all Maternal and Child Health matters including appointments.

📍 90 Welsford Street, Shepparton (Central)  
☎ 03 5832 9312



#### **Arthur Dickmann MCH Service**

📍 104 - 106 Maude St  
Shepparton, 3630

#### **Balaclava Road MCH Service**

📍 205 Balaclava Road  
Shepparton, 3630

#### **Dookie MCH Service**

📍 Mary Street  
Dookie, 3646

#### **Frank R Pullar MCH Service**

📍 168 Echuca Road  
Mooroopna, 3629

#### **Katandra West MCH Service**

📍 Bankin Street  
Katandra West, 3634

#### **Kialla Park MCH Service**

📍 18 Reserve Street  
Kialla, 3631

#### **Merrigum MCH Service**

📍 Waverley Avenue  
Merrigum, 3618

#### **Mooroopna Children's and Family Centre MCH Service**

📍 16-18 O'Brien Street  
Mooroopna, 3629

#### **Murchison MCH Service**

📍 38 Impey St  
Murchison, 3610

#### **Nth Hub MCH Service**

📍 10-14 Parkside Drive  
Shepparton, 3630

#### **Rumbalara MCH Service**

📍 Rumbalara Road  
Mooroopna, 3629

#### **Riverside Plaza MCH Service**

📍 Shop 21C, 8025 GV Highway  
Kialla, 3631

#### **Toolamba MCH Service**

📍 69-77 Wren St  
Toolamba, 3614

#### **Tatura MCH Service**

📍 12-16 Casey Street  
Tatura, 3616

#### **Westmorland Crescent MCH Service**

📍 13-15 Westmorland Crescent  
Shepparton, 3630



# NEIGHBOURHOOD/ COMMUNITY HOUSES

## **Neighbourhood/Community Houses**

Neighbourhood/Community Houses offer a range of services and programs to meet the needs of the local community. The houses are set in a welcoming and informal environment where adults and children can participate in a range of programs and activities. A more extensive list is available at [greatershepparton.com.au](http://greatershepparton.com.au).

- Parenting sessions
- Life skills sessions
- Relaxation and exercise programs
- Support groups
- Computer courses
- Art and craft activities for children and adults
- Occasional Child Care
- Referrals

Contact the individual houses/centres for more information and the services and programs on offer.

---

### **Murchison and District Neighbourhood House**

📍 38 Impey St Murchison, 3610  
☎ 03 5826 2373

---

### **Mooroopna Education and Learning Centre**

📍 23 Alexandra Street Mooroopna, 3629  
☎ 03 5825 1774

---

### **North Shepparton Community and Learning Centre**

📍 14 Parkside Drive Shepparton, 3630  
☎ 03 5821 5770

---

### **South Shepparton Community Centre**

📍 11 Service St Shepparton, 3630  
☎ 5821 6172

---

### **Tatura Community House**

📍 12-16 Casey street Tatura, 3616  
☎ 03 5824 1315



# PLAYGROUPS

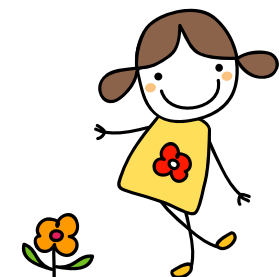
## Playgroups

Playgroups provide an opportunity for you and your child to meet and socialise with others and promote friendships, support, independence and learning. Playgroups usually offer a range of activities that you and your child can participate in including:

- Creative music
- Music and imaginative play
- Reading and other literacy play
- Craft activities

For more information on playgroups available in the local area or starting up a playgroup contact the Early Years Department on 03 5832 9783 or Playgroup Victoria on 03 9388 1599 or 1800 171 882.

For a full list of the Playgroups that are available in Greater Shepparton, please visit [www.greatershepparton.com.au](http://www.greatershepparton.com.au)







# KINDERGARTEN AND PRE-KINDERGARTEN SERVICES

Kindergarten allows your child to participate in a variety of activities that reflect their interests and skills, extend their knowledge of themselves and others, and help them to understand their environment. Kindergarten programs are delivered by qualified kindergarten teachers and are designed to increase a child's independence and develop a positive self-worth through furthering the social, emotional, cognitive, physical and language skills of children.

The Greater Shepparton City Council operates a central registration system for kindergartens in the municipality. Your child is eligible to attend a funded program if they turn four years of age before 30 April in the year of attendance. Parents with children under this age can often access additional services offered by the kindergarten such as Pre-kinder. Children with additional needs can attend kindergartens. Their attendance is supported by kindergarten field officers and other specialist support.

More information on kindergarten enrolments can be obtained by contacting the Council's Early Years Services department on 03 5832 9783.

## Funded Year Before School Kindergarten Programs

The Victorian Government funds a range of services to provide a kindergarten program to support learning in the early years. This is a fun year when children learn through play based programs that are developed to meet their individual needs.

### Apple Blossoms Early Learning

📍 21 Anne St  
Mooroopna, 3629  
☎ 03 5825 3933

### Arthur Dickmann Kindergarten

📍 104 Maude Street  
Shepparton, 3630  
☎ 03 5821 3880

### Arthur Mawson Kindergarten

📍 120 St Georges Road  
Shepparton, 3630  
☎ 03 5821 5110

### Balaclava Road Children's Centre

📍 205 Balaclava Road  
Shepparton, 3630  
☎ 03 5821 0396

### Colliver Road Kindergarten

📍 21 Colliver Rd  
Shepparton, 3630

☎ 03 5821 5779

### Community Kids Early Education Centre

📍 122 Graham St  
Shepparton, 3630  
☎ 1800 411 604

### Dolena Young Kindergarten

📍 135 Balaclava Road  
Shepparton, 3630  
☎ 03 5821 3908

### Dookie Kindergarten

📍 Mary Street  
Dookie, 3646  
☎ 03 5828 6377

### Echuca Road Kindergarten

📍 160 Echuca Road  
Mooroopna, 3629  
☎ 03 5825 2698

**Frank R Pullar Kindergarten**

📍 Echuca Road  
Mooroopna, 3629  
☎ 03 5832 5190

**Good Start Early Learning**

📍 49-51 Bouchier Street  
Shepparton, 3630  
☎ 03 5831 6465

**Good Start Early Learning**

📍 132-314 Archer Street  
Shepparton, 3630  
☎ 03 5822 2830

**Gowrie Park Preschool**

📍 35 Hughes Street  
Tatura, 3616  
☎ 03 5824 1602

**Gowrie St Preschool**

📍 1-19 Gowrie Street  
Shepparton, 3630  
☎ 03 5821 9185

**Guthrie St Childcare**

📍 52-54 Guthrie Street  
Shepparton, 3630  
☎ 03 5821 1711

**Inspira Kids Early Learning Centre**

📍 24 Riverview Road  
Kialla, 3631  
☎ 03 5897 7167

**Isabel Pearce Kindergarten**

📍 506 Central Avenue  
Shepparton East, 3631  
☎ 03 5829 2369

**Katandra West Kindergarten**

📍 33 Bankin Street  
Katandra West, 3634  
☎ 03 5828 3254

**Kialla Children's Centre**

📍 18 Reserve Street  
Kialla, 3631  
☎ 03 5823 2746

**Knight Street Multi-Age Learning**

📍 164 Knight Street  
Shepparton, 3630  
☎ 03 5831 8911

**Leslie Gribble Kindergarten**

📍 13 Westmorland Crescent  
Shepparton, 3630  
☎ 03 5821 3980

**Little Stars Florina Child Care and Kindergarten**

📍 Crn Hawdon and Knight Street  
Shepparton, 3630  
☎ 03 5821 7805

**Lulla's Children's & Family Centre**

📍 42 Harold Street  
Shepparton, 3630  
☎ 03 4800 5295

**Merrigum Preschool**

📍 145 Waverly Avenue  
Merrigum, 3618  
☎ 03 5855 2467

**Mooroopna Primary School and Children's & Families Centre**

📍 16-18 O'Brien Street  
Mooroopna, 3929

**Murchison Preschool**

📍 14 Watson Street  
Murchison, 3610  
☎ 03 5826 2485

**Nancy Vibert Kindergarten**

📍 18 Edward Street  
Shepparton, 3630  
☎ 03 5832 9560

**Nido Early School**

📍 2-10 St Georges Road  
Shepparton, 3630  
☎ 03 5849 1655

**Patricia Smith Kindergarten**

📍 38 Packham Street  
Shepparton, 3630  
☎ 03 5821 6672

**Rodney Neighbourhood Steiner Kindergarten**

📍 5 Echuca Road  
Mooroopna, 3629  
☎ 03 5825 1200

**Save the Children Kindergarten**

📍 17 O'Brien St  
Mooroopna, 3629  
☎ 03 5825 2924

**St Mel's Kindergarten**

📍 201 Archer Street  
Shepparton, 3630  
☎ 03 5821 9982

**Tallygaroopna Kindergarten**

📍 33 Victoria St  
Tallygaroopna, 3634  
☎ 03 5829 8274

**Tatura Children's Centre**

📍 5-9 Kerford Street  
Tatura, 3616  
☎ 03 5824 1415

**Toolamba Kindergarten**

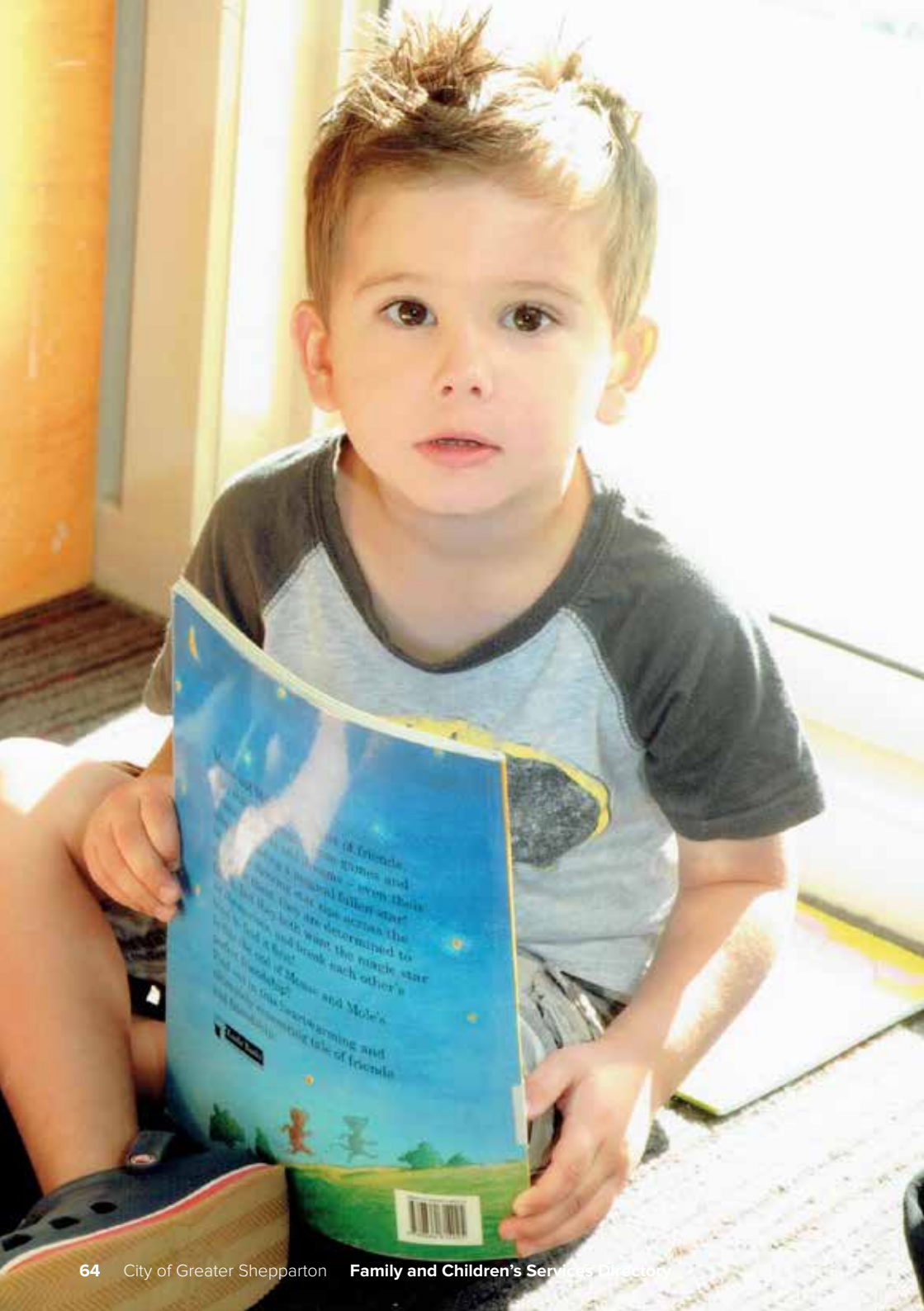
📍 Wren St  
Toolamba, 3614  
☎ 03 5826 5320

**Undera Kindergarten**

📍 45 Anderson Street  
Undera, 3629  
☎ 03 5826 0252

**Wyndham Early Learning**

📍 617 Wyndham Street  
Shepparton, 3630  
☎ 03 5822 2372



### Pre-Kindergarten

#### Arthur Dickmann Pre-kindergarten

📍 104 Maude Street  
Shepparton, 3630  
☎ 03 5821 8300

#### Arthur Mawson Pre-kindergarten

📍 St Andrews St  
Shepparton, 3630  
☎ 03 5821 2110

#### Colliver Rd Pre-kindergarten

📍 21 Colliver Road  
Shepparton, 3630  
☎ 03 5821 5779

#### Dookie Pre-kindergarten

📍 Mary Street  
Dookie, 3646  
☎ 03 5828 6377

#### Echuca Road Pre-kindergarten

📍 160 Echuca Road  
Mooroopna, 3629  
☎ 03 5825 2698

#### Frank R Pullar Pre-kindergarten

📍 168 Echuca Road  
Mooroopna, 3629  
☎ 03 5832 5190

#### Good Start Early Learning

📍 Bouchier Street  
Shepparton, 3630  
☎ 03 5831 6465

#### Good Start Early Learning

📍 Archer Street  
Shepparton, 3630  
☎ 03 5822 2830

#### Gowrie Park Pre-kindergarten

📍 35 Hughes Street  
Tatura, 3616  
☎ 03 5824 1602

#### Gowrie Park Pre-kindergarten

📍 1-19 Gowrie Street  
Shepparton, 3630  
☎ 03 5821 9185

#### Isabel Pearce Pre-kindergarten

📍 506 Central Avenue  
Shepparton East, 3631  
☎ 03 5829 2369

#### Katandra West Pre-kindergarten

📍 Bankin Street  
Katandra West, 3634  
☎ 03 5828 3254

#### Kialla Children's Centre Pre-kindergarten

📍 18 Reserve Street  
Kialla, 3631  
☎ 03 5823 2746

#### Leslie Gribble Pre-kindergarten

📍 13 Westmorland Cres  
Shepparton, 3630  
Ph: 03 5821 3980

#### Patricia Smith Pre-kindergarten

📍 38 Packham Street  
Shepparton, 3630  
☎ 03 5821 6672

#### Rodney Neighbourhood Pre-kindergarten

📍 5 Echuca Road  
Mooroopna, 3631  
☎ 03 5825 1200

#### St Mels Pre-kindergarten

📍 35 Hamilton Street  
Shepparton, 3630  
☎ 03 5821 3163

#### Tallygaroopna Pre-kindergarten

📍 33 Victoria Street  
Tallygaroopna, 3634  
☎ 03 5829 8274





# PRIMARY SCHOOLS

## Primary Schools

For a child to attend primary school they must have turned five years of age by 30 April of the year that they will be attending school. Local primary schools endeavour to support parents in a wide range of areas and are a valuable contact point for information about local services.

### Victorian Government Schools:

#### Ardmona Primary School

📍 580 Turnbull Road  
Ardmona, 3629  
☎ 03 5829 0273

#### Bourchier Street Primary School

📍 Bourchier Street  
Shepparton, 3630  
☎ 03 5821 3488

#### Congupna Primary School

📍 3580 Katamatite/Shepparton  
Main Road Congupna, 3633  
☎ 03 5829 9286

#### Currawa Primary School

📍 Dookie College Campus  
Dookie, 3646  
☎ 03 5828 6581

#### Dhurringile Primary School

📍 605 Langham Road  
Dhurringile, 3610  
☎ 03 5826 6222

#### Dookie Primary School

📍 Baldock Street  
Dookie, 3646  
☎ 03 5828 6585

#### Gowrie Street Primary School

📍 1-19 Gowrie Street  
Shepparton, 3630  
☎ 03 5821 3100

#### Grahamvale Primary School

📍 85 Grahamvale Primary School  
Grahamvale, 3631  
☎ 03 5821 4219

#### Guthrie Street Primary School

📍 33 Guthrie Street  
Shepparton, 3630  
☎ 03 5821 1944

#### Harston Primary School

📍 155 Harston Road  
Harston, 3616  
☎ 03 5854 8317

#### Katandra West Primary School

📍 17-27 Bankin Street  
Katandra West, 3634  
☎ 03 5828 3350

#### Kialla Central Primary School

📍 128 Central Road  
Kialla, 3631  
☎ 03 5827 1373

#### Kialla West Primary School

📍 7370 Goulburn Valley Highway  
Kialla West, 3631  
☎ 03 5823 1333

#### Lemnos Primary School

📍 Lemnos Road  
Lemnos, 3631  
☎ 03 5829 9287

**Merrigum Primary School**

📍 14 Judd Avenue  
Merrigum, 3618  
☎ 03 5855 2275

**Mooroopna North Primary School**

📍 835 Ardmona Road  
Mooroopna, 3629  
☎ 03 5829 0141

**Mooroopna Park Primary School**

📍 45 MacIassac Road  
Mooroopna, 3629  
☎ 03 5825 3856

**Mooroopna Primary School**

📍 16-18 O'Brien Street  
Mooroopna, 3629  
☎ 03 5825 2060

**Murchison Primary School**

📍 8-10 Impey Street  
Murchison, 3610  
☎ 03 5826 2391

**Orrvale Primary School**

📍 300 Channel Road  
Orrvale, 3631  
☎ 03 5829 2490

**Shepparton East Primary School**

📍 15 School Road  
Shepparton East, 3631  
☎ 03 5829 2426

**St Georges Road Primary School**

📍 120 St Georges Road  
Shepparton, 3630  
☎ 03 5821 3383

**Tallygaroopna Primary School**

📍 24-34 Victoria Street  
Tallygaroopna, 3634  
☎ 03 5829 8264

**Tatura Primary School**

📍 Cnr Servive and Albert Street  
Tatura, 3616  
☎ 03 5824 1684

**Toolamba Primary School**

📍 69-77 Wren Stret  
Toolamba, 3614  
☎ 03 5826 5212

**Undera Primary School**

📍 45-55 Anderson Street  
Undera, 3629  
☎ 03 5826 0211

**Wilmot Road Primary School**

📍 84-90 Wilmot Road  
Shepparton, 3630  
☎ 03 5821 4953

**Zeerust Primary School**

📍 245 Zeerust Road  
Zeerust, 3634  
☎ 03 5829 8282

**Independent Schools****Isik College**

📍 685 New Dookie Road  
Shepparton, 3630  
☎ 03 5829 9852

**Shepparton Christian Community School**

📍 155 Verney Road  
Shepparton, 3630  
☎ 03 5831 7790

**Catholic Schools****Sacred Heart Primary School**

📍 69 Hogan Street  
Tatura, 3616  
☎ 03 5824 1841

**St Anne's College**

📍 72 Wendouree Dr  
Kialla, 3631  
☎ 03 4812 2993

**St Brendan's Primary School**

📍 143-149 Knight Street  
Shepparton, 3630  
☎ 03 5821 1926

**St Luke's Catholic Primary School**

📍 Cnr GV Highway & Grace Road  
Shepparton, 3630  
☎ 03 5822 1834

**St Mary's Primary School**

📍 121-143 McLennon Street  
Mooroopna, 3629  
☎ 03 5825 2858

**St Mel's Primary School**

📍 35 Hamilton Street  
Shepparton, 3630  
☎ 03 5821 3163











GREATER  
SHEPPARTON



# AMENDMENT TO DIRECTORY

## **Updating your information**

The content of the City of Greater Shepparton Family and Children's Services Directory was correct at the time of printing. The Council's Early Years Services team have made every effort to provide correct information and contact details.

If you find any contact details have changes, please let us know by sending us the correct details to update the information for the next publicaion.

## **Please send revised information to:**

Greater Shepparton City Council  
Early Years Services  
90 Welsford Street  
Ph: (03) 5832 9783  
Email: [council@shepparton.vic.gov.au](mailto:council@shepparton.vic.gov.au)  
**[www.greatershepparton.com.au](http://www.greatershepparton.com.au)**

November 2021