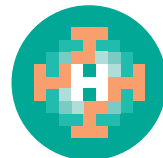


Dental Services



GOULBURN VALLEY
HEALTH

Dental Service

(03) 5832 3050

Hours:
8:30am to 5pm, Monday to Friday,
excluding public holidays

If you wish to use an alternative public dental service,
please phone 1300 360 054 to locate your nearest clinic.

GV Health is a smoke free environment
For more information about services provided by GV Health,
visit www.gvhealth.org.au

GV Health publication: Dental Service GVH0200
Produced by the GV Dental Service
For review: February 2016



GOULBURN VALLEY
HEALTH

Dental Services

About the Goulburn Valley Dental Service

The 12-chair dental clinic provides care to all ages, with room for carers to attend appointments with the patient. The modern clinic has the latest equipment and implements rigorous infection control techniques. The dental laboratory provides efficient prosthetic (denture) services.

The range of programs provided includes:

- Community Dental Program (including prosthetic services)
- Child and family dentistry
- Early childhood oral health
- School dental service
- Youth dental program
- Oral health promotion
- Student teaching clinics

Shepparton's public dental service combines local public dental programs and teaching of dental science students.

Services and costs

Community Dental Program

The Community Dental Program provides emergency, general dental care and denture services to concession card holders and their dependants.

The fee depends on the type and amount of care you need. Check with the receptionist about fees when making a booking.

Early Childhood Oral Health program

The Early Childhood Oral Health Program provides emergency and regular dental care for all children aged 0 to 6 years of age and focuses on preventing disease.

School Dental Service

The School Dental Service provides emergency and regular dental care for all primary school students. Care is offered every 24 months and sometimes sooner, depending on the treatment needs of the child.

For concession care holders and their dependents, there is no fee for emergency and general care.

For non-card holders, check with the receptionist about fees when making a booking.

GV Health provides the School Dental Service in the City of Greater Shepparton and parts of the Shires of Moira and Strathbogie.

Youth Dental Program

The Youth Dental program provides emergency and regular dental care for concession card holders and their dependents in years 7 to 12, and school leavers less than 18 years of age.

There is no fee for this service.

Student Teaching

All programs have student teaching clinics. If you are assessed as suitable and provide consent, treatment will be provided by a supervised dental student.

There is no fee for treatment by students.

Please note: all fees are subject to change, in keeping with statewide policy.

How long will I have to wait?

In the Community Dental Program, your treatment needs will determine how long you will be on the waiting list for general dental or denture care.

The Youth Dental Program, School Dental Service and Early Childhood Oral Health Programs do not have waiting lists. Patients are offered the next available appointment for the first visit. Repeat appointments will be scheduled according to your treatment needs.

Where is the dental service located?

The Goulburn Valley Dental Service is at the Goulburn Valley Health Graham Street campus in Shepparton. Enter through the main entry and take the lift or stairs to the first floor.

How do I make an appointment?

Each of the programs offers emergency dental care for their patients during business hours. Please call (03) 5832 3050.

For after-hours emergencies, please contact the GV Health Emergency Department on (03) 5832 2322 or contact the Royal Melbourne Dental Hospital on toll free 1800 833 039.

For those who are eligible and wish to access general dental or denture services, phone (03) 5832 3050.