

ATTACHMENT TO AGENDA ITEM

Ordinary Meeting

17 March 2015

Agenda Item 6.2 Kialla Park Recreation Reserve Master Plan

Attachment 1 Draft Kialla Park Recreation Reserve Master Plan..... 76



Disclaimer

The information contained in this report is intended for the specific use of the within named party to which it is addressed ("the communityvibe client") only. All recommendations by communityvibe are based on information provided by or on behalf of the communityvibe client and communityvibe has relied on such information being correct at the time this report is prepared. communityvibe shall take no responsibility for any loss or damage caused to the communityvibe client or to any third party whether direct or consequential as a result of or in any way arising from any unauthorised use of this report or any recommendations contained within.

Report Date: November 2014 v6

communityvibe

Wendy Holland

5 Allison St, BENDIGO VIC 3550.

Ph: 0438 433 555.

E: wendy@communityvibe.com.au

W: www.communityvibe.com.au

Prepared By



Brendan Bartlett
landscape architecture and design

Acknowledgements

The following individuals and organisations were instrumental in the preparation of this Master Plan:

Name	Organisation
Mel Sporry	Greater Shepparton City Council
Brendan Gosstray	Greater Shepparton City Council
Stacey Cole	Greater Shepparton City Council
Sarah Jennings	Greater Shepparton City Council
Kelli Halden	Greater Shepparton City Council
Julieanne Jashar	Greater Shepparton City Council
Heath Chasemore	Greater Shepparton City Council
Tim Zak	Greater Shepparton City Council
Bobbi-Lea Bright	Greater Shepparton City Council
Kate Montgomery	Greater Shepparton City Council
Anthony Nicolaci	Greater Shepparton City Council
Andrew Farrell	Greater Shepparton City Council
Ian Boyle	Greater Shepparton City Council
John Gribben	Greater Shepparton City Council
Brayden Aitken	Greater Shepparton City Council
Kate Montgomery	Greater Shepparton City Council
Michelle Patterson	Greater Shepparton City Council
Darren Buchanan	Greater Shepparton City Council
Stephen Damon	Greater Shepparton City Council
Kevin Jones	Greater Shepparton City Council
Karen Dexter	Greater Shepparton City Council
Graeme Pollard	Greater Shepparton City Council
Belinda Collins	Greater Shepparton City Council
Rosemary Pellegrino	Greater Shepparton City Council
Carla Ralph	Kialla Sports Club Inc.
Stan Hester	Shepparton Park Bowls Club
Jim Shanahan	Shepparton Park Bowls Club
Alan Sutherland	Shepparton Park Bowls Club
Craig Brauman	Kialla Park Tennis
Michael Dwyer	Kialla Knights Cricket Club
Patricia Garraway	Kialla Park Children's Centre
Tara Jeffrey	Kialla Park Children's Centre
Tish Okely	Kialla Scouts
David Brown	Kialla Scouts
Matt Oakley	Kialla Scouts
David Delia	Cricket Shepparton
Martin Gleeson	AFL Goulburn Murray
Mark Lambourn	AFL Goulburn Murray
Bree Boyle	AFL Goulburn Murray
Kate Nichols	SPSSA – Shepparton Primary Schools Sports Association
Valdi Zalitsas	GMDSSA – Goulburn Murray District School Sports Association

Name	Organisation
John Cortese	Notre Dame Football Club
Rob McCartney	Guthrie St PS Football Club
Frank Trimboli	Goulburn North East Football Ass (Soccer)
Mellisa Silaga	Shepparton Rugby Union Club
Murray Shields	Mooroopna Kiwanis

Many members of the local community also contributed to the Master Plan by completing a community survey or attending the Come and Try Event held at Kialla Park.



Figure 1: Undercover bowls area

Table of Contents

1.0 Executive Summary.....	1
2.0 Introduction	2
2.1 Methodology.....	3
3.0 Community Engagement	4
3.1 Overview	4
4.0 Vision and Planning Principles	5
4.1 Vision.....	5
4.2 Planning Principles	5
5.0 Action Plan	6
6.0 Proposed Site Plans.....	19
7.0 Policy Context	23
8.0 Participation in Sport and Recreation	28
9.0 Demographic Summary.....	29
10.0 Benefits of Sport and Recreation	32
11.0 Trends in Sport and Recreation	34
11.1 General Trends.....	34
12.0 Community Needs Summary	36
13.0 Facilities and Infrastructure Audit and Needs Analysis	40
13.1 Oval Number One	40
13.2 Oval Number Two	43
13.3 Kialla Park Community Centre	44
13.4 Cricket Practice Nets	45
13.5 Tennis Courts	46
13.6 Bowls Pavilion	48
13.7 Undercover Bowls Facility	48
13.8 Outdoor Bowling Rinks	49
13.9 Play Space	50
13.10 Kialla Children’s Centre	51
13.11 Scout Hall	51
13.12 Toilet Block.....	52
13.13 Car Parks	53
13.14 Entrances and Internal and External Roadways	55

13.15 Pedestrian and Cycle Access 57

13.16 Public Transport 58

13.17 Signage 58

13.18 Landscaping 60

13.19 BBQs / Picnic Areas 61

13.20 Electrical Supply 61

13.21 Water Supply and Drainage 62

13.22 Storage 63

14.0 Management and Maintenance 65

14.1 Management 65

 14.1.1 Community Centre 65

 14.1.2 Management Organisations 65

 14.1.3 Strategic Direction 66

14.2 Maintenance Roles and Responsibilities 67



Figure 2: 'The Ashes' trophy at Shepparton Park Bowls Club

1.0 Executive Summary

For over thirty-years, Kialla Park Recreation Reserve has provided an array of sport, recreation, social and early years learning opportunities for nearby residents. These local residents enjoy the proximity of the reserve to their homes and like the family atmosphere created at Kialla Park. They feel that it's a clean, quiet and safe reserve, with low levels of traffic. They enjoy the wide open space and the range of quality activities and services on offer. Many people feel that in addition to the formal sports on offer, that it's also a great place for informal activity, for example - to walk a dog.

Kialla Park has seen some very positive developments in recent years. The Greater Shepparton City Council, in partnership with the Shepparton Park Bowls Club, for example, has managed to secure funds to develop high quality outdoor and undercover facilities which have attracted state and national level events. Kialla Park Children's Centre has also continued to expand, in line with population growth in the southern corridor, and the number of juniors taking part in tennis lessons has increased significantly. The arrival of AFL Goulburn Murray on site has also helped to create increased activity at the centre and promises to reinvigorate football at the site. Other activities such as cricket and scouts continue to provide valuable sport and recreational activities to local residents.

The undeveloped area of open space in the western part of the reserve lends itself very well to more informal recreational pursuits, with the opportunity to become a key active transportation link between central Shepparton and the southern suburbs via walking / cycling pathways.

This master plan therefore aims to identify the works, both from a managerial perspective and an infrastructure perspective, to ensure that Kialla Park Recreation Reserve will achieve its vision of providing a range of quality and accessible physical activity and social opportunities to promote health, wellbeing and community engagement.

Some of the possible items identified that could be undertaken (as a result of information obtained through community consultation, audits and key stakeholder interviews) to achieve the vision are works, improvements or upgrades to:

- Oval Number One
- Oval Number Two
- Tennis
- Bowls
- Community Centre
- Playground
- Pedestrian and cycle access
- Roadway
- Parking
- BBQ / picnic area
- Landscaping
- Open space
- Public toilets
- Public transport
- Signage
- Storage
- Management

2.0 Introduction

Kialla Park Recreation Reserve is located in Greater Shepparton's southern growth corridor on land bound by the Goulburn Valley Highway (south of the Shepparton CBD) to the east and Raftery Road to the south. The northern and western boundaries adjoin privately owned land. Kialla Park Recreation Reserve is owned by Greater Shepparton City Council. The 13.35 hectare site was purchased by Greater Shepparton City Council in 1977 and a Recreation Reserve Management Committee was formed in 1982. The site is zoned Public Park and Recreation.

Kialla Park is classified by Greater Shepparton City Council as a local / regional sports precinct.

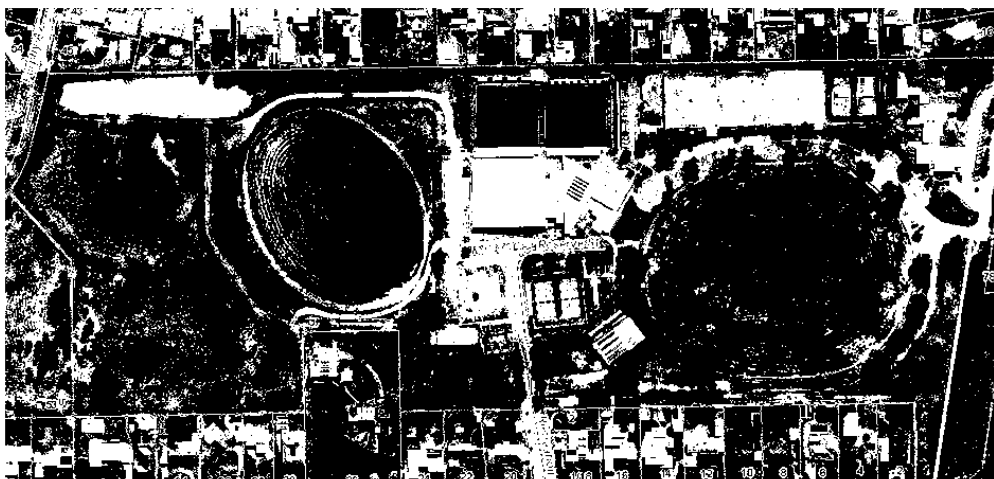


Figure 3: Site plan of Kialla Park Recreation Reserve

Facilities at Kialla Park include:

- 1 bowls pavilion with offices, cafe, bar, full commercial kitchen, function space, toilets
- 1 children's services centre with program rooms, offices and play facilities
- 1 community centre with offices, change facilities, kitchen and function space
- 4 cricket practice nets
- 4 hard court tennis courts
- 1 junior sports oval with a synthetic wicket
- 7 lawn bowls rinks with lights and shelter
- Parking and internal roads
- 1 playground
- 1 Scout hall
- 1 senior sports oval with a turf wicket and two lighting towers (with training level lights)
- Several BBQs and picnic tables
- 1 storage dam
- 6 synthetic grass tennis courts with lights and shelters
- 8 synthetic indoor bowling rinks (covered).

Current user groups based at Kialla Park are:

- Kialla Park Children's Centre
- Kialla Park Tennis Club
- Kialla Knights Cricket Club
- Dookie Cricket Club
- Shepparton Park Bowls Club
- Kialla Park Scouts Group
- AFL Goulburn Murray (office accommodation)
- Shepparton Notre Dame Junior Football Club
- Kialla West Primary School Football Club
- Guthrie Street Primary School Football Club
- Guthrie Street Primary School Soccer Club
- Shepparton and District Junior Football League
- GMDSSV (secondary schools).

Kialla Park is also used informally by people walking their dogs, visiting the play space, having a BBQ or picnic, having a kick of a football, etc. Personal trainers also use the site for outdoor group exercise classes on a casual basis.

A master plan was developed for Kialla Park in 2004.

2.1 Methodology

The process used to obtain the necessary information on which to base recommendations contained within this Master Plan is as follows:

- Review of relevant literature and reports
- Demographic analysis
- Analysis of local and state sport and recreation participation statistics
- Review of current state and national leisure trends and their impact on sport and recreation programs, services and facilities
- Meetings with user groups of the Reserve
- User group survey
- Community survey
- Feedback from community members at the Come and Try Event
- Interviews with key stakeholders
- Written and verbal submissions
- Site inspection of the grounds and buildings
- Examination of potential funding options
- Analysis of community needs and preparation of a series of prioritised recommendations.

3.0 Community Engagement

3.1 Overview

Community needs were identified through a range of different mechanisms including:

- **User Surveys** – surveys were emailed out to all user groups of the Reserve. **Nine** surveys were completed.
- **Key Stakeholder Interviews** – interviews were held with **46** users of the Reserve, Greater Shepparton City Council staff and other key stakeholders during February and April 2014.
- **Community Survey** – a community survey was letter box dropped to homes immediately surrounding Kialla Park Recreation Reserve in January 2014. It was also forwarded to residents living in the Seven Creeks area, and promoted via Council’s website, the local media and via school newsletters. A total of **81** surveys were returned.
- **Community Come and Try Day** – a Community Come and Try Day was held onsite on Friday 7 February 2014. Representatives from Committees of the various activities located at the Reserve were in attendance. Despite extreme heat (42 degrees Celsius), **11** participants attended and spoke with the project team – three females and eight males, most of whom were around 70 years of age.
- **Literature Review** – analysis of nine (**9**) previous studies and policies
- **Verbal Submissions** – although not expressly called for, **one** community member telephoned Greater Shepparton City Council staff to discuss some ideas for future development at Kialla Park Recreation Reserve.
- **Written Submissions** – written submissions were received from **three** user groups of the site.



Figure 4: Car parking in front of Community Centre

4.0 Vision and Planning Principles

A vision and planning principles have been developed to help guide future developments at Kialla Park.

4.1 Vision

Kialla Park Recreation Reserve provides a range of quality and accessible physical activity and social opportunities to promote health, wellbeing and community engagement.

4.2 Planning Principles

The planning principles developed as part of this Master Plan reflect those developed for a range of other Greater Shepparton City Council related reports. These principles are as follows:

Planning Principle	Wherever possible, Kialla Park Recreation Reserve will support and encourage an initiative that:
Accessibility	Encourages accessibility for people of all abilities, both genders, and people of all cultural backgrounds.
Growth and change	Recognises community growth and change by allowing sufficient multi-purpose spaces to cater for future facilities and activities (both informal and formal).
Quality	Improves the quality of sport and recreation opportunities and the standard of infrastructure on site.
Community need	Identifies and responds to demonstrated community needs which have been expressed through appropriate levels of planning.
Health and wellbeing	Promotes health and wellbeing of local residents and users of Kialla Park Recreation Reserve.
Community engagement	Provides opportunities for community members to interact and engage with each other.
Economic benefits	Promotes economic benefits and ongoing financial sustainability to existing clubs and associations.
Partnerships	Promotes the development of appropriate partnerships with community groups, government agencies and the private sector.
Diversity and equity	Encourages a diverse and equitable range of leisure opportunities and ensures that initiatives complement each other rather than duplicate what already exists.
Natural Environment	Ensures preservation and enhancement of the natural environment within the Reserve.

5.0 Action Plan

Recommendations have been identified for Kialla Park Recreation Reserve based on needs identified by user groups and other potential users of the site via:

- user group surveys
- interviews with key stakeholders
- community surveys
- feedback from participants at the Come and Try Day
- literature reviews
- site inspections.

Developments have been included if the proposed works:

1. are consistent with the vision and planning principles developed for the Reserve.
2. have been demonstrated through a number of sources such as Greater Shepparton City Council Plan, Greater Shepparton's 2030 Plan, community plans, community consultations, surveys, etc, as needed by the community.
3. are consistent with the grading of the reserve and the type of infrastructure and facilities expected within the grading, i.e. a local level recreation ground.
4. will help to maintain and / or increase participation in sport and recreation opportunities.
5. are likely to benefit the broader community (from a social, physical, economic and / or environmental perspective) and involve the community in operations or management.
6. create improved access for people of all abilities, ages, genders, etc.
7. increase the opportunity for the site to be used for a variety of different and / or new activities.
8. are likely to increase safety of users and reduce risk management issues.
9. are likely to allow the site to meet industry standards, regulations and legislation.
10. reflect best practice and current industry trends.
11. are likely to decrease the impact on the environment and natural resources.
12. are likely to be financially sustainable in the long term and take into consideration whole of life funding costs, including development of replacement schedules.

13. are likely to decrease operational costs.
14. are likely to reduce the demands on volunteers' time (for activities such as mowing, watering, etc).
15. will rectify existing infrastructure that is currently in a very poor state or beyond repair.
16. are likely to attract external funding.
17. are within the resource capacity of the community to achieve, i.e. plans are cost effective, user groups have sufficient resources to make the required financial contribution, user groups can provide some in-kind labour, user groups can assist with project management, suitable plans have been developed, etc.
18. enhance the appearance and usability of the site, e.g. improved landscaping, marked car parking bays, etc.
19. involve a number of partners to assist with funding and / or operations, management and maintenance.
20. do not duplicate existing facilities.

Proposed timeframes are as follows:

High: 1-3 years

Medium: 3-10 years

Low: 10+ years

Note that many of the proposed works are conditional upon receiving external grants and local funding contributions. All of the indicative costings are based on commercial rates and are current costs, however could be reduced significantly through the use of in-kind materials or labour, where it is possible and legal to do so. Most of the larger items of work will need to be put out to commercial tender. Prices will vary according to the materials used and the actual size of certain developments.

	Facility / Issue	Works	Responsibility / Potential Partners	Priority	Key Planning Principles Relationship	Indicative Costing (Ex GST)
1	Management (1)	Greater Shepparton City Council to establish a user group comprised of community and Council to meet several times each year to discuss common issues at Kialla Park, e.g. facility development, parking, security, etc. This group will support the implementation and	<ul style="list-style-type: none"> • Greater Shepparton City Council • Kialla Knights Cricket Club • AFL Goulburn Murray 	High	<ul style="list-style-type: none"> • Partnerships 	<ul style="list-style-type: none"> • No cost.

Page | 7

Facility / Issue	Works	Responsibility / Potential Partners	Priority	Key Planning Principles Relationship	Indicative Costing (Ex GST)	
	evaluation of the master plan.	<ul style="list-style-type: none"> • Kialla Park Tennis Club • Shepparton Park Bowls Club • Kialla Scout Group • Kialla Park Children's Centre • Dookie Cricket Club 				
2	Management (2)	In the short term, Greater Shepparton City Council should continue to work with AFL to ensure that Kialla Park is a suitable location for the AFL Goulburn Murray offices. In the long term GSCC should have discussions with AFL to determine the strategic directions of AFL in the region. Greater Shepparton City Council should also undertake a study (separate to this master plan) to determine the feasibility of establishing an artificial grass oval and associated infrastructure at Shepparton Sports Precinct or other location.	<ul style="list-style-type: none"> • Greater Shepparton City Council • AFL Goulburn Murray • AFL Victoria • Victorian Government's Country Football Netball Program 	High	<ul style="list-style-type: none"> • Growth and change • Quality • Community need • Health and wellbeing • Economic benefits • Partnerships 	<ul style="list-style-type: none"> • Feasibility study could cost \$20,000 to \$30,000
3	Oval #1	Upgrade playing surface and increase usability of oval number one by: <ul style="list-style-type: none"> • Improving drainage • Installing a new irrigation system • Replanting with warm season 	<ul style="list-style-type: none"> • Greater Shepparton City Council • Kialla Knights Cricket Club • AFL Goulburn 	High	<ul style="list-style-type: none"> • Growth and change • Quality • Community need 	<ul style="list-style-type: none"> • Earth works / drainage: \$30,000 • Irrigation system: \$100,000

Facility / Issue	Works	Responsibility / Potential Partners	Priority	Key Planning Principles Relationship	Indicative Costing (Ex GST)	
	<ul style="list-style-type: none"> (drought tolerant) grasses Installing a scoreboard Installing additional seating around the perimeter Installing training level lights with capacity to be converted to game level lights in the future if warranted. Extending its length and width 	<ul style="list-style-type: none"> Murray Victorian Government's Community Facilities Funding Program 		<ul style="list-style-type: none"> Health and wellbeing Economic benefits 	<ul style="list-style-type: none"> Turf: \$120,000 Scoreboard: \$10,000 Seating: \$8,000 Lights: \$200,000 	
4	Pedestrian and Cycle Access (1)	Develop a shared cycling / walking path that connects Furphy Ave to Seven Creeks via Kialla Park. This may require further investigation by Council in terms of land purchases or swaps.	<ul style="list-style-type: none"> Greater Shepparton City Council Victorian Government's Community Facilities Funding Program 	High	<ul style="list-style-type: none"> Accessibility Growth and change Quality Community need Health and wellbeing Diversity and equity 	<ul style="list-style-type: none"> \$30,000 - \$50,000 providing that direct connections can be established.
5	Signage	Undertake the following in regards to signage at Kialla Park Recreation Reserve: <ul style="list-style-type: none"> Using appropriate signage (a large welcome sign that details activities available and directional signage), promote the Raftery Road entrance as the main entrance to 	<ul style="list-style-type: none"> Greater Shepparton City Council 	High	<ul style="list-style-type: none"> Accessibility Quality 	<ul style="list-style-type: none"> \$15,000

Facility / Issue	Works	Responsibility / Potential Partners	Priority	Key Planning Principles Relationship	Indicative Costing (Ex GST)
		the Reserve. <ul style="list-style-type: none"> • Council to develop a municipal-wide sponsorship and signage policy which ensures consistency of branding. 			
6	Landscaping	Undertake the following landscaping works at Kialla Park Recreation Reserve: <ul style="list-style-type: none"> • Plant indigenous trees around the Reserve to provide shade for participants and spectators and to improve the visual amenity of the site. • Trees to be planted beside the ovals, along the proposed shared pathway and around the perimeter of the Reserve (particularly to provide a barrier between homes and the reserve along the northern and southern boundaries). • Garden beds near the community centre, the rear of the bowls facility and around the Childrens' Centre to be upgraded to ensure that they are visually attractive, yet low maintenance and require little watering. Landscaping must be maintained by the responsible 	<ul style="list-style-type: none"> • Greater Shepparton City Council • Local gardening / Landcare groups • Schools 	High	<ul style="list-style-type: none"> • Quality • Natural environment <ul style="list-style-type: none"> • \$20,000

Facility / Issue	Works	Responsibility / Potential Partners	Priority	Key Planning Principles Relationship	Indicative Costing (Ex GST)	
		body to improve the overall amenity and visual appeal of the reserve.				
7	Roadway	<p>Undertake the following road works at Kialla Park:</p> <ul style="list-style-type: none"> • Install traffic calming measures and speed restriction signs near the Kialla Park Children's Centre • Install additional lighting along access roads, particularly Recreation Drive (ensuring that lights will not negatively impact on neighbouring properties). • Install signage to guide users to relevant sections of the Reserve and promote Raftery Road as the main entrance. • Seal a roadway along the east side of oval number one, culminating in a turning circle in the south east corner of the reserve 	<ul style="list-style-type: none"> • Greater Shepparton City Council 	High	<ul style="list-style-type: none"> • Quality 	<ul style="list-style-type: none"> • \$50,000 - \$80,000
8	Parking (1)	<p>Make the following parking improvements at Kialla Park:</p> <ul style="list-style-type: none"> • Formalise parking along north and east side of oval number one – ensuring that no cars can park 	<ul style="list-style-type: none"> • Greater Shepparton City Council 	High	<ul style="list-style-type: none"> • Accessibility • Quality 	<ul style="list-style-type: none"> • \$60,000 - \$100,000

Facility / Issue	Works	Responsibility / Potential Partners	Priority	Key Planning Principles Relationship	Indicative Costing (Ex GST)	
	<p>under trees (use bollards to protect trees)</p> <ul style="list-style-type: none"> Decommission 17 car parks between the tennis courts and the bowls area to establish a picnic / BBQ area. Retain five car parking spaces next to the Community Centre for accessible parking, pavilion deliveries, staff parking during the week and emergency access. Increase the size of the turning circle. Install bike parking racks near the Community Centre Provide a break in the curb in the bowls and tennis car park to allow greater accessibility Provide a break in the curb in the bowls car park to allow the Scouts to drive their trailer up to their shed. 					
9	Bowls (1)	<p>Replace carpet on undercover bowls green and develop a capital replacement plan for replacement of the undercover carpet green surface.</p>	<ul style="list-style-type: none"> Shepparton Park Bowls Club 	High	<ul style="list-style-type: none"> Growth and change Community need Health and wellbeing Economic benefits 	<ul style="list-style-type: none"> Clay base: \$100,000 New carpet: \$200,000

Facility / Issue	Works	Responsibility / Potential Partners	Priority	Key Planning Principles Relationship	Indicative Costing (Ex GST)	
10	Tennis (1)	Extend the existing tennis shelter (double brick, span line roof with fans but no gable, concrete base, open sides, eave on north and south ends of building and some seating and a bench) and add additional storage to the other brick building. Maintain the tennis courts in the best condition possible until the surface is replaced within the next 3-5 years.	<ul style="list-style-type: none"> Greater Shepparton City Council Kialla Park Tennis Club 	High-Medium	<ul style="list-style-type: none"> Growth and change Health and wellbeing 	<ul style="list-style-type: none"> \$40,000
11	Bowls (2)	Upgrade bowls facilities: <ul style="list-style-type: none"> Install plastic curtains on south side of undercover bowls area Install a veranda on the northern side of this facility Provide additional shade around the lawn bowls greens. 	<ul style="list-style-type: none"> Shepparton Park Bowls Club 	High-Medium	<ul style="list-style-type: none"> Growth and change Community need Health and wellbeing Economic benefits 	<ul style="list-style-type: none"> \$100,000
12	Open Space	Redevelop the area of open space near oval number two for informal recreation purposes.	<ul style="list-style-type: none"> Greater Shepparton City Council 	High-Medium	<ul style="list-style-type: none"> Growth and change Community need Health and wellbeing Community engagement 	<ul style="list-style-type: none"> \$20,000

Facility / Issue	Works	Responsibility / Potential Partners	Priority	Key Planning Principles Relationship	Indicative Costing (Ex GST)	
				<ul style="list-style-type: none"> Diversity and equity 		
13	Community Centre	<p>Upgrade and extend the existing community centre to include:</p> <ul style="list-style-type: none"> Improved player change rooms Umpire change facilities Improved storage space for users of the reserve Additional meeting room / office space if required Improved universal access throughout the building including new accessible toilets which can be accessed from inside and outside the building by all Painting of facility Installation of new carpet Upgraded kitchen. 	<ul style="list-style-type: none"> Greater Shepparton City Council Kialla Sports Club Inc. AFL Goulburn Murray Kialla Knights Cricket Club Kialla Park Tennis Club 	Medium	<ul style="list-style-type: none"> Accessibility Growth and change Quality Community need Community engagement Economic benefits Partnerships 	<ul style="list-style-type: none"> Building works: \$400,000
14	Tennis (2)	<p>Upgrade tennis facilities:</p> <ul style="list-style-type: none"> Resurface tennis courts Install additional seating around the tennis courts 	<ul style="list-style-type: none"> Greater Shepparton City Council Kialla Park Tennis Club AFL Goulburn Murray 	Medium	<ul style="list-style-type: none"> Growth and change Quality Community need Health and wellbeing Diversity and 	<ul style="list-style-type: none"> \$312,000

Facility / Issue	Works	Responsibility / Potential Partners	Priority	Key Planning Principles Relationship	Indicative Costing (Ex GST)	
				equity		
15	Toilet block	Demolish the existing 'sports use toilet' at Kialla Park and develop new accessible toilets in the upgraded Community Centre that can be accessed from inside and outside the building by all.	<ul style="list-style-type: none"> Greater Shepparton City Council Kialla Park Sports Club Inc. Victorian Government's Community Facilities Funding Program 	Medium	<ul style="list-style-type: none"> Accessibility 	<ul style="list-style-type: none"> Demolition: \$6,000. New toilets part of the overall community centre cost.
16	Playground	Using the space created by demolishing the existing toilet block, increase the size and visibility of the existing playground into a play space and ensure the play space is universally designed to be accessible to all. Investigate play space concepts that provide improved play experiences to children of various ages and abilities.	<ul style="list-style-type: none"> Greater Shepparton City Council Kialla Park Sports Club Inc. Kialla Park Tennis Club Victorian Government's Community Facilities Funding Program 	Medium	<ul style="list-style-type: none"> Accessibility Community need Health and wellbeing Community engagement 	<ul style="list-style-type: none"> \$30,000
17	BBQ / Picnic Area	Once outside toilets are demolished and replaced within the pavilion, relocate BBQ / picnic area next to play area and install a drinking fountain along with accessible	<ul style="list-style-type: none"> Greater Shepparton City Council 	Medium	<ul style="list-style-type: none"> Health and wellbeing 	<ul style="list-style-type: none"> \$10,000

Facility / Issue	Works	Responsibility / Potential Partners	Priority	Key Planning Principles Relationship	Indicative Costing (Ex GST)	
	paths from the car park and pavilion to this area.					
18	Storage	Remove existing shed and shipping containers.	<ul style="list-style-type: none"> Greater Shepparton City Council Kialla Knights Cricket Club AFL Goulburn Murray 	Medium	<ul style="list-style-type: none"> Community need 	<ul style="list-style-type: none"> \$1,000
19	Parking (3)	Develop more event parking near oval number two. Install signage to indicate the site of the event parking and make it a condition that clubs / event managers must supply temporary traffic management infrastructure on site for major events parking, for example, signage / bunting / bollards.	<ul style="list-style-type: none"> Greater Shepparton City Council 	Low	<ul style="list-style-type: none"> Accessibility Growth and change 	<ul style="list-style-type: none"> \$1,000
20	Pedestrian and cycling access (2)	Identify and mark a clear route back towards the CBD for the shared cycling / walking path located on the eastern boundary of the reserve. Paint zebra crossing markings across the entrance road to the reserve in line with the alignment of the shared cycling / walking path so that drivers know to slow down and give way to cyclists and pedestrians.	<ul style="list-style-type: none"> Greater Shepparton City Council 	Low	<ul style="list-style-type: none"> Accessibility Growth and change Quality Community need Health and wellbeing Diversity and 	<ul style="list-style-type: none"> \$5,000

Facility / Issue	Works	Responsibility / Potential Partners	Priority	Key Planning Principles Relationship	Indicative Costing (Ex GST)	
				equity		
21	Oval #2	Upgrade playing surface of oval number two: <ul style="list-style-type: none"> • Improve drainage • Install seating around oval. 	<ul style="list-style-type: none"> • Greater Shepparton City Council • Kialla Knights Cricket Club • AFL Goulburn Murray • Dookie Cricket Club • Victorian Government's Community Facilities Funding Program 	Low	<ul style="list-style-type: none"> • Growth and change • Quality • Community need • Health and wellbeing 	<ul style="list-style-type: none"> • \$30,000
22	Bowls (3)	Develop an additional lawn bowls rink (if demand warrants) on the western side of the two existing grass rinks.	<ul style="list-style-type: none"> • Shepparton Park Bowls Club • Greater Shepparton City Council • Victorian Government's Community Facilities Funding Program 	Low	<ul style="list-style-type: none"> • Growth and change • Community need • Health and wellbeing • Economic benefits 	<ul style="list-style-type: none"> • Earthworks / drainage: \$25,000 • Seating: \$6,000
23	Parking (2)	Develop staff car parking between the	<ul style="list-style-type: none"> • Kialla Park 	Low	<ul style="list-style-type: none"> • Community 	<ul style="list-style-type: none"> • \$20,000

Facility / Issue	Works	Responsibility / Potential Partners	Priority	Key Planning Principles Relationship	Indicative Costing (Ex GST)	
	Kialla Children’s Centre and the tennis courts.	Children’s Centre		need		
24	Public Transport	Discussions to occur between Greater Shepparton City Council and Department of Transport, Planning and Local Infrastructure to further investigate the need for a new bus stop at the entrance to Kialla Park Recreation Reserve. Greater Shepparton City Council to promote the site of the new bus stop to users of the Reserve and the broader community if developed.	<ul style="list-style-type: none"> Greater Shepparton City Council Department of Transport, Planning and Local Infrastructure 	Low	<ul style="list-style-type: none"> Accessibility Health and wellbeing 	<ul style="list-style-type: none"> Officer time



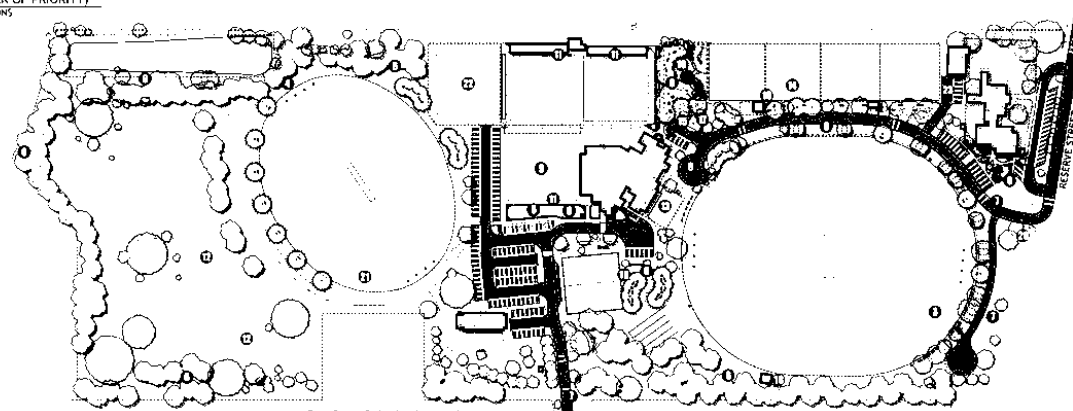
Figure 5: Bowls facility and oval #2

6.0 Proposed Site Plans

ACTION PLAN - KEY ELEMENTS (NOT IN ORDER OF PRIORITY)

SEE BACKGROUND REPORT FOR RESPONSIBLE ORGANISATIONS

- 1 Management (1).** Greater Shepparton City Council to establish a user group (comprised of community and Council) to meet several times each year to discuss common issues at Kialla Park, e.g. facility development, parking, security, etc. This group will oversee the implementation and evaluation of the master plan.
- 2 Management (2).** In the short term, Greater Shepparton City Council should continue to work with AFL to ensure that Kialla Park is a suitable location for the AFL Goulburn Murray offices. In the long term GSCC should have discussions with AFL to determine the strategic directions of AFL in the region. Greater Shepparton City Council should also undertake a study (separate to this master plan) to determine the feasibility of establishing an artificial grass oval and associated infrastructure at Shepparton Sports Precinct or other location.
- 3 Oval (1).** Upgrade playing surface and increase usability of oval number one by:
 - Improving drainage.
 - Installing a new irrigation system.
 - Replanting with warm season (drought tolerant) grasses.
 - Installing a scoreboard.
 - Installing additional seating around the perimeter.
 - Installing training level lights with capacity to be converted to game level lights in the future if warranted.
 - Extending its length and width.
- 4 Pedestrian and Cycle Access (1).** Develop a shared cycling / walking path that connects Purpy Ave to Seven Crosses via Kialla Park. This may require further investigation by Council in terms of land purchases or swaps.
- 5 Signage.** Undertake the following in regards to signage at Kialla Park Recreation Reserve:
 - Using appropriate signage (a large welcome sign that details activities available and directional signage), promote the Raftery Road entrance as the main entrance to the Reserve.
 - Council to develop a municipal-wide sponsorship and signage policy which ensures consistency of branding.
- 6 Landscaping.** Undertake the following landscaping works at Kialla Park Recreation Reserve:
 - Plant indigenous trees around the Reserve to provide shade for participants and spectators and to improve the visual amenity of the site.
 - Trees to be planted inside the mink, along the proposed shared pathway and around the perimeter of the Reserve (particularly to provide a barrier between homes and the reserve along the northern and southern boundaries).
 - Garden beds near the community centre, the rear of the bowls facility and around the Children's Centre to be upgraded to ensure that they are visually attractive, yet low maintenance and require little watering. Landscaping must be maintained by the responsible body to improve the overall amenity and visual appeal of the reserve.
- 7 Roadway.** Undertake the following road works at Kialla Park:
 - Install traffic calming measures and speed restriction signs near the Kialla Park Children's Centre.
 - Install additional lighting along access roads, particularly Recreation Drive (ensuring that lights will not negatively impact neighbouring properties).
 - Install signage to guide users to relevant sections of the Reserve and promote Raftery Road as the main entrance.
 - Seal a roadway along the east side of oval number one, culminating in a turning circle in the south east corner of the reserve.



- 1 Parking (1).** Make the following parking improvements at Kialla Park:
 - Formalise parking along north and east side of oval number one, ensuring that no cars can park under trees just south of the perimeter fence.
 - Develop 17 car parks between the tennis courts and the bowls area to establish a public BBQ area. Retain five car parking spaces next to the Community Centre for accessible parking, push-on driveways, staff parking during the week, and emergency access; increase the size of the turning circle.
 - Install bike parking racks near the Community Centre.
 - Provide a break in the curb in the bowls and tennis car park to allow greater accessibility.
 - Provide a break in the curb in the bowls car park to allow the Scouts to drive their trailer up to their shed.
- 2 Open Space.** Redevelop the area of open space near oval number two for informal recreation purposes.
- 3 Community Centre.** Upgrade and extend the existing community centre to include:
 - Improved player change rooms.
 - Uniform change facilities.
 - Improved storage space for users of the reserve.
 - Additional meeting room / office space if required.
 - Improved universal access throughout the building including new accessible toilets which can be accessed from inside and outside the building by all.
 - Porching of facade.
 - Installation of new carpet.
 - Upgraded kitchen.
- 4 Tennis (1).** Upgrade tennis facilities:
 - Resurface tennis courts.
 - Install additional warning around the tennis courts.
- 5 Toilet block.** Demolish the existing 'sports toilet' at Kialla Park and develop new accessible toilets in the upgraded Community Centre that can be accessed from inside and outside the building by all.
- 6 Playground.** Using the space created by demolishing the existing toilet block, increase the size and visibility of the existing playground into a play space and ensure the play space is universally designed to be accessible to all. Investigate play space concepts that provide improved play experiences to children of various ages and abilities.
- 7 BBQ / Picnic Area.** Once outside toilets are demolished and replaced with the pavilion, relocate BBQ / picnic area next to play area and install a drinking fountain along with accessible paths from the car park and pavilion to the area.
- 8 Storage.** Remove existing shed and shipping containers.
- 9 Parking (2).** Develop more event parking near oval number two. Install signage to indicate the site of the event parking and note it a condition that clubs / event managers must supply temporary traffic management infrastructure on site for major events parking, for example, signage / barriers / bollards.
- 10 Pedestrian and cycling access (2).** Identify and mark a clear route back towards the CBD for the shared cycling / walking path located on the eastern boundary of the reserve. Paint zebra crossing markings across the entrance road to the reserve in line with the alignment of the shared cycling / walking path so that drivers know to slow down and give way to cyclists and pedestrians.
- 11 Oval (2).** Upgrade playing surface of oval number 2:
 - Improve drainage.
 - Install seating around oval.
- 12 Bowls (1).** Develop an additional lawn bowls rink (if demand warrants) on the western side of the two existing grass rinks.
- 13 Parking (3).** Develop staff car parking between the Kialla Children's Centre and the tennis courts.
- 14 Public Transport.** Discussions to occur between Greater Shepparton City Council and Department of Transport, Planning and Local Infrastructure to further investigate the need for a new bus stop at the entrance to Kialla Park Recreation Reserve. Greater Shepparton City Council to promote the site of the new bus stop to users of the Reserve and the broader community if developed.

NOTE
 This is a draft plan and subject to change. The plan is for information only and does not constitute a contract. The plan is subject to the approval of the Council and the Department of Transport, Planning and Local Infrastructure. The plan is subject to the approval of the Council and the Department of Transport, Planning and Local Infrastructure.

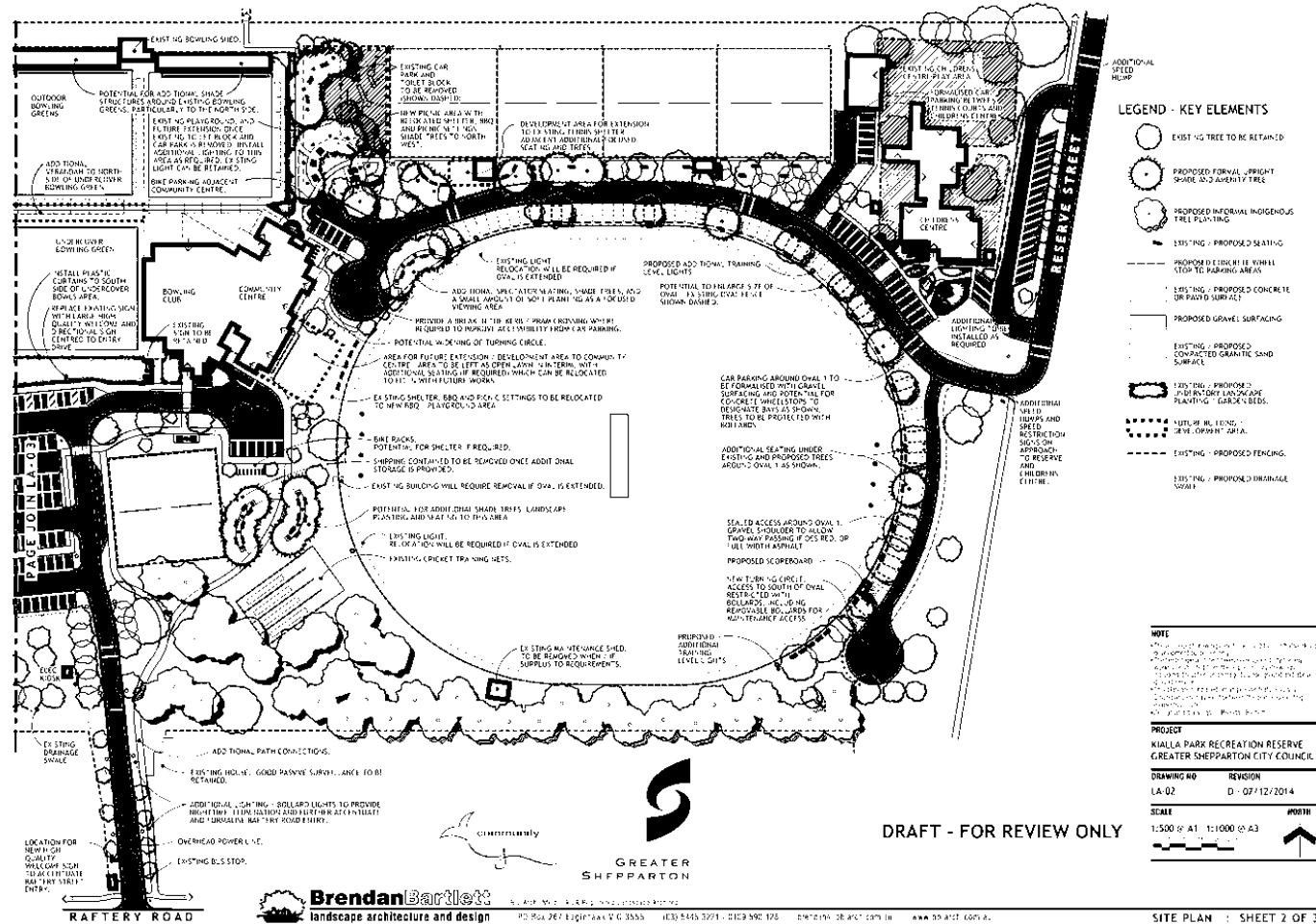
PROJECT	
KIALLA PARK RECREATION RESERVE GREATER SHEPPARTON CITY COUNCIL	
DRAWING NO	REVISION
LA-01	D - 07/12/2014
SCALE	
1:1000 @ A1	1:2000 @ A3
NORTH	

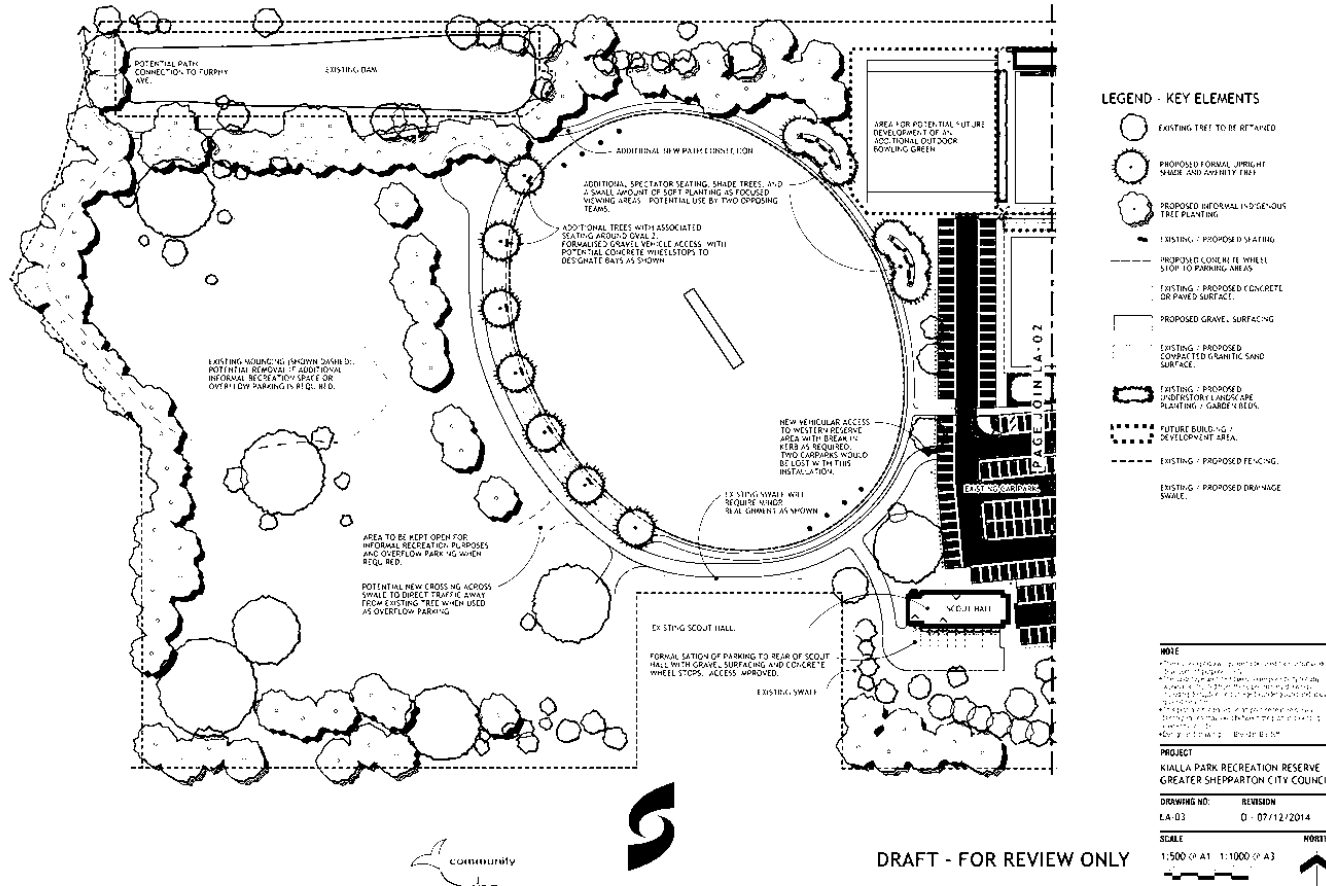
DRAFT - FOR REVIEW ONLY

SITE PLAN : SHEET 1 OF 3



Greater Shepparton City Council
 PO Box 261, Epsom Park VIC 3536 | 031 544 3277 | 03429 595 736 | www.gscouncil.vic.gov.au





DRAFT - FOR REVIEW ONLY

Appendix

7.0 Policy Context

Ten plans and documents were reviewed in order to understand the context in which future developments at Kialla Park may be assessed against. A detailed review of this literature is contained within the appendix of this report. In summary, the key issues arising from the literature review are:

Document	Key Points
Kialla Park Recreation Reserve Master Plan 2004	<p>A master plan for Kialla Park Recreation Reserve was adopted and endorsed by Council in 2004. It focussed on the provision of softball and baseball; however, demand for these sports did not grow as anticipated. An undercover bowls facility with clubrooms has been developed as a result of the plan. Key recommendations of relevance that are still to be achieved include:</p> <ul style="list-style-type: none"> • Upgrade main sports field surface and drainage • Creation of addition formalised parking areas • Construction of additional toilets to service Western End of Reserve. • Overall improvements to drainage <p>Purchase of additional land to the West of the Reserve to cater for future expansion</p>
Greater Shepparton City Council – Council Plan 2013-2017	<p>Under the strategic goal of economic, one of the objectives is to ‘Make Greater Shepparton the regional sporting capital of Victoria and a leading sporting destination.’ The aim attached to this strategy is: ‘Through ongoing development of high quality sporting infrastructure throughout Greater Shepparton and facilitating the conduct of regional, intrastate, interstate and national sporting events within Greater Shepparton we will become the sporting capital of Victoria.’ Relevant strategies associated with the aim are:</p> <ul style="list-style-type: none"> • Pursue opportunities for Greater Shepparton to be the location for major sporting events. • Build partnerships with state bodies to enable Greater Shepparton to be Victoria’s leading location for major events. • Continue to implement master plans that have been prepared for recreation reserves and sports facilities. • Review, adopt and implement the tourism and major events strategy to enable the breadth and quality of major events and tourism experiences to grow.
Sport 2050 Plan	<p>The plan lists the following recommendations for Kialla Park Recreation Reserve:</p> <ul style="list-style-type: none"> • Develop additional change and meeting room and storage facilities as an extension to Kialla Park Sports and Community (Centre) to support the relocation of the Goulburn Valley Football Umpires Association from Chas Johnson Reserve by 2022 at a cost of \$250,000. • Install training floodlights to the Kialla Park Reserve Main Oval by 2022 at a cost of \$132,000.

Document	Key Points
	<ul style="list-style-type: none"> • Construct new multi-purpose sports fields to the west of the number two oval and extend the western boundary of the number two oval by 2032 at a cost of \$400,000. • Consider absorbing competitive tennis currently occurring at Karramomous Recreation Reserve at Kialla Park by 2022.
Greater Shepparton 2030 Strategy	<p>The Strategy Plan sets out objectives and strategies for the continued growth and development of Greater Shepparton to carry the municipality forward to 2030. Some recommendations of relevance include:</p> <ul style="list-style-type: none"> • Promote provision and accessibility to public open spaces in new growth areas and in redevelopment of existing areas. • Encourage parks and facilities to cater for a range of recreational and sporting activities. • Ensure the maintenance, design and location of playgrounds in the municipality make them safer and more responsive to the needs of the community. • Encourage development on only one side of the road where land is adjacent to public open space (and where appropriate), to provide for passive surveillance and limit the 'privatisation' of public open space. • Establish a hierarchy of parks in the municipality designed to cater for the leisure and sporting needs of residents. • Promote provision and accessibility to public open spaces in new growth areas and in redevelopment of existing areas. • Encourage parks and facilities to cater for a range of recreational and sporting activities. • Promote a healthy lifestyle and the use of recreation and sporting facilities. • Encourage the upgrade of signage at open space and sports facilities to provide information about the location of parks and the range of facilities provided. • Encourage the provisions of linear links between existing and proposed open space areas and between urban areas. • Improve the image and appearance of public parks and spaces. • Protect open space areas from pest plants and animals. • Integrate open space planning / landscape treatments with environmental improvements of the storm water drainage system. • Enhance the image of sporting facilities and recreational reserves. • Encourage the creation of safe streets, public parks and spaces, and integration with Victoria Police' community safety programs. • Ensure recreation areas and sporting facilities are designed with safety considerations. • Ensure proposed public car parks are designed to maximise safety of the users.
2006-2018 Greater Shepparton Play Strategy	<p>Council's website states that the playground was updated in 2004. In terms of Council's support for play spaces within recreation reserves, the Play Strategy states that: "subject to reasonable evidence of demand and benefit, the Council will assist Recreation Reserve Committees of Management on a dollar</p>

Document	Key Points
	for dollar basis in the development of 'supplementary' play facilities".
Greater Shepparton Cycling Strategy 2013-2017	A cycling strategy is currently being prepared for Greater Shepparton City Council. It recommends the development of an off road shared path along Furphy Ave, through Kialla Park Recreation Reserve and then south along Seven Creeks Drive. The exact alignment through Kialla Park Recreation Reserve was not determined.
Capacities and Capabilities Assessment (2013)	This document outlines the potential for sporting events in Greater Shepparton. It notes that Shepparton Park Bowls Club has high potential to host international events. Opportunities for tennis and cricket events in Greater Shepparton are high, however Kialla Park would not be considered the home to these events; rather, it would provide a supporting role if required. The report notes that there is medium potential for junior AFL events, however this would be elevated to high potential should a synthetic surface be developed.
AFL Victoria: Growing the Heartland: Football Facilities Development Strategy 2014:2020	Directions of AFL Victoria include: <ul style="list-style-type: none"> • Need to adhere to AFL preferred Facilities Guidelines • Consider development of two or multi-oval sites (as many single oval sites already exceed the 20-25 hours of use per week that a natural turf oval can sustain) • Conversion to warm season grasses • Consider installation of synthetic grass ovals • Installation of lighting to a minimum of 50 lux for training and ideally 150+ lux for strategically located football venues • Appropriate facility design to ensure change rooms for female players and umpires, suitable function space, universal design and ESD principles • Creation of regional administration centres and hubs
North and South Shepparton Growth Corridors – Outline Development Plan Report (2003)	This Outline Development Plan (ODP) provides information about suitable open space allocations; road reserves, hierarchy and network; buffer zones; pedestrian/cycle movements; retarding basins; connections and densities in the proposed northern and southern residential growth corridors.
Australian Sports Commission and CSIRO (2013) The Future of Australian Sport – Megatrends shaping the sports sector over coming decades	The Australian Sports Commission (ASC), in partnership with the Commonwealth Scientific and Industrial Research Centre (CSIRO) have undertaken research which identifies six key megatrends that may redefine and impact the makeup of sport over the next 30 years. These six megatrends are: <p><i>A Perfect Fit</i></p> <ul style="list-style-type: none"> • Participation rates in individualised sport and recreation activities such as walking, cycling, aerobics, running and gym memberships has increased sharply. • Participation rates in many organised sports has remained steady or

Document	Key Points
	<p>declined.</p> <ul style="list-style-type: none"> • People are less likely to commit to regular organised sporting events. • People are reporting that they are increasingly busy and have time-fragmented lifestyles. • Expenditure on health care has risen and is forecast to continue to rise, as a result of people becoming more health conscious. • People are “increasingly playing sport to get fit rather than getting fit to play sport.” <p><i>From Extreme to Mainstream</i></p> <ul style="list-style-type: none"> • Lifestyle, adventure and alternative sports (such as mountain bike riding, skateboarding, rock climbing, etc) are increasing in popularity, particularly with younger people. • There is a “strong lifestyle element and participants often obtain cultural self-identity and self-expression through these sports”. • These sports may involve a sense of danger or thrill seeking and generally require participants to develop complex and advanced skills. • These sports are heavily promoted online via YouTube, Facebook, Twitter and other forms of social media, and there is strong demand for watching such sports on TV and on the internet. <p><i>More than Sport</i></p> <ul style="list-style-type: none"> • There is increasing recognition that sport can provide a range of benefits such as improved physical and mental health, lower rates of obesity, lower levels of chronic illness, improved social inclusion, reduced crime rates, positive relationships with other countries. <p><i>Everybody’s Game</i></p> <ul style="list-style-type: none"> • There is a need to provide appropriate sporting opportunities for all sectors of society including older adults and different cultural groups. <p><i>New Wealth, New Talent</i></p> <ul style="list-style-type: none"> • The growth of population and income levels in Asia may create stronger competition in the sports arena as skill levels of athletes improves due to much higher levels of investment in sporting outcomes, but at the same time provide business opportunities for Australia in relation to sports related television, tourism, equipment, services and events. <p><i>Tracksuits to Business Suits</i></p> <ul style="list-style-type: none"> • Sport has become increasingly commercialised with some elite athletes earning high wages for playing, in addition to very attractive sponsorship deals. • Sports that offer large financial returns to players may draw these players away from other sports with less attractive conditions. • In time, due to market pressures, many community based sports associations or clubs may be replaced by organisations that operate more like the private sector, i.e. with corporate structures and more formal governance systems. • The cost of participating in sport continues to rise and is a barrier to participation for many people. <p><i>Impact of Megatrends</i></p> <p>The impact of each of these megatrends needs to be carefully considered when planning for the future of Kialla Park Recreation Reserve. Of particular</p>

Document	Key Points
	<p>relevance is the need to consider how the Reserve can provide for individualised sports (such as personal training), extreme sports (such as parcour) and opportunities for older adults and multi-cultural groups (such as master level sports, social sports, cycling / walking paths or community gardens). Pricing structures will need to be carefully considered so that sports do not 'out-price' themselves from the market, and governance structures will need to lead towards more of a business model, in line with industry trends. Council's role in this regard is to keep clubs informed of megatrends and how they can respond to them.</p>
	<p>Source: http://www.ausport.gov.au/_data/assets/pdf_file/0019/523450/The_Future_of_Australian_Sport_-_Full_Report.pdf</p>



Figure 6: Oval #1 at Kialla Park Recreation Reserve

8.0 Participation in Sport and Recreation

In recent years, there has been a shift away from organised sport to more informal recreational activities that can be undertaken in small groups, alone, or at varying times of the day. The following table¹ shows the most popular physical activities (organised and non-organised) for people 15 years of age and over in Victoria in 2010:

Ranking	Activity	% of Participants over 15 years of age (at least once per year)
1	Walking (other)	36.6
2	Aerobics / fitness	24.7
3	Swimming	13.5
4	Cycling	12.7
5	Running	12.7
6	Golf	7.3
7	Tennis	6.8
8	Australian Rules Football	5.4
9	Basketball	4.8
10	Bushwalking	4.6
11	Netball	3.8
12	Cricket (outdoor)	3.5

Facilities that are multi-purpose in design and clubs that are innovative in their thinking will be best adapted to take advantage of the changing participation patterns and consequently remain as strong, viable clubs.

¹ Australian Government: *Participation in Exercise Sport and Recreation – Annual Report 2010*. http://www.ausport.gov.au/data/assets/pdf_file/0003/436134/ERASS_Report_2010-VIC.pdf

9.0 Demographic Summary

Demographic data provides information which can be used by organisations to understand the current make up of the community. Potential markets can be determined by examining the number of people in specific age groups. Other details such as household income may help decision making in terms of setting fees and languages spoken at home may indicate a need to have information translated into other languages for example. A brief summary of the demographic make-up of Kialla follows.

Information from the Australian Bureau of Statistics 2011 Census QuickStats² shows the following demographic information about Kialla (State Suburbs). It must be noted, however, that the catchment of the Recreation Reserve extends beyond the area known as Kialla (State Suburbs). Participants may travel from all over Greater Shepparton and beyond to take part in activities at the Reserve.

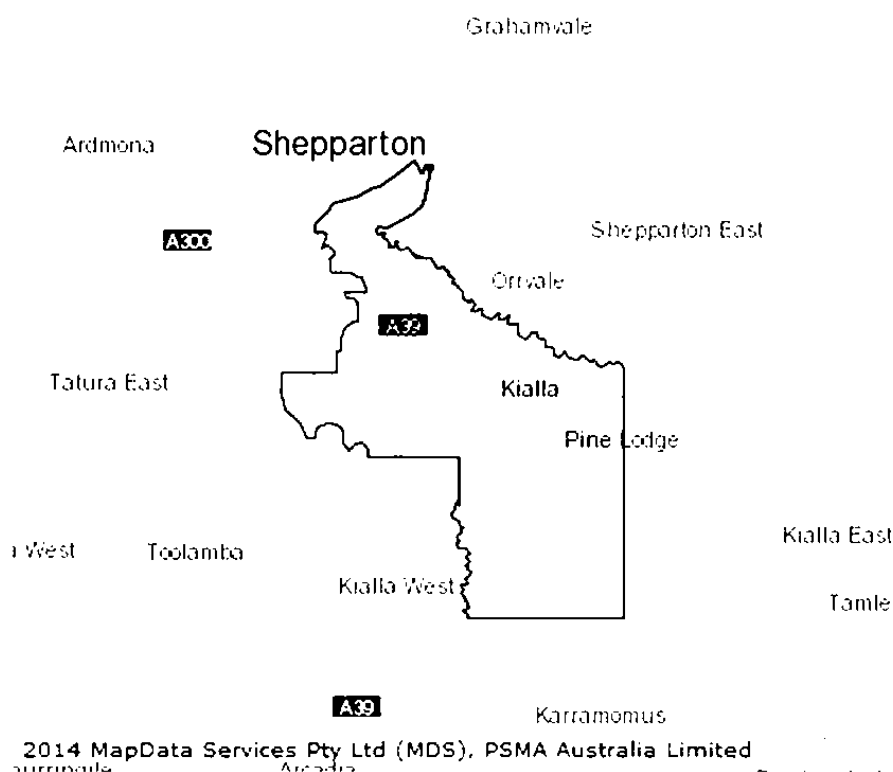


Figure 7: Location of Kialla

² Australian Bureau of Statistics. 2011 QuickStats. Kialla (SSC). Website: http://www.censusdata.abs.gov.au/census_services/getproduct/census/2011/quickstat/SSC20706?opendocument&navpos=95 (Viewed 1 February 2014)

Population and Age

- The Kialla community comprises of 5,810 people – 2,861 males and 2,949 females. The median age is 39 (compared with a median age of 37 for both Victoria and Australia).
- The population of Greater Shepparton is expected to grow from 63,000 in 2013 to 80,000 by 2031. Given that Kialla is in a designated growth area, it is expected that the local population will increase considerably.
- There are 1,576 families in Kialla, with an average of 2.0 children.
- Compared with Victorian figures, Kialla has a higher percentage of people aged between five and 19, 40-69 and 80-84 years of age. It has a significantly lower percentage of people aged 20-39, and a somewhat lower percentage of older adults aged 70-79 and over 85.
- Older adults (those over 55 years of age) comprise 32.7% of the population, compared with 32.2% of the total population of Victoria.

Indigenous Peoples

- Indigenous people make up 1.3% of the population compared with 0.7% for Victoria and 2.5% for Australia.

Birthplace and Languages Spoken

- The majority of residents were born in Australia (85.6% compared with the national figure of 69.8% and a state figure of 68.6%), with a further 1.5% of residents born in England, 1.5% born in Italy, 0.8% born in New Zealand, 0.8% born in India and 0.6% born in Turkey. The remaining 9.2% of residents were born in other countries.
- The majority of residents only speak English at home (87.4%). Of those who speak languages other than English at home, the most common languages are Italian (2.5%), Turkish (1.0%), Albanian (0.8%), Macedonian (0.4%) and Arabic (0.4%).

Employment and Income

- 22.0% of people over 15 years of age in Kialla carried out voluntary work for an organisation in the last 12 months, compared with 17.7% for Victoria.
- 2,997 people were in the labour force at the time of the 2011 ABS Census. 60.4% of these people worked full-time; 30.1% worked part-time; 6.2% were away from work; and 3.2% were unemployed. Compared with Victorian and Australian statistics, there are more slightly more people working full-time and part-time in Kialla and less people unemployed.
- Key employment industry sectors area school education (6.6% compared with 4.4% in Victoria); hospitals (4.9% compared with 3.9%); cafes, restaurants and takeaway food services (3.4% compared with 4.2%); fruit and vegetable processing (2.9% compared with 0.2%) and supermarket and grocery stores (2.7% compared with 2.4%).
- The highest category of occupational types in 2011 is professionals (19.8%) compared to (22.3%) in Victoria overall. Kialla features a slightly higher percentage of residents employed in clerical /administration (16.5% compared with 14.4% for Victoria) and management roles (15.5% compared with 13.2%). There are fewer labourers (8.7% compared with 9.0%), less community and personal service workers (7.7% compared with 9.3%) and less machinery operators and drivers (4.6% compared with 6.1%).

- The median weekly household income is \$1,426 compared with the Victorian median household income of \$1,216. 17.0% of Kialla households earn less than \$600 gross per week (compared with 23.8% of Victorian households) and 9.9% earn more than \$3,000 gross per week (compared with 10.4% of Victorian households).

Households

- 81.3% of households in Kialla are family households (compared with 71.2% for Victoria). The percentage of lone households in Kialla is significantly lower than for Australia overall (16.0% compared with 24.5% for Victoria).
- The most common form of family household composition is a couple family with children (50.0% compared with Victorian figures of 46.0%), followed by a couple family without children (40.4% compared with 36.7%). One parent families make up 9.0% of families, compared with the Victorian figure of 15.5%.

Home Ownership

- There is much higher home ownership (i.e. owned outright, or owned with a mortgage) than in Australia (83.0% compared with 70.1% for Victoria) and much lower percentage of homes rented (12.7% compared with 26.5% for Victoria).
- For those paying off homes, the median loan repayment in Kialla is \$1,733 per month, compared with \$1,700 for Victoria overall, and for those who are renting homes, the median weekly rental amount is \$280 compared with the Victorian median of \$277.

Transportation

- There is an average of 2.1 vehicles per dwelling.
- 81.2% of people travel to work by car, either as a driver or as a passenger compared with 66.2% for Victoria.

Future Population Growth

- In terms of future population projections, the Kialla community and communities in the southern growth corridor are expected to grow significantly.

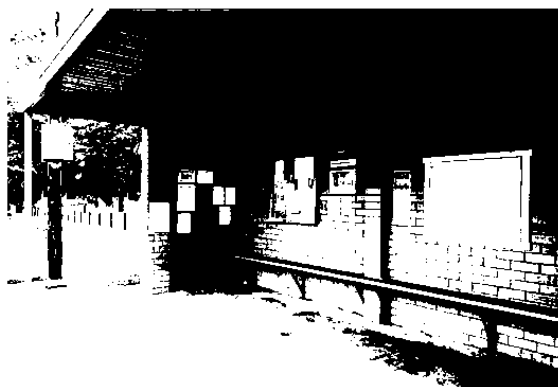


Figure 8: Tennis Club shelter

10.0 Benefits of Sport and Recreation

The benefits of participating in sport and recreation are well documented. Not only do individuals benefit from a health and wellbeing perspective, but the whole community benefits from a greater sense of community, economic opportunities, improvement to the environment, reduction in crime and a healthier society. Some of the benefits that can occur through participation in sport and recreation are:

Physical and Mental Health

- Reduced risk of colon cancer, heart disease, stroke, type 2 diabetes and high blood pressure
- Less likely to become overweight or obese
- Improved balance and coordination, resulting in fewer falls
- Stronger muscles, joints and bones
- Improved confidence and self-esteem
- Improved body image
- Improved motor skills
- Less likely to suffer from depression and anxiety
- Greater sense of achievement
- Reduced stress levels
- Higher energy and concentration levels
- Reduction in incidence and severity of illness and disability
- Increased life expectancy.

Social

- Greater sense of community
- Stronger, more self-reliant communities
- Greater social and friendship networks
- Reduced anti-social behavior and vandalism
- Helps to develop shared attitudes, values and codes of behavior in the community
- Breaks down barriers between different sectors of the community
- Stronger family relationships.

Economic

- Employment in sport and recreation activities, events, venues, clubs
- Improvements to local business viability through sale of sport and recreation

equipment, services or programs

- Reduction in health care costs – According to VicHealth³, physical inactivity by Australians “costs the health system at least \$400m in direct health care costs”, and is responsible for approximately 8,000 deaths annually
- Increases productivity of workers and reduces number of sick days
- Potential to attract businesses to the region if quality sport and active recreation settings, programs and services exist
- Flow on benefits to tourism businesses from people participating in sport and recreation events and activities.

Environment

- Protection of habitats, biodiversity and ecological integrity
- More attractive living environments
- A greater appreciation and awareness of the natural environment.



Figure 9: Kialla Park Children's Centre

³ VicHealth – “Physical Activity Fact Sheet”, April 2007

11.0 Trends in Sport and Recreation

In terms of sports participation, management and infrastructure, there has been a trend in recent years across the state and nationally towards:

11.1 General Trends

New activities

- Movement away from many traditional organised sports such as football, cricket, netball and tennis to more individual or small group non-organised activities, e.g. walking, aerobics, fitness classes, cycling, swimming, running, etc. At a local level, AFL football, soccer, tennis and netball have remained strong.
- Greater use of facilities by personal fitness trainers and their clients.
- Greater demand for lifestyle/non-traditional forms of sport, i.e. games that can be played on the street or indoors, e.g. street soccer.

Improved surfaces

- Installation of sports surfaces that help to reduce injuries and increase player comfort, e.g. sprung wooden floors, plexipave tennis courts.

Spectator facilities

- Installation of improved spectator facilities, e.g. retractable seating, shaded viewing areas.

Accessibility

- Installation of facilities to encourage participation by people of all abilities, e.g. use of ramps, unisex toilets with change tables, single storey buildings to allow for mobility aids and prams, Braille signs, etc.

Improved infrastructure

- Installation of lighting or higher standard of lighting to allow games and training to take place in the evenings, enabling greater use of facilities and flexibility in terms of programming.

Environmentally Sustainable Design Features

- Development of environmentally responsible practices such as solar hot water, recycled water systems, etc to reduce the impact of sports facilities and their users on the environment.

Safety

- Development or upgrading of facilities and equipment so that they meet the safety requirements of their designated sport.

Improved Planning

- Master planning of recreation reserves to ensure that needs of all existing and casual users are considered in the long term – including the linking of cycling / walking paths,

development of play spaces, landscaping and BBQ / picnic facilities to encourage family use of facilities.

Multi-Purpose Facilities and Spaces

- Development of multi-use facilities and spaces which can cater for a variety of traditional activities as well as non-traditional or emerging activities, e.g. pilates, yoga, meetings, conferences, expos, markets, children's programs, women's day time social competitions, master's games, etc.

Social Aspects

- Greater emphasis on social competitions mid week during the evenings as opposed to structured competition on a Saturday afternoon.

School access

- Greater demands on some facilities by school groups due to the declining standard of school sporting infrastructure in some areas or the lack of facilities at new schools.

Events

- Greater demand on sporting facilities for special events and tournaments.

Sporting Hubs

- Co-location of several sporting facilities to form recreation precincts to maximise limited resources and to cross-market activities.

Value of Physical Activity

- Understanding of the relationship between physical activity participation and improved health, wellbeing and social connectedness.

Improved Facility Standards

- Expectation by the community that facilities, programs, services and management will be of a reasonably high standard.

Greater Availability of Facilities

- Expectation that facilities will be available during a range of time slots throughout the week, including weeknight, early morning and weekends.

Electronic Communication

- Expectation by user groups that draws, ladder, information, etc about local sports competitions are available via the internet.

12.0 Community Needs Summary

A summary of needs, expressed by individual community members, follows:

Item	Details	Source of Information
Management	Actively encourage all user groups of the Reserve to join the Kialla Park Sports Club as paid up members	Written submission
	Establish a committee made up of user groups, community and Council to meet several times each year to discuss mutual issues.	Come and Try Day Key stakeholder interview
	Consider contracting AFL Goulburn Murray to undertake bookings and management of Kialla Park for a fee	Key stakeholder interview
	Encourage a local football team to base themselves at Kialla Park	Community survey
	Install CCTV cameras so people feel safer at the reserve	Community survey
	Facilitate more events and family activities on site, e.g. boutique market, open air concerts, twilight movies, etc	Community survey
	Oval #1	Improve playing surface and drainage of ovals
Extend the length and width of oval number one		Key stakeholder interview
Install artificial grass on oval number one		Key stakeholder interview
Install training level lighting on oval number one		Written submissions Key stakeholder interview Community survey
Install a scoreboard on oval number one		Key stakeholder interview
Oval #2	Install more seating around the oval	Come and Try Day
	Improve drainage	Come and Try Day Key stakeholder interview
	Develop shade and seating around the oval	Key stakeholder interview Come and Try Day
	Expand size of oval number two	Key stakeholder interview
Community Centre	Construct an additional toilet block for oval number two (shared with Scouts)	Community survey
	Upgrade the building to include additional office space and storage	Come and Try Day Key stakeholder interview
	Upgrade furniture and fixtures – carpets, tables, chairs, sound system, signage, painting	Community survey Key stakeholder interview
	Extend community centre to include a second story and to develop a function room and kitchen closer to the oval	Key stakeholder interview
	Upgrade cricket change rooms	Community survey
Tennis	Construct female umpire change facilities	Recreation Trend
	Install two new tennis courts	Key stakeholder interview
	Increase access to tennis courts for non-club members	Community survey
	Upgrade tennis club sheds to enable the canteen	Community survey

Item	Details	Source of Information
	to re-open and to provide more shade and better viewing areas	
	Place netball court markings on two stand alone tennis courts to allow coaching courses to be run from Kialla Park	Key stakeholder interview
	Replace synthetic grass on tennis courts	Key stakeholder interview
	Redevelop two hard courts as mini courts for junior tennis	Key stakeholder interview
Bowls	Install more seats and tables around tennis courts	Come and Try Day
	Develop an additional lawn bowls green	Come and Try Day Key stakeholder interview Community survey
	Construct additional toilet near the new lawn bowls green	Key stakeholder interview
	Install more shade around lawn bowls greens	Key stakeholder interview
	Replace carpet on undercover bowls green by 2021	Key stakeholder interview
	Install plastic curtains on south side of undercover bowls area	Key stakeholder interview
	Construct veranda on northern side of undercover bowls area	Key stakeholder interview
Playground	Relocate to a more central location	Key stakeholder interview
	Develop an additional playground on site	Community survey
	Upgrade and extend existing playground	Community survey
	Increase size and visibility of play space by relocating toilet block	Community survey
Scout Hall	Upgrade toilets and kitchen in the scout hall and convert storage space into a clubroom to allow cricket to share the facility	Key stakeholder interview
	Develop additional storage space for scouts	User group survey
Toilet block	Make sure toilet block is unlocked more often	Come and Try Day
	Upgrade toilets	Key stakeholder interview
Parking	Relocate toilet block to open up play area more	Community survey
	Formalise parking around ovals	Come and Try Day
	Establish additional parking on land to the east of the tennis courts near the Children's Centre	Key stakeholder interview Community survey
	Provide a break in the curbing around the car park to allow the Scouts to drive their trailer up to their shed.	Key stakeholder interview
	Provide a break in the curbing at the tennis / bowls car park so that people in wheelchairs can manoeuvre themselves onto the footpath	Come and Try Day
	Install bike parking racks near the Community Centre	Key stakeholder interview
	Install lighting in the car park near the tennis courts	Come and Try Day
Entrances and Roadways	Seal road around oval number one	Key stakeholder interview

Item	Details	Source of Information
	Develop a more prominent entrance off Raftery Road and make this the main entrance	Key stakeholder interview
	Need to install traffic calming measures and speed restriction signs near the Kialla Park Children's Centre	Key stakeholder interview
Pedestrian and Cycle Access	Create a through road through the reserve	Community survey
	Need to consider how pedestrians and cyclists can move about safely within the Park	Key stakeholder interview
	Install a footpath along Raftery Road to allow easy access to the reserve	Community survey
	Develop a circuit walking track in open space area to connect to Furphy St	Come and Try Day
Signage	Develop a shared path traverses Kialla Park and links Riverview Drive to Seven Creeks Estate	Community survey
	Install welcome sign at Kialla Park detailing the opportunities available on site	Verbal submission Community survey
	Create better directional signage from Goulburn Valley Highway	Come and Try Day Key stakeholder interview Community survey
	Provide signage indicating oval number one and oval number two	Come and Try Day
Landscaping	Improve garden bed in front of cricket changes rooms	Key stakeholder interview
	Create improved gardens beds with flowers	Community survey
	Create a beautiful garden in which to sit	Community survey
	Plant additional indigenous trees around the reserve	Come and Try Day Community survey
BBQ / Picnic Area	Plant trees along proposed walking track	Come and Try Day
	Install drinking fountains at Kialla Park near BBQ / picnic area	Key stakeholder interview
Lighting / Electricity	Install doggie waste bins on site	Community survey
	Improve lighting around Kialla Park Children's Centre, in car parks and along access roads	Key stakeholder interview
Storage	Upgrade lighting along Recreation Drive	Community survey
	Build a storage shed onsite and remove shipping container	Come and Try Day Key stakeholder interview
Open Space	Construct a new oval next to oval number two	Key stakeholder interview Community survey
	Establish a community garden at the reserve	Community survey
	Clean up west side of the reserve	Community survey
	Develop soccer and hockey fields	Community survey
	Construct a heated pool and an outdoor pool at the reserve	Community survey
	Build a lake at the reserve	Come and Try Day Community survey
	Develop an obstacle course with a running / fitness track, disc Frisbee golf course, half court netball / basketball court, concrete pad for other ball games	Come and Try Day Key stakeholder interview

Item	Details	Source of Information
	such as 4 square, parcour equipment, exercise equipment, tennis rebound wall, etc in open space area	



Figure 10: Car parking in front of Community Centre

13.0 Facilities and Infrastructure Audit and Needs Analysis

The following section provides an overview of the type and condition of infrastructure located at Kialla Park Recreation Reserve and the needs identified through audits and consultation.

13.1 Oval Number One



Size, Alignment and Features

The number one oval was constructed in 1984 and the turf wicket was installed in 1988. The oval is approximately 160m long x 140m in length (excluding 3m run off at each end) and features a turf cricket pitch and a set of AFL football goals at each end (the preferred size for senior level football is 165m x 135m). The ground is aligned in an east west configuration, which is not ideal as players are kicking into the setting sun on winter afternoons, however there is

no space to turn the oval into a north south configuration where it currently lies. Cricket nets have been placed behind the football goals at the pavilion end of the ground and the entire oval is enclosed by a post and rail fence featuring several advertising sign boards. There are several bench seats at the Community Centre end of the ground for spectators, and some shelter is available under the veranda attached to the pavilion, although this is some distance from the oval.

Surface condition

The surface of oval number one is predominantly couch grass (mixed with a variety of other species) and the field is watered via in-ground sprinklers with four main valves. The irrigation system is in good condition and provides an effective coverage of the ground, however drainage is poor. Water to irrigate the oval is sourced from the Goulburn River.

Lighting

Lighting is provided by two poles near the Community Centre. The standard of lighting is very poor and well below the minimum 50 lux required for football training or the 100 required for club competition and match practice. Powercor estimates that the two existing lights draw approximately 36kW. Should football or other winter based sports start to use the oval on a more regular basis, the fact that there are only two lighting towers concentrated on one part of the oval creates over-use of the section of oval in front of the Community Centre, therefore additional light towers are required to spread the load and cater for current and future community demand for lit oval space.

Given the proximity of the Shepparton Aerodrome, Council staff have advised that reference should be made to Regulation 94 of the Civil Aviation Regulations 1988; the National Airports Safeguarding Framework Guideline E: Managing the Risk of Distractions to Pilots from Lighting in the Vicinity of

Airports; the Manual of Standards Part 139-Aerodromes; and GSCC Obstacle Limitation documents to confirm that lighting is able to be upgraded at the reserve. Maps provided by Greater Shepparton City Council indicate that Kialla Park Recreation Reserve is located just outside the boundary of the aerodrome zone. Nevertheless, advice from a lighting specialist indicates that any new light towers will need to be fixed with warning lights to ensure that pilots are aware of the potential obstacle nearby. Another consideration with the installation of additional light towers is the potential for objections from nearby residents regarding light spill. Generally a distance of 20m from homes will result in less light spill.

It is recommended that two additional light towers are installed with training level lights. This recommendation is supported by Greater Shepparton's Sport 2050 Plan. Pending their actual height (they should generally be between 27-30 metres high), the two existing poles may also need to be replaced in order to meet current Australian Standards. Each of the four light towers needs to have capacity to be converted to match level lighting in the future if such demand exists (i.e. be of sufficient height, have space to accommodate some additional lights; have suitable cabling to allow this to occur, and switchboards need to have the capacity to cope with additional requirements).

Usage of Oval Number One

Kialla Knights Cricket Club (A and B grades) access the oval for training and games each week during the cricket season, and lower grades use the smaller oval which has a synthetic wicket for its games. The club has expressed interest in holding night games if improved lighting is installed. At the very least, it would find improved lighting beneficial at the beginning and end of the cricket season for training. At present the cricket club appears to be experiencing a decline in membership, however, given that Kialla Park Recreation Reserve is located in a growth corridor and given the work by Cricket Australia and Cricket Victoria to grow the game, this decline could well turn around in the near future.

AFL Goulburn Murray also regularly uses the ground for trainer's courses, coach's forums, school holiday program clinics and Auskick. At present, the facility is mainly used for junior level AFL football training and games are held at the ground during the football season and the ground is also used for pre-season training by Shepparton United and Shepparton Bears. There is potential in the future that the Murray Bushrangers will relocate to Kialla Park Recreation Reserve for training in the near future (they have already held a number of training sessions at the ground) and also potential for a Girls Football Academy to be developed and based onsite. At a state-wide level, AFL football is currently experiencing a period of growth, and additional programs such as AFL 9's may attract a whole new market to the game.

Privately operated personal trainers also use the oval, as do schools such as Guthrie Street Primary School (football matches and soccer training), Kialla West Primary School (football matches) and Shepparton Notre Dame Junior Football Club (football training and matches). Note that Shepparton Notre Dame Junior Football Club will relocate from Kialla Park Recreation Reserve in 2015 as it is

currently developing its own ovals. If a football club is to relocate to Kialla Park Recreation Reserve on a permanent basis, there will be a need for infrastructure such as player shelters / coach's boxes, a scoreboard and potentially a ticket box at the nearest entrance.

Future Development of a Multi-use Synthetic Sports Surface

All user groups are very keen to see an upgrade to the playing surface of the ovals at Kialla Park Recreation Reserve. The installation of a synthetic ground is likely to be of significant benefit to the Greater Shepparton community and should be strongly supported, subject to a feasibility study. It could be used for football and cricket (non-turf based competitions), and if additional line marking is provided, could also be used for soccer. A key benefit of a synthetic surface is that it can be booked out to a range of clubs and organisations for training, particularly when other grounds are wet or when other grounds are being renovated. Money does need to be set aside each year, however, in order to fund the replacement of the surface at the end of its lifespan, just as money needs to be provided each year to cover the cost of turf management of sports fields.

Given that oval number one is not quite large enough for senior football; that it is configured in an east west alignment rather than the preferred north south alignment; that there is limited parking available on site; and given that A Grade cricket is played on the oval and requires a turf wicket to remain in the competition; Kialla Park Recreation Reserve does not provide the most suitable location in Greater Shepparton for a synthetic sports ground. Instead, further investigation should be undertaken by Greater Shepparton City Council to explore the option of accommodating such a facility at an alternative location such as the Shepparton Sports Precinct. This would allow a full size ground to be developed in the correct alignment, as well as opportunities to share the facility with numerous other sports located at the Sports Precinct, such as soccer.

AFL Goulburn Murray understands that funding may be available from AFL Victoria to develop a synthetic grass oval in Shepparton, proving that matching funds are available locally. At present the only full sized AFL-approved synthetic football ground in Victoria is located in Point Cook in Wyndham City, but two others are planned in City of Casey and City of Melbourne. A multi-purpose facility, lighting and parking would need to be already available on site or newly constructed to support this development.

Recommendations:

Upgrade playing surface and increase usability of oval number one:

- **Improve drainage**
- **Install a new irrigation system**
- **Replant with warm season (drought tolerant) grasses**
- **Install a scoreboard**
- **Install additional seating around the perimeter**
- **Install training level lights with capacity to be converted to game level lights in the future if warranted.**
- **Extend its length and width**

In the short term, Greater Shepparton City Council should continue to work with AFL to ensure that Kialla Park is a suitable location for the AFL Goulburn Murray offices. In the long term GSCC should have discussions with AFL to determine the strategic directions of AFL in the region. Greater Shepparton City Council should also undertake a study (separate to this master plan) to determine the feasibility of establishing an artificial grass oval and associated infrastructure at Shepparton Sports Precinct or other location.

13.2 Oval Number Two

Usage

Oval number two at Kialla Park is used primarily by Kialla Knights Cricket Club for junior cricket. Dookie Cricket Club also uses oval number two on Saturdays as its second ground and as a venue for finals matches.

Size and features

With dimensions of approximately 140m in length and 100m in width (excluding 3m run off at each end), the oval is suitable for lower grade and junior cricket along with junior football. It was



constructed in 1990. There is a synthetic cricket pitch in the middle of the oval and the ground is enclosed by a simple galvanised iron post and rail fence. There are no advertising signs on this fence; and no seating or shade for spectators. Further, there are no AFL football goals posts on this oval, nor any coach's boxes, scoreboards or lighting.

Like oval number one, the irrigation system features in-ground sprinklers with four main valves and works effectively. The drainage on the oval is poor. Water is sourced from the

Goulburn River and the oval is located within a flood overlay area. The surface is primarily made up of couch grass and a mix of other grasses. There is potential in the future for this oval to be used by other clubs / groups for a range of activities. Previously a baseball club used the facility, however it has since folded, and the rugby club has relocated to Vibert Reserve.

Recommendation:

Upgrade playing surface of oval number two:

- Improve drainage
- Install seating around oval.

13.3 Kialla Park Community Centre



History and features

The Kialla Park Community Centre, which is managed by Kialla Park Community and Sports Club Incorporated, was constructed in four separate stages, with the last stage being added in 2001. It features home and away team change facilities incorporating showers, toilets, urinals and an area in which to change (primarily used by cricket clubs); office space (currently leased to AFL Goulburn Murray); kitchen facilities; and a function space able to cater for approximately 150 people.

Future needs

It is felt by the community and various user groups that this facility, particularly the social area, is under-utilised and in need of a facelift to better service existing and potential user groups and to encourage greater utilisation. They also feel that fittings and furniture are somewhat dated and are a barrier when attempting to hire out the facility to external groups. Specific suggestions from user groups include:

- repainting the inside of the building
- installing new carpets
- purchasing new furniture (that is able to stack more easily)
- installing an upgraded sound system
- improving external signage
- extending the front of the building, including the kitchen, towards the oval
- closing in of the courtyard area to become a storage area
- Upgrading change rooms and constructing female umpire change facilities (if more football is likely to be played at the reserve).

The social room is ideal for seminars and conferences, particularly as it has its own dropdown screen and data projector unit. It could also be used for a variety of other community events, pending an upgrade. Greater Shepparton's Sport 2050 supports the idea to develop additional change and meeting rooms and to develop more storage facilities at the Community Centre.

Potential future use

AFL Goulburn Murray and AFL Victoria are keen to establish a regional sports administration hub in Greater Shepparton to accommodate state and regional administrators on a regular or an occasional basis, e.g. AFL Victoria (including the Girls Academy), Cricket Victoria, Netball Victoria, Bushrangers Football Club. Given that AFL Goulburn Murray has already established an administrative office in

the Community Centre at Kialla Park Recreation Reserve, it would like to build upon this to create a regional sports administration hub, at least in the short term.

In order to achieve a functioning regional sports hub, AFL Goulburn Murray would ideally like to extend the Kialla Park Community Centre building at the rear by taking the glass wall out to the bowls BBQ area and installing a reception area, additional office space, storage space, a multi-purpose room that could be used for tribunals and another room that could be used as a board room. However, there may be opportunities in the future for AFL Goulburn Murray to relocate to a larger venue such as the Shepparton Sports Precinct, so it is important that any works undertaken within the Community Centre at Kialla Park Recreation Reserve are planned to be flexible and multi-purpose in design so that the spaces created are able to be used by other groups in the future.

Building issues

Any building developments need to be multi-purpose, adopt universal design principles, use environmentally sustainable design principles and ensure that they are capable of changing their use according to changing community demands. They also need to ensure that they do not alter the original intention purpose of the centre, i.e. to be an accessible community based facility.

The structural capacity of the building to accommodate an extension would also need to be further investigated to determine whether or not the ground movement has impacted the structure of the slab on which the building lies, and whether or not there is any termite damage. Advice received from Greater Shepparton's building department indicates that the foundations of the building are not capable of carrying a second level.

Recommendations:

Upgrade and extend the existing community centre to include:

- **Improved player change rooms**
- **Umpire change facilities**
- **Improved storage space for users of the reserve**
- **Additional meeting room / office space if required**
- **Improved universal access throughout the building including new accessible toilets which can be accessed from inside and outside the building by all**
- **Painting of facility**
- **Installation of new carpet**
- **Upgraded kitchen**

13.4 Cricket Practice Nets

Usage and features

There are four cricket practice nets located at Kialla Park. These nets are in good condition and are used on a regular basis by Kialla Knights Cricket Club, Dookie Cricket Club and members of the public who are not necessarily attached to a club. These nets are left open. At this stage, the supply of cricket nets is adequate for the demand. There may be an opportunity in the future to install curtain nets so that the cricket nets can be used for a variety of different activities such as modified soccer,

hockey, lacrosse and a variety of other small-sided or modified sports or physical activities if the need arises.



13.5 Tennis Courts



History, features and condition

Kialla Park features ten tennis courts in total. The first bank features six synthetic grass tennis courts located between Kialla Park Children’s Centre and the bowls facility, as well as two hard courts in this area. The courts were progressively built from 1983 onwards and lights were installed in 1996. The synthetic grass courts are lit with 10 lights and feature ample seating for players and spectators (approximately 10 bench seats and a picnic table) outside the tennis court fence. The courts are in

good condition, although the surface will need to be replaced when it reaches the end of its lifespan (within the next 3-5 years). Some basic maintenance such as weed removal and replacement of sand is also required to maintain courts in the best condition possible until the surface is replaced.

There are three brick shelters for players, next to the courts, which potentially seat up to 14 people each. Although these shelters provide some protection from the sun, additional shade is still required. Equipment is stored at the rear of one of the shelters. Due to the fact that there is no running water to the shelters, the tennis canteen had to be closed down. The tennis club would like to see water connected so that they can run a canteen on site. There is limited access to the kitchen in the Community Centre if events are being held there on Saturday nights.

Second bank of courts

At the front of the bowls pavilion, there is a second bank of courts featuring an additional two unlit hard courts (bringing the total number of courts to 10). These courts are located some distance away from the main bank of courts, which could prove problematic for competitions if not managed well. They are in poor condition. Both sets of courts are used by Kialla Park Tennis Club.

Usage

Kialla Park Tennis Club currently has 90 adult members (41 male and 49 female), as well as 103 juniors (52 male and 51 female). It holds competitions on Tuesdays, Wednesdays, Saturdays and Sundays. Training is held every day except Saturday and Sunday. The courts are used all year round. Greater Shepparton's Sport 2050 Plan has suggested that competitive tennis currently occurring at Karamomous Recreation Reserve be absorbed at Kialla Park by 2022. This may result in additional players in the future.

Future needs

The tennis club would like an additional two courts, as 12 courts are generally required to run club events. Demand for courts is high at peak times, particularly after school when junior tennis lessons are conducted. In 2013, 150 juniors received tennis coaching. However, there is insufficient space at Kialla Park to accommodate an additional two courts and Greater Shepparton City Council's priority in terms of tennis court developments is to invest its resources into the regional tennis complex at McKeown Reserve and the Shepparton Lawn Tennis courts (with 22 grass courts). One option to consider is converting the two stand alone hard courts to mini courts for junior tennis. Additional tennis courts are also located at Kialla West Recreation Reserve, with more likely in the district if a new secondary college is built in Kialla.

Player amenities at the tennis courts are very basic. The club would like to render the existing shelter and expand the viewing area (double brick, span line roof with fans but no gable, concrete base, open sides, eave on north and south ends of building and some seating and a bench) as well as adding additional storage to the other brick building. Any works need to be built with a consistent design to the bowls club pavilion, i.e. good quality finishes, modern look and complemented by attractive landscaping.

Recommendations:

Extend the existing tennis shelter (double brick, span line roof with fans but no gable, concrete base, open sides, eave on north and south ends of building and some seating and a bench) and add additional storage to the other brick building.

Maintain the tennis courts in the best condition possible until the surface is replaced within the next 3-5 years.

Upgrade tennis facilities:

- **Resurface tennis courts**
- **Install additional seating around the tennis courts**

13.6 Bowls Pavilion



History and features

Following the amalgamation of the Shepparton Bowling Club and the Kialla Park Bowls Club in 2004 to form the Shepparton Park Bowls Club, a large pavilion featuring a small member’s lounge, two offices, bar, cafe, storage space, full commercial kitchen, function area able to cater for up to 300 people, area to display memorabilia, entrance, air conditioning and toilets was constructed in 2010. This licensed facility is in excellent condition. It also features solar panels on the roof and rainfall is also collected from the roof.

The key tenant, the Shepparton Park Bowls Club, does not allow functions such as weddings or 21st birthday parties, due to the potential for damage to the facility; however, it welcomes meetings and conferences.

There are eight designated accessible parking bays at the entrance to the facility, as well as parking around the west, south and east sides of the facility.

13.7 Undercover Bowls Facility



Features

Next to the bowls pavilion is a large undercover bowls facility featuring eight artificial grass rinks, lighting, heating and overhead fans. The southern and western walls of the facility provide some protection from the weather through the construction of partial walls, although the club would like to install plastic curtains on the southern side to add more protection. The bowls pavilion is located on the eastern

boundary, and the northern boundary looks over the lawn bowls rinks. The club would also like to construct a veranda on the northern edge of the undercover facility to prevent rain from coming into the playing area on wet days.

History and usage

Although constructed in 2010, the undercover bowls facility was officially opened in 2011. The facility is used on a daily basis (except for Wednesdays) by Shepparton Park Bowls Club (with 140 current pennant players), visiting bowls clubs and schools. There is potential that smaller clubs in the region may close, with members transferring to Shepparton Park Bowls Club due to the quality of the facilities.

Events

Shepparton Park Bowls Club has also attracted significant events to the region in recent years. The Australian Open, for example, was held at the facility in 2009 and 2010, and the Victorian Open was held in 2011, 2012 and 2013. Temporary grandstands are hired for such events. It is expected that the Victorian Open will be held at the venue again in 2015 for a seven day period, attracting over 1,000 players, with an estimated economic benefit of around \$1.2m to the region. Events such as these help the club to remain financially viable and to maintain their facilities to a high standard.

Future plans

The undercover carpet green surface has a lifespan of approximately 10 years and will therefore need to be replaced around 2024. Shepparton Park Bowls Club needs to develop a capital replacement plan to provide for the replacement of the carpet.

Recommendations:

- **Replace carpet on undercover bowls green**
- **Install plastic curtains on south side of undercover bowls area**
- **Install a veranda on the northern side of this facility**
- **Develop a capital replacement plan for replacement of the undercover carpet green surface.**
-

13.8 Outdoor Bowling Rinks



Features, history, usage and future plans

There are seven outdoor grass bowling rinks at Kialla Park, surrounded by numerous player shelters. First built in 1987 on a progressive basis, these rinks are in excellent condition and are lit by six lights. Attractive landscaping features at the front entrance to the bowls area. The facility is used by Shepparton Park Bowls

Club and other visiting clubs and schools. The club would ideally like additional shade structures around the outdoor bowling rinks to protect players from the sun. Long term, it would also like to see an additional bowling green established to the west of the existing bowling green if demand warrants, plus an additional toilet facility.

Recommendations:

- Provide additional shade around the lawn bowls greens
- Develop an additional lawn bowls rink (if demand warrants) on the western side of the two existing grass rinks.

13.9 Play Space



Features and future plans

A well designed fenced playground is situated near the tennis courts and features a creative wooden play structure with a sandpit, bench and shop front; combination unit with slide and various other components; shady trees; pathways; boardwalks; rocks; a variety of different surfaces; and good quality landscaping. The playground is primarily used by tennis club members and some members of the public. The playground is somewhat secluded,

and therefore not all users of the reserve are aware of its existence. Prior to the upgrade of this playground, equipment was dispersed throughout the reserve (i.e. behind the community centre, at both ends of the tennis courts and near the Scout Hall), but its level of use was reported to be quite low. It is recommended that if the community centre is extended, new toilet facilities are established within that facility that can be accessed internally and externally. This would enable the space previously occupied by the toilet block to be opened up to incorporate a larger play area, BBQ, picnic tables, shelter and drinking fountain. To further enhance the usability of this space, it is suggested that 17 car parking bays next to the bowls greens are removed and that car parking is formalised along the northern boundary of oval number one. This will enable a pedestrian zone from the Community Centre to the play area, picnic area and tennis courts.

Recommendation:

Using the space created by demolishing the existing toilet block, increase the size and visibility of the existing play space and ensure the play space is universally designed to be

accessible to all. Investigate play space concepts that provide improved play experiences to children of various ages and abilities.

13.10 Kialla Children's Centre



History and usage

The Kialla Children's Centre is a not for profit centre (not managed by Greater Shepparton City Council), and is located at the entrance of Kialla Park on Reserve Street. This council owned brown brick building was constructed in 1980 and was recently extended. It is licensed for 105 children per day and currently at full capacity. Given the location of the facility in the southern growth corridor of Shepparton, demand is likely to continue to be very high well

into the future until such time as additional early year's services are established.

Programs, staffing and features

Programs operating from the centre include childcare (44 places – with a long waiting list), kindergarten (78 children in 3 year old kinder and 80 in 4 year old kinder) and maternal and child health services. The centre employs 27 staff. Inside the building there are program rooms, toilets and several offices. At the rear of the building there is a fenced outdoor play area. There is formal car parking along the east side of the centre and some parks directly in front, including one designated accessible parking space. Some car parking has also been developed next to the oval, primarily for staff.

Future plans



Staff would ideally like to create another formal parking area between the centre and the tennis courts. The outside area of the centre has been landscaped to help create a welcoming atmosphere; however, it is not particularly well maintained.

13.11 Scout Hall



Features, history and usage

A scout hall on the western boundary of Kialla Park Recreation Reserve features an activity / hall area, storage space, a kitchen, three toilets and three showers. This mud brick facility, which was constructed in 1990, is in average condition, but has been upgraded recently by rendering the outside and improving lighting. It is used by 16 cubs and five scouts on Monday and Tuesday nights and occasionally on weekends. The scouts sometimes use the oval for activities such as archery.

Future plans

The previous recreation reserve master plan identified the opportunity for shared use of the toilets in the Scout building with cricketers who use the second oval. This opportunity was also identified in the current master planning process by scouts. However, it is recommended that options are explored with the Kialla Sports Club to improve access for cricketers to existing toilets located in the Community Centre or the Bowls Pavilion rather than to construct new change facilities in the Scout Hall.

13.12 Toilet Block



Usage

There is a brown brick toilet block located between the bowls area and the synthetic grass tennis courts, which is open on game days. It is maintained by Council as a 'sports use toilet'. Other toilet facilities at Kialla Park are located in the Community Centre, the bowls pavilion and the Scout Hall when these facilities are open. Feedback from many individuals and user groups indicate that the toilet facilities are not open very often. A better system needs to be implemented to ensure that

the toilet block is open during all sports training session and games at a minimum. One way to achieve this is for Greater Shepparton City Council to:

- Ensure that all regular and casual hirers of facilities at the reserve understand that it is their responsibility to open, close and clean the toilets during their training sessions / games (this needs to be written into hiring agreements / leases and discussed by telephone during the hiring process).
- Place a sign on the exterior of the toilet stating that user groups are responsible for opening and cleaning the toilet.

Recommendation:

Demolish the existing 'sports use toilet' at Kialla Park and develop new accessible toilets in the upgraded Community Centre that can be accessed from inside and outside the building by all.

13.13 Car Parks



oval number two

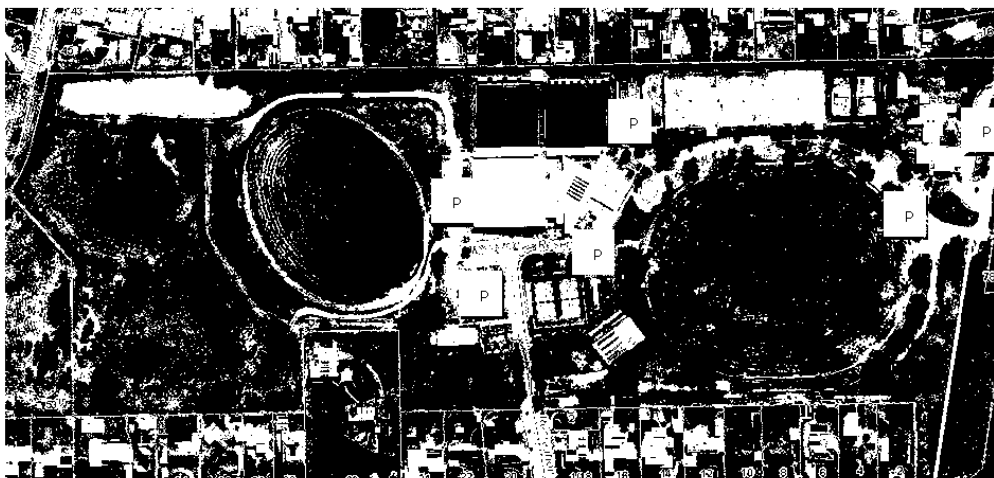
- Between tennis hard courts and oval number one.
- Along west side of bowls pavilion.

Eight designated accessible car parks are marked on the southern side of the bowls pavilion, and one in front of the Kialla Park Children's Centre. Informal parking occurs on the northern side of oval number one.

Location

There are six main car parking areas located at Kialla Park (as detailed in the diagram below):

- Along east side of Kialla Children's Centre
- On both sides of the road in front of Kialla Children's Centre and on the east side of oval number one
- Between synthetic grass tennis courts and lawn bowls rinks
- Between tennis hard courts and



Future plans

Overflow parking currently occurs near the scout hall and additional overflow parking could potentially occur to the south west of oval number two if events or multiple activities are held concurrently at the site (although this may be problematic in wet weather). To designate this area as an event parking areas, signs should be installed. Further, it should be made a condition that clubs / event managers must supply temporary traffic management infrastructure on site for major events parking, for example, signage / bunting / bollards.

The potential to develop additional parking at the site is limited, due to space restrictions. It is unlikely therefore that the reserve, as it is currently configured, could cater for large events due to limited parking opportunities. Future development of the site consequently needs to take parking into consideration. The previous Recreation Reserve Development Plan also noted that there is "insufficient parking to meet peak loads". For any major events at the site in the future, it would be ideal to suggest to attendees that they ride or walk wherever possible. However, for this to occur, there needs to be a good network of paths in existence, which are linked to key destinations such as Kialla Park Recreation Reserve, along with good public transport networks.

To improve access, a break in the curbing at the tennis / bowls car park needs to be provided so that people using mobility aids can manoeuvre themselves onto the footpath. Also, a break in the curbing in the bowls / scout car park is required to allow the Scouts to drive their trailer up to their shed.

Recommendations:

Make the following parking improvements at Kialla Park Recreation Reserve:

- Formalise parking along north and east side of oval number one – ensuring that no cars can park under trees (use bollards to protect trees).
- Decommission 17 car parks between the tennis courts and the bowls area to establish a picnic / BBQ area. Retain five car parking spaces next to the

Community Centre for accessible parking, pavilion deliveries, staff parking during the week and emergency access. Increase the size of the turning circle.

- Install bike parking racks near the Community Centre.
- Provide a break in the curb in the bowls and tennis car park to allow greater accessibility.
- Provide a break in the curb in the bowls car park to allow the Scouts to drive their trailer up to their shed.
- Develop staff car parking between the Kialla Children's Centre and the tennis courts.
- Develop more event parking near oval number two. Install signage to indicate the site of the event parking and make it a condition that clubs / event managers must supply temporary traffic management infrastructure on site for major events parking, for example, signage / bunting / bollards.

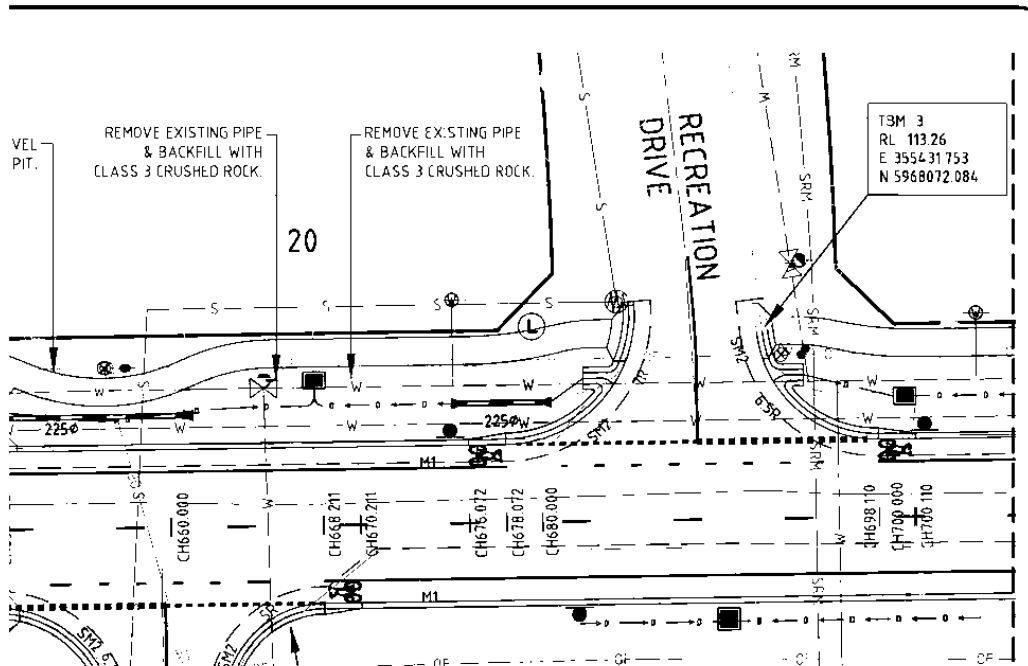
13.14 Entrances and Internal and External Roadways



Location and usage

There are two separate entrances to the reserve. One entrance comes off Reserve Street on the eastern boundary of Kialla Park (this is the service road running alongside the Goulburn Valley Highway) and the other entrance comes off Raftery Road on the southern boundary of the Park (on Recreation Drive). It is relatively easy for visitors to the site to miss the service road entry due to limited signage. At present, there is no connector road between each of the entrances, therefore if car parking is full in one area, users are

required to exit the reserve and drive around to the alternate entrance on a different road. Council has prepared draft plans to upgrade Raftery Road in the near future. This upgrade will include the marking of on-road cycling lanes on both sides of the road, the construction of a footpath on the reserve side of the road and the retention of the existing sign directing users to the reserve entrance (refer to diagram below).



All internal sealed roads at Kialla Park Recreation Reserve are in good condition. There are several service tracks around parts of oval number one and around oval number two which are not sealed and can become boggy when wet.

There are some zebra crossing markings to the south of the bowls pavilion.

Future plans

There is some concern about the speed of traffic entering the Reserve near the Kialla Park Children’s Centre. It is recommended that speed restriction signs, children crossing signs and additional speed humps are installed at strategic locations in this location to slow vehicular speed and improve safety for children and their parents / carers.

It is recommended that the Raftery Road / Recreation Drive entrance is promoted as the main entrance to the reserve in the future and that the entrance from Reserve Road be promoted as the tennis club and childcare entrance.

Recommendation:

Undertake the following road works at Kialla Park:

- Seal a roadway along the east side of oval number one, culminating in a turning circle in the south east corner of the reserve.
- Install traffic calming measures and speed restriction signs near the Kialla Park Children’s Centre.
- Install additional lighting along access roads, particularly Recreation Drive (ensuring that lights will not negatively impact on neighbouring properties).

- Install signage to guide users to relevant sections of the Reserve and promote Raftery Road as the main entrance.

13.15 Pedestrian and Cycle Access



Features and future plans

A shared, sealed off road path situated along Reserve Road service road provides access for pedestrians or cyclists from a southerly direction to access the eastern boundary of Kialla Park using active transport. This pathway, however, does not provide a clear link to areas north of the reserve. A zebra crossing across the Reserve Road entry would improve safety for pedestrians and cyclists.

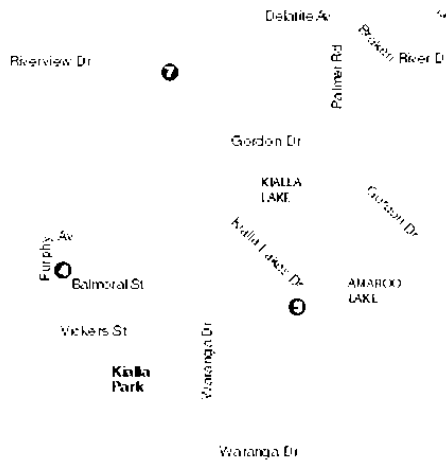
The planned Raftery Road upgrade will involve the development of on-road bicycle lanes as well as the development of a footpath along the northern side of Raftery Road. There are also plans detailed in Greater Shepparton City Council's Cycle Strategy to develop walking / cycling trails down Furphy Ave, through Kialla Park and then south along Seven Creeks Drive, although the exact alignment is not clear. Ideally Council will further investigate options to develop a continuous connection from Furphy Ave to Seven Creeks Drive via Kialla Park.

Recommendations:

Develop a shared cycling / walking path that connects Furphy Ave to Seven Creeks via Kialla Park. This may require further investigation by Council in terms of land purchases or swaps.

Identify and mark a clear route back towards the CBD for the shared cycling / walking path located on the western boundary of the reserve. Paint zebra crossing markings across the entrance road to the reserve in line with the alignment of the shared cycling / walking path so that drivers know to slow down and give way to cyclists and pedestrians.

13.16 Public Transport



Location and future plans

In terms of public transport access, the closest bus is the Number 8 Shepparton Kialla route, which travels south along Goulburn Valley Highway and turns into Vickers Street (one block north of Kialla Park). A bus stop located at the entrance of Kialla Park would improve accessibility, particularly for children who may be taking

part in tennis lessons or football training after school. Any new bus stop development should be promoted through the media, and particularly through existing clubs and organisations. At this stage, demand for a new bus stop is not known; hence further investigations need to occur.

Recommendations:

Discussions to occur between Greater Shepparton City Council and Department of Transport, Planning and Local Infrastructure to further investigate the need for a new bus stop at the entrance to Kialla Park Recreation Reserve. Greater Shepparton City Council to promote the site of the new bus stop to users of the Reserve and the broader community if developed.

13.17 Signage



Location and features

At the service road entrance to Kialla Park there are two fairly plain signs joined together that list the rules associated with using Kialla Park:

- “Vehicular traffic is limited to made roads and designated parking areas only.
- Dogs may be walked on this reserve outside times set aside for organised sports. Dogs must be under control and leashed at all times.
- Dog excrement must be removed

by the owner. Failure to do so is an offence under the EPA Littering Act and carries a fine.

- All formal use of this facility requires prior approval and booking through the Committee of Management. Council details for committees can be contained through the Council's Leisure Services department on 5832 9776.
- All hazards that are identified at this facility must be reported to the Council on 5832 9700".

The sign does not provide any indication of the type of activities available at Kialla Park. Grammar on the second sign needs to be addressed (i.e. replace 'contained' with 'obtained').

A sign at Recreation Drive indicates that lawn bowls, cricket, rugby and baseball are played at the site. This sign needs to be replaced as the last two sports listed are no longer based at Kialla Park.

There is a sign on the Kialla Park Community Centre which provides a contact telephone number for bookings. A notice board is provided within the key tennis shelter with details of results and upcoming events.

Other signs around the Park include:

- A more modern and well branded directional sign at the southern entrance of the bowls pavilion indicating the direction of the Shepparton Park Bowls Club and the Kialla Park Community Centre.
- A wooden sign outside the tennis courts with the wording 'Kialla Park Tennis Club. Est. 1982'.
- Signage on the Kialla Park Community Centre to notify people that AFL GV is a tenant, that no smoking is allowed in the facility; and that CCTV cameras are operational.
- A sign next to oval number one stating that no golf is allowed.
- A sign on the Kialla Park Community Centre noting that the facility is 'The Home of Kialla Cricket Club'.



Sponsorship signage

Sponsorship signage can be found on oval number one, on the external bowling rinks, inside the bowls pavilion, attached to the tennis court fences and shelter. In order to manage visual amenity and risk, it is recommended that Council develops a signage and sponsorship policy for recreation reserves.

Future plans

Ideally all signage should eventually be removed and replaced with consistent signage that represents the image and brand of Kialla Park. Signage similar to that found at Shepparton's Sports Precinct, i.e. cut out figurines of people playing various sports, would be ideal. It is also important to inform people of the informal recreational opportunities available on site too such as dog walking, cycling and running.

Recommendations:

Undertake the following in regards to signage at Kialla Park Recreation Reserve:

- Using appropriate signage (a large welcome sign that details activities available and directional signage), promote the Raftery Road entrance as the main entrance to the Reserve.
- Council to develop a municipal-wide sponsorship and signage policy which ensures consistency of branding.

13.18 Landscaping*Features and future plans*

Landscaping at Kialla Park varies between formal garden beds, such as those located near the entrance of the bowls facility, through to open grasslands, such as the area near the second oval.

To improve both the visual appeal of the site and to provide more shade for players and spectators, additional landscaping is required on site. It is recommended that more trees are planted around both of the ovals and

along the northern and southern boundaries of the reserve to provide a screen for neighbouring properties. Further, all garden beds need to be designed to minimise water use and maintenance requirements. Landscaping should be consistent throughout the reserve, providing an aesthetically pleasing environment. Improved landscaping will provide the local community with a sense of pride and promote a professional image to visitors of Council and club facilities.

Recommendation:

Undertake the following landscaping works at Kialla Park Recreation Reserve:

- Plant indigenous trees around the Reserve to provide shade for participants and spectators and to improve the visual amenity of the site.
- Trees to be planted beside the ovals, along the proposed shared pathway and around the perimeter of the Reserve (particularly to provide a barrier between homes and the reserve along the northern and southern boundaries).
- Garden beds near the community centre, the rear of the bowls facility and around the Childrens' Centre to be upgraded to ensure that they are visually attractive, yet low

maintenance and require little watering. Landscaping must be maintained by the responsible body to improve the overall amenity and visual appeal of the reserve.

13.19 BBQs / Picnic Areas



Location

There are two public BBQs available at Kialla Park. One is located next to oval number one and features a shelter, two picnic tables, a bin and a BBQ. The other BBQ is situated near the lawn bowls rinks and the bowls undercover facility. There is also a picnic table near the synthetic grass tennis courts.

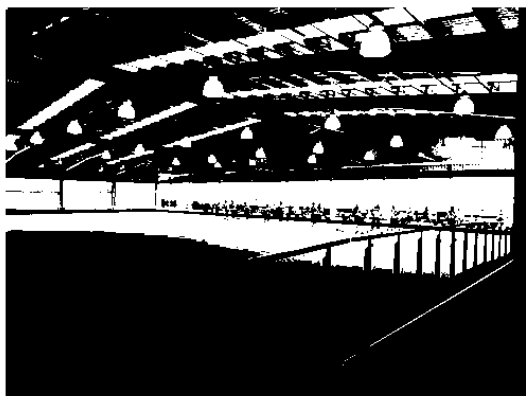
Future plans

It is recommended that a water fountain is installed at Kialla Park close to sporting facilities and informal recreational areas to enable users of the reserve to have a drink or refill their water bottles. Availability of drinking water at all times should be a priority of the park as a means to encourage healthy eating / drinking and also as a way to potentially reduce littering from soft drink bottles. Hydration after exercise is also important to restore fluid levels.

Recommendation:

Once outside toilets are demolished and replaced within the pavilion, relocate BBQ / picnic area next to play area and install a drinking fountain along with accessible paths from the car park and pavilion to this area.

13.20 Electrical Supply



Power supply

Power to Kialla Park is provided by Powercor. It is understood that the power enters the site from the Raftery Road boundary. There is a substation located on the east side of the Scout Hall and the Kialla Park Children's Centre also has its own supply connection at the north east corner of the Reserve. It is also understood that there is no power supply to the western part of the

reserve. The site currently has adequate supply for its current level of usage, however, Powercor Australia⁴ has advised that if new lights are to be installed on oval number one, an electrical contractor needs to assess:

- “the size and rating of the existing private mains cables between the substation pole and the main switchboard;
- the options to create additional C.T. metering enclosure (for the Community Centre) and redirect either existing circuit mains or run new circuit mains. This tenancy will likely need to have a 160 or 200amp CB main switch fitted as well.”

13.21 Water Supply and Drainage

Water supply and drainage



Goulburn Valley Water is the responsible water authority for Kialla Park. Water for Kialla Park is piped from the Goulburn River, down Raftery Road and then down Recreation Drive before being stored in a dam near the second oval. A pump house is located near the water storage dam. As water is required for irrigation purposes, it is pumped directly from the water storage dam. Town water is used in the buildings on site and around the BBQ area. Greater Shepparton City Council

is responsible for managing and maintaining all of the pumps and associated infrastructure. Should the area to the west of oval number two be developed for sports or activities requiring irrigation water, an assessment of the capacity of the water storage dam and availability of water in general will need to be undertaken.

At present, there is sufficient water available for the needs of the Recreation Reserve, providing that the water is used in a sustainable manner and assuming no long term drought conditions. In order to provide some level of security in times of future droughts, it is recommended that water saving devices and practices are utilised wherever possible, e.g. planting of drought tolerant grasses, capture and re-use of rainwater from buildings, low flow showers, etc.

The main drainage for the site occurs on the northern boundary via an old supply channel. This drain tends to block quite easily. Another area where drainage is an issue is the south east corner. It is recommended that when oval number one is redeveloped, drainage improvements occur to the south east corner of the site at the same time.

⁴ Powercorp correspondence dated 15 May 2014. Reference Number: 500000200849

13.22 Storage



Whilst user groups store as much of their equipment as possible within buildings, some additional equipment is stored by AFL Goulburn Murray in a shipping container on site near the hard tennis courts and by bowls in a shipping container near their bowls green. These shipping containers are considered by some reserve users as an eyesore.

Shipping containers

Future plans

Recommendation:

Remove existing shed and shipping containers.

13.23 Open Space



Location, usage and demand

There is a large area of undeveloped open space on the western edge of Kialla Park Recreation Reserve. In the past, this has been earmarked for an additional junior oval. At present, there is not sufficient demand for an additional oval, particularly given the space available at the Shepparton Sports Precinct, the current low level of use on the second oval at the Reserve and the likelihood that an additional grass playing field will be

constructed at nearby Kialla West Recreation Reserve, according to the Sport 2050 Plan. There is already a junior sports field at Kialla Primary School and should a secondary school be built in Kialla in the future, it is also likely to have a multi-purpose sports field.

Future plans

However, given the growth in individual sport and recreation activities such as walking, cycling, fitness, etc, this area could be developed into a passive or informal recreation space incorporating features such as an obstacle or parcourse, a disc Frisbee golf course, traversed by a cycling / walking / running track. Alternatively it could also be utilised as an off leash dog park and a community garden. However, from a safety and design perspective, the fact that this area has limited passive surveillance opportunities means that it may be subject to vandalism and some people may feel uncomfortable using the site.

Discussions occurred during the project regarding purchasing a parcel of land owned by the Roman Catholic Trust adjoining the western boundary of Kialla Park Recreation Reserve. This was also suggested in Greater Shepparton's Sport 2050 Plan. The cost of this land is estimated to be approximately \$400,000. The benefit of purchasing this land is that it would enable a cycle path to easily connect from Furphy Ave to Raftery Road and on to Seven Creeks Road, without having to back track significantly through the Reserve. Alternatively, it may be possible to implement a land swap arrangement with the Roman Catholic Trust. Once again, the lack of home frontages and passive surveillance poses a challenge to the use of this land.

Recommendation:

Redevelop the area of open space near oval number two for informal recreation purposes.

14.0 Management and Maintenance

14.1 Management

Kialla Park Recreation Reserve is currently managed by a number of different entities. Greater Shepparton City Council manages the recreation reserve grounds, drainage, signage and roadways. It takes bookings for the ground and maintains the toilet as a 'sports use toilet'. Other user groups lease facilities from Council and may allow other organisations to hire facilities from them for a fee. It is recommended that this management system continues, but that all user groups meet twice per year to discuss issues of mutual interest concerning Kialla Park.

14.1.1 Community Centre

The community centre at Kialla Park Recreation Reserve is managed by Kialla Park Community and Sports Club, an incorporated body. This incorporated body only has responsibility for the hall, tennis facilities and cricket club facilities. There is no representation from bowls, scouts or the children's centre on its committee. The committee has not charged players a membership fee for several years; however plan to charge an annual fee of \$20 per senior player in the near future to assist with maintenance and capital costs.

Membership of the Sports Club, social activities and bookings have declined significantly since bowls facilities were established in 2010.

Operational funds are derived from bookings (i.e. Probus once per month, music once or twice per week and boot camps once per week). The tennis and cricket clubs use the facility for afternoon teas; however, if a wedding or party is booked, they are not able to access the facility. AFL Goulburn Murray has assumed responsibility for bookings of the facility, including set ups and clean ups. It is keen to establish a more formal management arrangement, with monetary returns.

A new committee was appointed towards the end of 2013 and has committed itself to addressing governance and marketing issues. In the long term, members of the committee would like to pay an administrator to manage the facility.

14.1.2 Management Organisations

Management arrangements for other facilities at Kialla Park Recreation Reserve are as follows:

- Shepparton Park Bowls Club – Greater Shepparton City Council owns the facility and leases it to the bowls club. The bowls club is responsible for managing the facilities that it leases.
- Kialla Park Tennis Club – courts are owned by Greater Shepparton City Council and leased to Kialla Park Community and Sports Club. The club is responsible for maintaining the tennis courts.
- Kialla Scout Group – Scouts owns its own building and pays a lease to Greater Shepparton City Council. The scouts group is responsible for managing the facilities.
- Kialla Park Children's Centre – Greater Shepparton City council owns the building and the centre is an incorporated body which is run by a committee. It is responsible for managing its own facilities. The Centre pays an annual lease to Council.

- Kialla Knights Cricket Club Oval is owned by Greater Shepparton City Council and leased to Kialla Park Community and Sports Club. The club is responsible for maintaining oval.

14.1.3 Strategic Direction

In order to operate successfully and sustainably in the future, it is important for Kialla Park Community and Sports Club Inc., individual clubs and all other individual committees of management to have or to develop:

- A vision for its future
- Strong leadership
- Strong governance structures with succession planning in place
- Appropriate plans in place to guide operations, e.g. business plan, annual plan, operational plan, maintenance plan, replacement schedule
- Appropriate policies in place to guide decision making, e.g. hiring agreements, sponsorship guidelines, etc
- Risk management policies and procedures, e.g. fire, working with children, insurance, etc
- Identified and addressed all health, safety and regulatory requirements, e.g. food handling regulations, sports field dimensions, etc
- Regular evaluation processes
- Effective two-way communication with stakeholders
- A focus on providing quality customer service
- A good understanding of the needs and expectations of participants and potential participants
- Strong networks with other relevant partners, e.g. Greater Shepparton City Council, schools, state sporting associations and other community groups
- A welcoming environment where people of all abilities and ages are encouraged to participate
- A range of programs to attract both competitive and casual / social players
- Well run competitions and events
- Well managed and maintained facilities and equipment
- Sufficient volunteers to assist with tasks
- Effective volunteer / staff recruitment, management and retention processes in place
- Sufficient funds to meet operational expenses
- Sufficient funds set aside to maintain and replace facilities and infrastructure
- A low environmental footprint.

Ideally a combined committee with representation from all user groups at the Recreation Reserve (including a community and a Greater Shepparton City Council representative) would be established and would meet several times each year to discuss common issues, such as accessibility, security issues, toilet access, signage, parking, roads, etc. This group would also be responsible for progressing the priorities identified in the Master Plan.

Recommendation:

Greater Shepparton City Council to establish a user group comprised of community and Council to meet several times each year to discuss common issues at Kialla Park, e.g. facility development, parking, security, etc. This group will support the implementation and evaluation of the master plan.

14.2 Maintenance Roles and Responsibilities

Maintenance of the sports fields at Kialla Park Recreation Reserve is carried out by the Greater Shepparton City Council.

Typical maintenance requirements for Kialla Park Recreation Reserve include:

Mowing playing fields (usually once per fortnight)	Cricket wicket preparation
Fertilisation of ovals twice per year	Litter collection
Aeration of ovals twice per year	Cleaning, painting and carrying out of basic repairs to built structures including buildings, fences, gates, seats, etc for areas that are leased
Weed control once per year to reduce broadleaf weeds	Graffiti removal on leased structures
Promote growth of couch in spring	Affixing sponsorship signage to fences
Over-seeding with rye grass each autumn for winter cover	Repairs to hot water systems
Strategic top dressing every 2-3 years	Minor repairs, e.g. hot water systems, heating / cooling systems and kitchen equipment
Cleaning, painting and carrying out of basic repairs to built structures including buildings, fences, gates, seats, etc for areas that are not leased.	Inspections of sports facilities, playground and surrounds on a regular basis (as determined by Greater Shepparton City Council and sporting bodies, based on their risk exposure in terms of safety; asset preservation and community / legal expectations).
Toilet maintenance and cleaning	
Playground maintenance	
Tree / garden maintenance	
Replacement of lights	
Repairs to internal roadways	
Pest control	
Graffiti removal on non-leased structures	
Fixing of blocked / corroded drains	