

Greater Shepparton BEST START EARLY YEARS PLAN 2020-2025



CONTENTS

| | |
|---|-----------|
| Message from the Mayor | 4 |
| Introduction | 5 |
| What we know | 6 |
| • The Importance of the Early Years – First Thousand Days | 6 |
| • Investment in the Early Years is critical | 6 |
| • The Greater Shepparton Demographic and Community Profile | 8 |
| • Community consultation | 10 |
| • Learnings from the BSEYP 2015-2019 | 10 |
| • The State of Greater Shepparton's Children Report 2019 | 10 |
| • Progressive Universalism | 11 |
| • State and National Policy Context | 11 |
| What we will do | 12 |
| • Theme 1: Play | 14 |
| • Theme 2: Learn | 16 |
| • Theme 3: Thrive | 18 |
| • Theme 4: Voice | 20 |
| • Theme 5: Share | 22 |
| Who will lead the way? | 24 |
| • The Greater Shepparton Best Start Early Years Partnership | 24 |
| • Council's role in the Early Years | 24 |
| • Evaluation | 25 |
| Acknowledgements | 26 |
| Definitions | 28 |
| References | 29 |
| Appendixes | 30 |

Acknowledgement of Traditional Owners

We, Greater Shepparton City Council, acknowledge the Traditional Owners of the land which now comprises Greater Shepparton. We pay respect to their tribal Elders, we celebrate their continuing culture and we acknowledge the memory of their ancestors.

Message from the Mayor

As the Mayor of Greater Shepparton and Chair of the Best Start Early Years Partnership, I am very pleased to present the Greater Shepparton Best Start Early Years Plan 2020-2025.



Greater Shepparton is a culturally rich and diverse community, boasting a population in excess of 65,000 and home to the largest Indigenous population outside of Melbourne. We are a family friendly municipality and pride ourselves on the wonderful facilities, attractions, services, education and employment opportunities that make our city a great place for families to live.

While we celebrate the many assets and strengths of our community, we also acknowledge the challenges and barriers some families experience. We understand the need to respond and act to support families, services and community so children have the opportunity to reach their full potential.

This new plan outlines five priority areas and a number of key outcomes of where our community needs to take action if we are to improve outcomes for our children. This will be achieved with the support of local service providers, community members and most importantly a child's family.

The extensive research around the importance of investment in the early years is now unquestionable – we must invest as a community, as a society, if we are to make long term change.

I would like to thank and congratulate all who have been involved in the development of this new plan. The Best Start program has now been in operation since 2003 and this is our fifth combined strategic plan (Best Start and Municipal Early Years Plan).

We are excited about the way forward with this new plan and continuing to prioritise and advocate for our most precious asset - our children.

Cr Seema Abdullah,

Chair of the Greater Shepparton Best Start Early Years Partnership

Mayor of Greater Shepparton

Introduction

Greater Shepparton is committed to ensuring every child within the municipality is provided the optimal opportunity to thrive. As the ARACY (Australian Research Alliance for Children and Youth) Nest vision for children highlights, this means:

'All young people are loved and safe, have material basics, are healthy, are learning and participating, and have a positive sense of identity and culture.'

Greater Shepparton City Council plays a critical role in the investment and delivery of services and recreational opportunities in our municipality. By working in partnership with the community, families, children and key stakeholders, Council will provide high quality, responsive and innovative services and programs that support children to thrive.

There are three major ways of achieving this:

- Council's Direct Delivery of Early Years Services such as Maternal and Child Health, playgroups, kindergartens and childcare.¹
- Council involvement in other facilities/activities/ programs for children such as playgrounds, walking and bike tracks, Children's Week and Activities in the Park.

- Council's lead role in coordinating planning and service development in the interests of children through its Best Start Program and the Best Start Early Years Plan.
- Council's ongoing collaboration and partnership with lead agencies in Greater Shepparton to help deliver programs for families.

This new Best Start Early Years Plan 2020-2025, hereinafter referred to as the Plan, has been created through consideration of what we know – what expert research and evidence says about the needs of children, what we know about how children are faring here in Greater Shepparton, and what our local experts say we can be doing into the future to assist and support all children to thrive.

While the Plan covers children aged 0 to 6 years, there is a particular focus on the ages of 0 to 3 when brain development and growth is at its most rapid and the foundations for future skill acquisition are laid.

Actions to achieve what we hope for the future are built around the 5 themes of PLAY, LEARN, THRIVE, VOICE and SHARE.

¹Please note Greater Shepparton City Council is not the only provider of playgroups, childcare and kindergartens



WHAT WE KNOW

The Importance of the Early Years – The First Thousand Days

The First Thousand Days – the period from conception to the end of a child's second year – is the period of the greatest developmental plasticity, and what happens during this time can have life-long consequences for health and wellbeing.

The Centre for Community Child Health developed an evidence paper summary in September 2017 titled 'The First Thousand Days' which examined the impact of early experiences on all aspects of development and functioning; including health and wellbeing, mental health, social functioning, and cognitive development. The paper acknowledged that the Australian public's understanding of the significance of the first 1000 days is limited, despite the growing focus and evidence on the importance of this period of a child's life, and that it should be a key issue for all levels of Government.

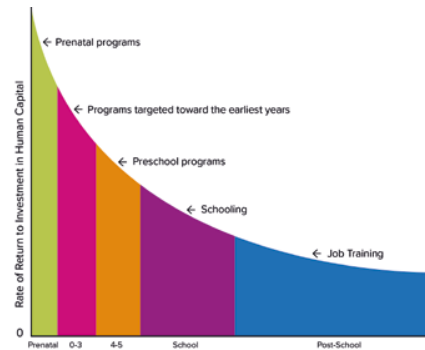
To ensure this remains our core focus the BSEYP 2020-2025 will use 'The First Thousand Days' document as its guiding framework. We believe it is part of our role to increase the knowledge and understanding of this critical growth period amongst parents, carers, service providers and community.

A number of key messages were highlighted in the summary paper, one of the most powerful being, 'what is undisputed is that reversing early adverse adaptations or inheritances gets progressively harder after the first 1000 days. While it is never too late to make changes, the first and best opportunity we have to build strong foundations for optimal development is during the first 1000 days'.²

Investment in the Early Years is critical

EARLY CHILDHOOD DEVELOPMENT IS A SMART INVESTMENT

The earlier the investment, the greater the return



Source: James Heckman, Nobel Laureate in Economics

This graphic shows that the highest rate of economic returns comes from the earliest investments in children, providing an eye-opening understanding that society invests too much money on later development when it is often too late to provide great value. It shows the economic benefits of investing early and building skill upon skill to provide greater success to more children and greater productivity and reduce social spending for society.³

² Centre for Community Child Health, The First Thousand Days: A evidence paper summary, September 2017

³ Heckman Equation – <https://heckmanequation.org/resource/the-heckman-curve/>



The Greater Shepparton Demographic and Community Profile

In 2016 in Greater Shepparton : ⁴

- 4218 residents were aged 0 to 4 years (6.6% of the population)
- 4377 residents were aged 5 to 9 years (6.9% of the population)
- The Aboriginal and Torres Strait Islander census population was 2180, of which 249 were children aged 0 to 4 years
- 9503 people were born overseas
- 14.6% of people spoke a language other than English at home
- 27.8% of households were made up of couples with children
- 26,978 people were employed, of which 60% worked full-time and 37% part-time
- The unemployment rate was 6.4%
- Our SEIFA index was 948

Aboriginal and Torres Strait Islander population

Greater Shepparton is proud to have a strong Aboriginal heritage. Around 1.6 percent of people in our municipality identified as Aboriginal in the 2016 Australian Bureau of Statistics Census. However, as documented in the Greater Shepparton Public Health and Wellbeing Strategic Plan 2018-2028, anecdotal evidence suggests that this is very under-represented, and the actual Aboriginal population for Greater Shepparton is nearly three times this, with a population of nearly 6,000. ⁵

Cultural diversity

Shepparton has one of the largest rural settlement populations in Victoria. We are also proud of Shepparton's long migration history dating back to World War 1 which has resulted in a rich diverse community made up of over 30 nationalities from diverse cultural backgrounds including humanitarian entrants, family stream

migrants, dependants of skilled migrants and prospective marriage and provisional partner visa holders and their dependants. More than 50 languages are spoken in the region. Almost 1,300 new arrivals from multicultural backgrounds settled in Greater Shepparton between 2013 and 2017. ⁶ The municipality's population is anticipated to 75,700 persons by 2030. A significant number of residents are anticipated to be from culturally diverse backgrounds (Greater Shepparton Council, 2018).

Multicultural organisations in Greater Shepparton that work closely with the various communities are committed to promoting cultural diversity in our region and strengthen the sustainability and culture of communities which reside in the area.

SEIFA

Greater Shepparton had a SEIFA score of 948 in 2016 and ranks in the bottom 20% of municipalities in Victoria in terms of disadvantage for families. ⁷

SEIFA, developed by the Australian Bureau of Statistics, ranks areas in Australia according to relative socio-economic advantage and disadvantage. The average for Australia is a score of 1000. SEIFA scores are expressed on a scale where lower numbers always mean more disadvantage and less advantage, while higher numbers mean less disadvantage and more advantage.

Australian Early Development Census

Greater Shepparton now has five sets of AEDC data (2008, 2009, 2012, 2015 and 2018), including a specific Aboriginal Community profile (2008 and 2018) and Culturally and Linguistically Diverse Community Profile (2018). The AEDC is a measure of how well a community has supported the development of children prior to school entry.

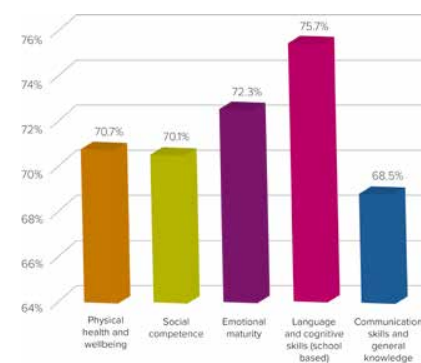
In the 2018 data collection, 904 children were assessed in their first year of formal schooling. Of these, 30.8% of children were considered developmentally vulnerable on one or more domains, and 19.4% were considered vulnerable on two or more domains (a 'significant increase' from the 2015 results).

This is concerning data for Greater Shepparton.

Over a 10 year period our municipality has seen an increase in the number and percentage of children considered developmentally vulnerable. Recent forums and workshops have identified the need for a whole of community response to these results. This Plan aims to respond to our most recent results and aims to increase the percentage of children 'on track' by the 2024 collection. ⁸

The graph below shows the percentage of children 'on track' in each of the five domains for 2018, and is our baseline measurement for this Plan.

% 'ON TRACK' IN 2018



Families

Families are diverse. Often when we think of families, the traditional nuclear and extended family may come to mind. But the meaning of family is multifaceted, and can have more to do with relationships, emotional bonds, connections and values than it does with people who we are biologically related to.

For the purpose of this Plan, we identify a family unit to be made up of anyone a person considers to be 'their family.'

⁴ 2016 ABS demographic data for Greater Shepparton

⁵ Greater Shepparton Public Health and Wellbeing Strategic Plan 2018-2028

⁶ Department of Social Services 2018

⁷ City of Greater Shepparton Community Profile. Profile.id

⁸ Greater Shepparton AEDC Community Profile 2018



Community Consultation

To assist in the development of this Plan we have drawn on consultation undertaken by Communities for Children and the Greater Shepparton Lighthouse Project.

The '1000 Conversations' conducted in 2018 by The Lighthouse Project was the second round of consultation with community members. Key insights and feedback from people included the need for:

- Parents and carers who are actively involved and whom feel supported and empowered to provide the best care and support they can
- Meaningful educational experiences with educators who genuinely care, tailored learning approaches and a space free from bullying
- A safe and stable environment with access to shelter, healthy food, hygiene and medical assistance
- Access to extracurricular activities that build social connection

Communities for Children consulted with the local aboriginal community to better understand some of the barriers and enablers experienced by families when accessing or utilising early years services. Transport, days and times of operation, feeling welcomed by staff and valuing culture was some of the feedback obtained.

Learnings from the BSEYP 2015-2019

- Strong interagency relationships are the core of progressing initiatives and achieving change
- Communication and information sharing between universal, secondary and tertiary services to support vulnerable children and families has improved but there is still much work to be done
- There is an urgent need to collectively respond to the AEDC 2018 results
- More concentrated effort in micro communities has been beneficial to trial or test strategies before scaling up across services

The State of Greater Shepparton's Children Report 2019

The State of Greater Shepparton's Children Report was first developed in 2014, bringing together a broad range of publicly available data related to the key health indicators of health, education, development and wellbeing of children in our community aged 0 to 18 years. The report is a partnership between Best Start, Communities for Children and The Lighthouse Project.

The second edition looks at the same data sets (where available), and presents the data in a way that shows whether Greater Shepparton is doing better or worse in relation to Victorian key indicators. This report is a most valuable resource for key stakeholders and our community to better understand how our children are developing and faring in a number of different areas.

Progressive Universalism

Progressive Universalism – a continuum of child needs and service integration



Original concept: www.everychildmatters.gov.au – now archived
Adapted by Greater Shepparton Best Start Team November 2014

Acknowledged in the previous plan as a way to foster a more integrated service continuum between universal, secondary and tertiary services, the progressive universalism concept highlights the importance of having a focus on all children. This notion has been reinforced and supported by the Partnership after review of our most current AEDC results. While greater resources and more intensive support is required for those children and families with complex needs and a higher level of vulnerability, it is critical we do not lose sight of those currently 'on track' within the universal service system, and support these children and families to continue to thrive

State and National Policy Context

A number of key policy and research documents have been considered in the development of the Greater Shepparton Best Start Early Years Plan 2020-2025. These include:

- Victorian Early Years Learning and Development Framework 2016 (revised)
- Belonging, Being and Becoming – The Early Years Learning Framework for Australia 2010
- Early Childhood Reform Plan 2017
- Roadmap for Reform Strong Families Safe Children
- Victoria's Vulnerable Children Our Shared Responsibility 2013-2022
- Supporting Children and Families in the Early Years – A Compact between DET, DHHS and Local Government 2017-2027
- The First Thousand Days – Centre for Community Child Health
- National Quality Standards (NQS)

WHAT WE WILL DO

The outcomes included in this Plan are guided by what expert evidence says about the needs of children, what we know about how children are faring here in Greater Shepparton, and what our local experts say we can be doing in the future to assist all children to thrive. They are set out under five key themes of PLAY, LEARN, THRIVE, VOICE AND SHARE.

It is important to acknowledge the good and promising work already happening in Greater Shepparton, the strength of the early years service system, the many wonderful child and family friendly facilities and activities available and the professional partnerships that exist between service providers. It is also imperative to recognise the need for change. Our AEDC data tells us that we need to think differently and critically about early years development, investment and partnerships if we are to achieve improvement.

The BSEYP 2020-2025 will be underpinned by an Early Years Action Plan which will be developed through consultation with the community and key stakeholders to determine the best ways to achieve the outcomes set out under Play, Learn, Thrive, Voice and Share. The Early Years Action Plan will be a living document, giving the Partnership and workgroups the ability to respond to the current and emerging issues that impact on the lives of our children, families and service system.



THEME 1: PLAY

‘Children need the freedom and time to play. Play is not a luxury. Play is a necessity’

Kay Redfield Jamison

Outcome 1.1 – Children and families engage and participate in playgroups

Outcome 1.2 – Children and families are active and playing together

Measures of Success

- A minimum increase of 3% for children 'on track' in the Physical Health and Wellbeing AEDC domain by 2024
- A minimum increase of 3% for children 'on track' in the Social Competence AEDC domain by 2024
- Increased number of children meeting the daily physical activity requirements



THEME 2: **LEARN**

'The goal of early childhood education should be to activate the child's own natural desire to learn

Maria Montessori

Outcome 2.1 – Children engage and participate in early childhood education (Best Start outcome)

Outcome 2.2 – Families are supported to have the knowledge, skills and confidence to be their child's first educator

Outcome 2.3 – Children have access to the supports they need to ensure active engagement in learning

Measures of Success

- 100% of children have a kindergarten year before they attend primary school
- A reduction in the percentage of children identified as vulnerable in their kindergarten year
- A minimum increase of 3% for children 'on track' in the Language and Cognitive skills AEDC domain by 2024
- A minimum increase of 3% for children 'on track' in the Communication Skills and General Knowledge AEDC domain by 2024



THEME 3: **THRIVE**

'A child's life is like a piece of paper on which every person leaves a mark'

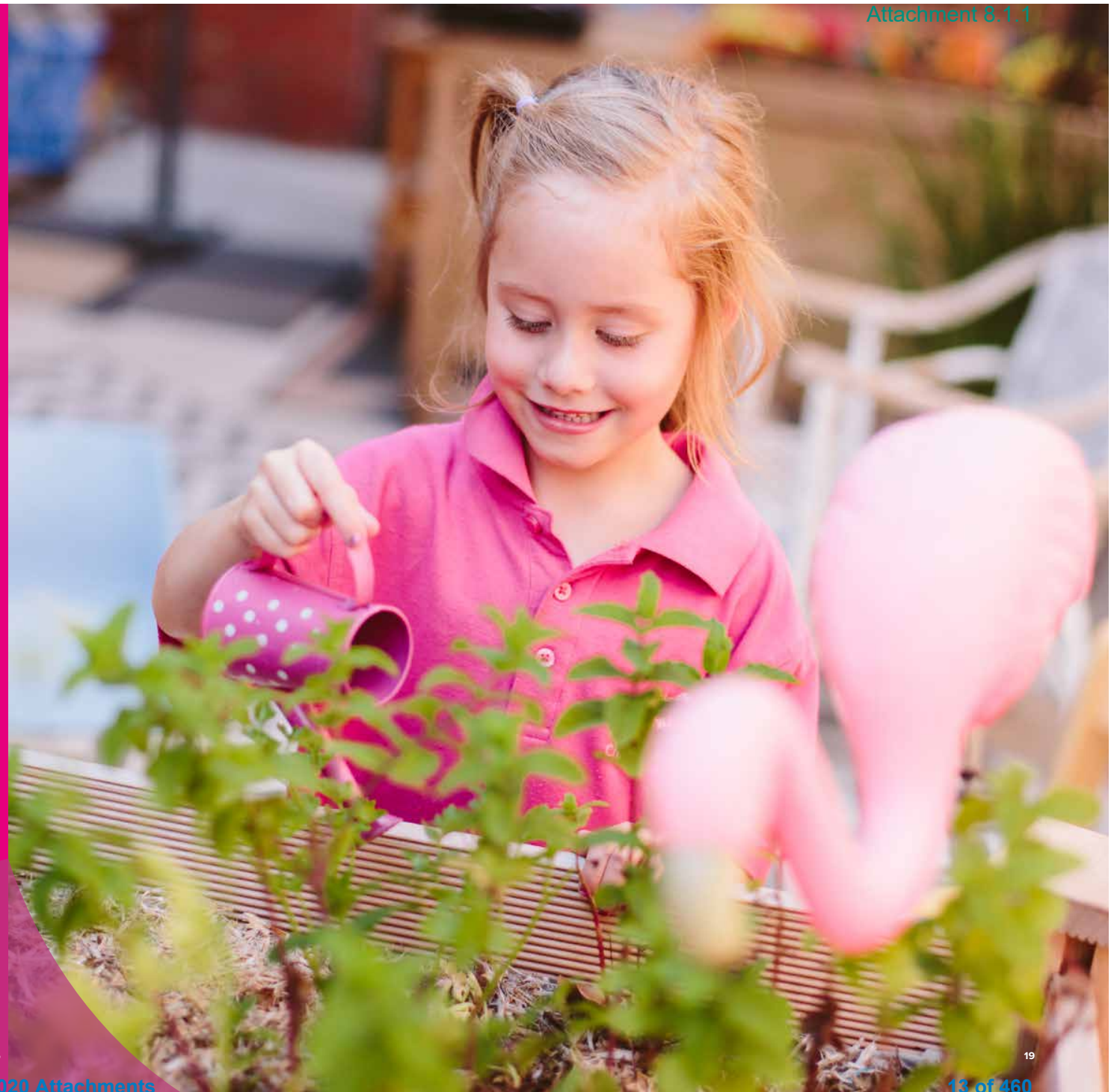
Robert A. Heinlein

Outcome 3.1 – Children and families actively engage with Maternal and Child Health services, attending key ages and stages visits (Best Start outcome)

Outcome 3.2 – Our community is supported to fully understand the critical importance of the First Thousand Days

Measures of Success:

- Maintain and increase the percentage of completed MCH key age and stage visits
- Closing the Gap - a reduction in the gap between MCH attendance rates for Aboriginal children and non Aboriginal children
- Staff have the knowledge and skills to identify and respond to vulnerability factors
- A minimum increase of 3% for children 'on track' in the Emotional Maturity AEDC domain by 2024



THEME 4: VOICE

'If you want your children to be intelligent, read them fairy tales. If you want them to be more intelligent, read them more fairy tales'

Albert Einstein

Outcome 4.1 – Children have the language skills required for optimal learning

Outcome 4.2 – Consultation and feedback is sought from families and children to inform early years planning and development

Measures of Success:

- A minimum increase of 3% for children 'on track' in the AEDC Language and Cognitive skills domain by 2024
- A minimum increase of 3% for children 'on track' in the AEDC Communication Skills and General Knowledge domain by 2024



THEME 4: **SHARE**

Children are human beings to whom respect is due, superior to us by reason of their innocence and of the greater possibilities of their future'

Maria Montessori

Outcome 5.1 – Further community engagement and response to the AEDC

Outcome 5.2 – Our community has a shared responsibility for its children

Measures of Success:

- 100% of primary schools with Foundation students participate in the 2021 and 2024 AEDC data collection
- A reduction in the percentage of children developmentally vulnerable on one or more domains by 2024



WHO WILL LEAD THE WAY?

The Greater Shepparton Best Start Early Years Partnership

The Greater Shepparton Best Start Early Years Partnership is recognised as the local 'expert' early years body and is responsible for the overall governance of the Plan. Greater Shepparton City Council remains responsible for the endorsement of the Plan and is the fund holder for the Best Start program. Advocacy is a key role of the Partnership, bringing to the table a number of major issues that impact on our community.

The Partnership is supported by a number of workgroups and reference groups. The expertise, knowledge and skills of members provides significant influence and provides a voice for our early years. Membership includes parents, community members, service, education, health, government and Council representatives and collectively they drive the work of the Best Start Early Years Plan to make Greater Shepparton a great place for children and families to have a voice, play, learn, share and thrive.

Council's role in the early years

Greater Shepparton City Council plays a critical role in the planning and delivery of early years services for our community. Under the Local Government Act Victoria (1989), a Council's role is to:

- Facilitate the involvement of community members and council staff in the development, improvement and coordination of Local Government
- Coordinate with other public bodies to ensure that services and facilities are provided and resources used effectively
- Ensure adequate planning for the future of its community in the municipal district
- Represent and promote the interests of the community and to be responsive to the needs of the community

Early Years Services managed and offered by Greater Shepparton City Council include:

- Maternal and Child Health
- Kindergarten – Year Before School and Pre Kinder
- Kindergarten Central Registration
- Early Start to Kindergarten
- Long Day Care
- Occasional Care
- Family Day Care
- Supported Playgroups

Other programs, services and facilities for families provided or managed by Council include:

- Library services
- Playgrounds
- Bike and walking tracks
- Aquamoves
- Activities in the Park program

This level of investment in service provision is considerable, given other Local Governments have limited involvement in the direct service delivery of family and children's services. It also places Greater Shepparton City Council in a prime position to influence and drive positive change in the way universal services operate, collaborate, communicate and deliver programs to best meet the cultural and diverse needs of the community.

There is also opportunity to partner or work with some of the other great programs and initiatives happening in Greater Shepparton to progress the work of the Plan.

Evaluation Framework

How will we know if we have achieved what we have set out to achieve?

There will be regular reflection, adaptation (if necessary) and reporting undertaken by the Partnership and relevant workgroups to track progress against the strategies and actions set out in the Early Years Action Plan, and the Measures of Success documented under the five themes of the BSEYP. Annual reporting to Council and the community will also occur. The availability of service and community data will be pivotal to evaluation, with the acknowledgement that while some determinates of success will be accessible yearly, others are only available every three to four years (e.g. AEDC).

The Best Start program uses the Model for Improvement framework, consisting of an annual Program Logic and Plan Do Study Act cycles to test and measure small changes or improvements linked to short term outcomes.⁹

MODEL FOR IMPROVEMENT: 'The implimenting part' (PDSA cycles)



It also needs to be acknowledged that there are many other projects and programs that are undertaking promising work in similar areas, and that success within this Plan can be contributed to the various initiatives, programs and plans working collectively.

⁹Developed for Best Start sites by the Centre for Community Child Health



ACKNOWLEDGEMENTS

Many thanks to those who have been involved in the development of the Greater Shepparton Best Start Early Years Plan 2020 – 2025.

We thank you for your time, feedback and commitment to making Greater Shepparton a great place to live.

*Working together for the children
and families of Greater Shepparton*

DEFINITIONS

ABS – Australian Bureau of Statistics

AEDC – Australian Early Development Census

ARACY – Australian Research Alliance for Children and Youth

BSEYP – Best Start Early Years Plan

DET – Department of Education and Training

DHHS – Department of Health and Human Services

ESK – Early Start to Kindergarten

GSCC – Greater Shepparton City Council

MCH – Maternal and Child Health

SEIFA – Social Economic Indexes for Areas



REFERENCES

Australian Research Alliance for Children and Youth (ARACY). (2014). The Nest action agenda: Improving the wellbeing of Australia's children and youth while growing our GDP by over 7%. ARACY, Canberra, Australia. Retrieved from <http://www.aracy.org.au/documents/item/162>.

Australian Government. (2018). Australian Early Development Census Community Profile Greater Shepparton 2018. Retrieved from www.aedc.gov.au

City of Moonee Valley. Moonee Valley Early Years Plan 2014-2022: People, Places and Partnerships for Children. Family and Children's Services Department. Retrieved from <http://www.mvcc.vic.gov.au>

Communities for Children, Greater Shepparton City Council and Greater Shepparton Lighthouse Project. (2019). The State of Greater Shepparton's Children Report 2019. Retrieved from <https://www.gscclighthouse.com.au/state-of-greater-sheppartons-children-report-2019>

Council of Australian Governments. (2010). BELONGING, BEING AND BECOMING: The Early Years Learning Framework for Australia.

Department of Education and Training (2016). Victorian Early Years Learning and Development Framework – For all children from birth to eight years. Revised version, 2016. Treasury Place East Melbourne, Victoria.

Department of Education and Training. (2017). Early Childhood Reform Plan. Treasury Place East Melbourne, Victoria.

Department of Education and Training, Department of Health and Human Services and Municipal Association of Victoria. (2017). The Early Years Compact: Supporting children and families in the early years. Retrieved at <https://www.education.vic.gov.au/about/educationstate/Pages/theearlyyearscompact.aspx>

Department of Human Services (2013). Victoria's vulnerable children – our shared responsibility. Baseline performance data report. Retrieved from <http://www.dhs.vic.gov.au/about-the-department/documents-and-resources/reports-publications/victorias-vulnerable-children-our-shared-responsibility>

Department of Health and Human Services. (2016). Roadmap for Reform: strong families, safe children. Retrieved from <https://www.dhhs.vic.gov.au/publications/roadmap-reform-strong-families-safe-children>

Greater Shepparton City Council. (2017). Greater Shepparton Public Health and Wellbeing Strategic Plan (2018-2028). Active Living Department. Retrieved from http://greater-shepparton.com.au/assets/files/documents/consultations/2018/Draft_Public_Health_Strategic_Plan_Web.pdf

Greater Shepparton City Council. (2019). Maternal and Child Health Annual Report 2018-2019. Internal document. Community Directorate.

Greater Shepparton City Council (2016). City of Greater Shepparton Community Profile. profile.id. Retrieved from <https://profile.id.com.au/shepparton/seifa-disadvantage>

Greater Shepparton Lighthouse Project. (2018). One Thousand Conversations Report. Retrieved from <http://www.gslp.com.au/wp-content/uploads/GSLP-1000-Conversations-Report-2018.pdf>

Heckman, J. The Heckman Curve. Retrieved from <https://heckmanequation.org/resource/the-heckman-curve/>

Moore, T.G., Arefadib, N., Deery, A., & West, S. (2017). The First Thousand Days: An Evidence Paper. Parkville, Victoria; Centre for Community Child Health, Murdoch Children's Research Institute

Profile id (2018). Greater Shepparton Community Profile. Retrieved from <https://profile.id.com.au/shepparton/internet-connection?BMID=40>



APPENDIX

Linking the Greater Shepparton Best Start Early Years Plan 2020-2025 to other Council Plans

| BSEYP Theme - Play | Relationship to Council Plan | Relationship to Public Health Strategic Plan 2018-2028 |
|---|---|---|
| <p>Play</p> <ul style="list-style-type: none"> Children and families engage and participate in Supported Playgroups Children and families are active and playing together | <p>2.1 Greater Shepparton is a welcoming, inclusive and safe place for all.</p> <p>2.4 Social and cultural, educational and employment opportunities are created to enable children, young people, individuals and families to actively participate in their community.</p> <p>2.7 Greater Shepparton is valued for cultural celebrations, inclusion and engagement of our diverse communities.</p> <p>2.8 Our Aboriginal culture and people are valued and celebrated, with collaborative actions undertaken to enable peaceful, healthy and productive lives in a safe environment.</p> | <ul style="list-style-type: none"> Provide inclusive physical activity and active participation opportunity for all ages and abilities. Increase the proportion of people meeting the recommended guidelines for physical activity from baseline 54 per cent. |

| BSEYP Theme - Learn | Relationship to Council Plan | Relationship to Public Health Strategic Plan 2018-2028 |
|---|--|---|
| <p>Learn</p> <ul style="list-style-type: none"> Children engage and participate in early childhood education Families are supported to have the knowledge, skills and confidence to be their child's first educator Children have access to the supports they need to ensure active engagement in learning | <p>2.3 Lifelong learning is valued and fostered in our community</p> <p>2.4 Social and cultural, educational and employment opportunities are created to enable children, young people, individuals and families to actively participate in their community.</p> <p>2.7 Greater Shepparton is valued for cultural celebrations, inclusion and engagement of our diverse communities.</p> <p>2.8 Our Aboriginal culture and people are valued and celebrated, with collaborative actions undertaken to enable peaceful, healthy and productive lives in a safe environment.</p> | <ul style="list-style-type: none"> Decrease the proportion of children at school entry who are developmentally vulnerable on one or more domains of the AEDC |

| BSEYP Theme - Thrive | Relationship to Council Plan | Relationship to Public Health Strategic Plan 2018-2028 |
|--|---|--|
| <p>Thrive</p> <ul style="list-style-type: none"> Children and families actively engage with MCH services, attending key ages and stages visits Our community is supported to fully understand the critical importance of the First Thousand Days | <p>2.4 Social and cultural, educational and employment opportunities are created to enable children, young people, individuals and families to actively participate in their community.</p> <p>2.7 Greater Shepparton is valued for cultural celebrations, inclusion and engagement of our diverse communities.</p> <p>2.8 Our Aboriginal culture and people are valued and celebrated, with collaborative actions undertaken to enable peaceful, healthy and productive lives in a safe environment.</p> | <ul style="list-style-type: none"> Increase the proportion of children attending key ages and stages visits |



| BSEYP Theme - Voice | Relationship to Council Plan | Relationship to Public Health Strategic Plan 2018-2028 |
|---|--|---|
| <p>Voice</p> <ul style="list-style-type: none"> • Children have the language and communication skills required for optimal learning • Consultation and feedback is sought from families and children to inform early years planning and development | <p>2.1 Greater Shepparton is a welcoming, inclusive and safe place for all.</p> <p>2.3 Lifelong learning is valued and fostered in our community.</p> <p>2.4 Social and cultural, educational and employment opportunities are created to enable children, young people, individuals and families to actively participate in their community</p> | <ul style="list-style-type: none"> • Decrease the proportion of children at school entry who are developmentally vulnerable on one or more domains of the AEDC |

| BSEYP Theme - Share | Relationship to Council Plan | Relationship to Public Health Strategic Plan 2018-2028 |
|---------------------|------------------------------|--|
| | | |





For further information please contact:

Greater Shepparton City Council

Children and Youth Services

90 Welsford Street

Ph: (03) 5832 9783

Email: council@shepparton.vic.gov.au

www.greatershepparton.com.au



GREATER
SHEPPARTON