

A program by



BICYCLE
NETWORK

Super Tuesday

Bike Commuter Survey

City of Greater Shepparton

May 2014



SUPER TUESDAY

Super Tuesday Bike Count 2014

The Count

Super Tuesday is Australia's and the world's biggest and longest running visual bike count. It measures bike commuter flows in the morning peak (7–9am). The count establishes an accurate annual benchmark for bicycle commuter numbers to facilitate informed decisions on relevant and up-to-date information. This year, the count was conducted on Tuesday, 4 March.

2014 is the eighth consecutive year of the annual Super Tuesday Bike Count. The first count in 2007 occurred in four inner metropolitan Melbourne councils. This year the count took place in 40 municipalities at 1007 sites across New South Wales (10), South Australia (2), Victoria (21) and Western Australia (7).

Weather

The conditions were generally dry and warm in most areas. In Victoria the weather was sunny. South Australia and Western Australia also experienced sunny and warm conditions. In New South Wales, it was pleasant morning for bicycle commuters in Newcastle region, while it was raining around the Sydney Metropolitan region.

This Year's Results

Victoria

There was an overall of 9.5% increase across all the count locations in Victoria. Some of the strongest growth in commuter rider numbers was in the Brimbank, Kingston and Glen Eira municipalities in inner Melbourne as well as Greater Shepparton in the regional areas. The intersection of Swanston Street and Flinders Street again recorded the busiest count location in Australia (1776 riders) despite a slight decrease in the number of riders (4.7%).

Male and Female riders' ratios were also counted with the Yarra and Port Phillip councils. Napier Street in inner north suburb was with women comprising 67% of total riders on this bicycle priority route. On the contrary, St Kilda Road where commuters ride on narrow and squeezed bike lanes with fast-moving traffic, female riders made up only 27% on this non-preferred route.

New South Wales

Sydney metropolitan councils experienced a slight decrease of 7% overall. Rain leading up to and on the day of the count contributed to this result. The regional council of Albury recorded the highest percentage increase overall of 21.3% among other New South Wales councils. The bike path towards Sydney CBD via Anzac Bridge was again the busiest site with a total number of 786 riders despite of a slight decrease of 6.8%.

Western Australia

Western Australian councils recorded a significant increase in rider numbers across count locations with an average of 32.7% recorded. The number of bicycle commuters entering the Perth CBD via the Principal Shared Path at the corner of Loftus and Thomas Streets increased by 26%. This was the busiest site in Western Australia with 1076 riders in total.

South Australia

It was the first year that the City of Unley participated in the Super Tuesday Bike Count. The shared path along the railway line was the busiest commuter route for people riding towards the Adelaide CBD from the south. The shared path along the River Torrens was the main bicycle commuting trunk for commuters travelling to the CBD from the west.

The Future

The need for local governments to maintain and develop investment in quality bicycle infrastructure remains paramount as more people commute by bike. This investment needs to continue for the long-term sustainability of bike commuting so that local governments throughout the country can reap the health, transport and environmental benefits that bike riding delivers.

Female Riders

Women are considered an 'indicator species' of the health of the riding environment - the more women who commute by bike, the better the bike facilities. In the top international cycling cities women comprise more than half of all commuting riders. This is thought to be because women are generally more risk averse; with safe bike infrastructure being a prerequisite for riding.



Executive Summary

The data is collected between 7am and 9am in the morning of Tuesday 4 March 2014 at 16 sites in the Greater Shepparton.

The weather was sunny in Greater Shepparton on Super Tuesday 2014.

Key Findings

The key findings from Super Tuesday 2014 in Greater Shepparton include:

- The busiest commuter site was the intersection of Goulburn Valley Highway and Yanha Burti' Shared Path (site 5145), with a total of 114 riders.
- Greater Shepparton recorded an average of 57 riders per hour at the busiest site which ranked 30th among survey areas.
- The boulevard and Goulburn Valley Highway was the popular bicycle commuter routes.
- The site that shows the most significant increase in percentage (356%) and number (89 riders) is the intersection of Goulburn Valley Highway and Yanha Burti' shared path (site 5145).
- The sites that show the most significant decrease:
 - in percentage (45%) is the intersection of Thompson Street, Midland Highway/High Street and St Georges Road (site 5142).
 - in number (20 riders) is the intersection of Hawdon Street, Andrew Fairley Avenue, Railway Parade and Knight Street (site 5139).
- Overall the number of riders in Greater Shepparton has increased by 60.9% compared with previous count.

Contents

- Super Tuesday Bike Count 2014 2
- Executive Summary 4
- Contents 5
- List of Figures 6
- List of Tables 6
- Introduction 7
 - Site Locations 7
 - Number of Riders 8
- Observations 9
 - Top 5 Busiest Sites 9
 - Other Significant Findings 15
 - Bi-directional Link Volumes 15
 - Riders per Hour 16

List of Figures

Figure 1: Count Sites in Greater Shepparton for Super Tuesday 2014	7
Figure 2: The Five Busiest Commuter Locations in Greater Shepparton.....	9
Figure 3: Location of Site 5145.....	10
Figure 4: Commuter Flow at site 5145.....	10
Figure 5: Location of Site 5136.....	11
Figure 6: Commuter Flow at site 5136.....	11
Figure 7: Location of Site 5148.....	12
Figure 8: Commuter Flow at site 5148.....	12
Figure 9: Location of Site 5140.....	13
Figure 10: Location of Site 5146	14
Figure 11: Site 5142 – Thompson St, Midland Hwy/High St and St Georges Rd	15
Figure 12: Average Bi-directional Link Volumes in Greater Shepparton.....	15
Figure 13: Riders per Hour	16

List of Tables

Table 1: Total Number of Riders in Greater Shepparton.....	8
--	---

Introduction

Site Locations

16 out of 18 identified sites were surveyed between 7am to 9am in the morning of Tuesday 5 March 2014 in Greater Shepparton.

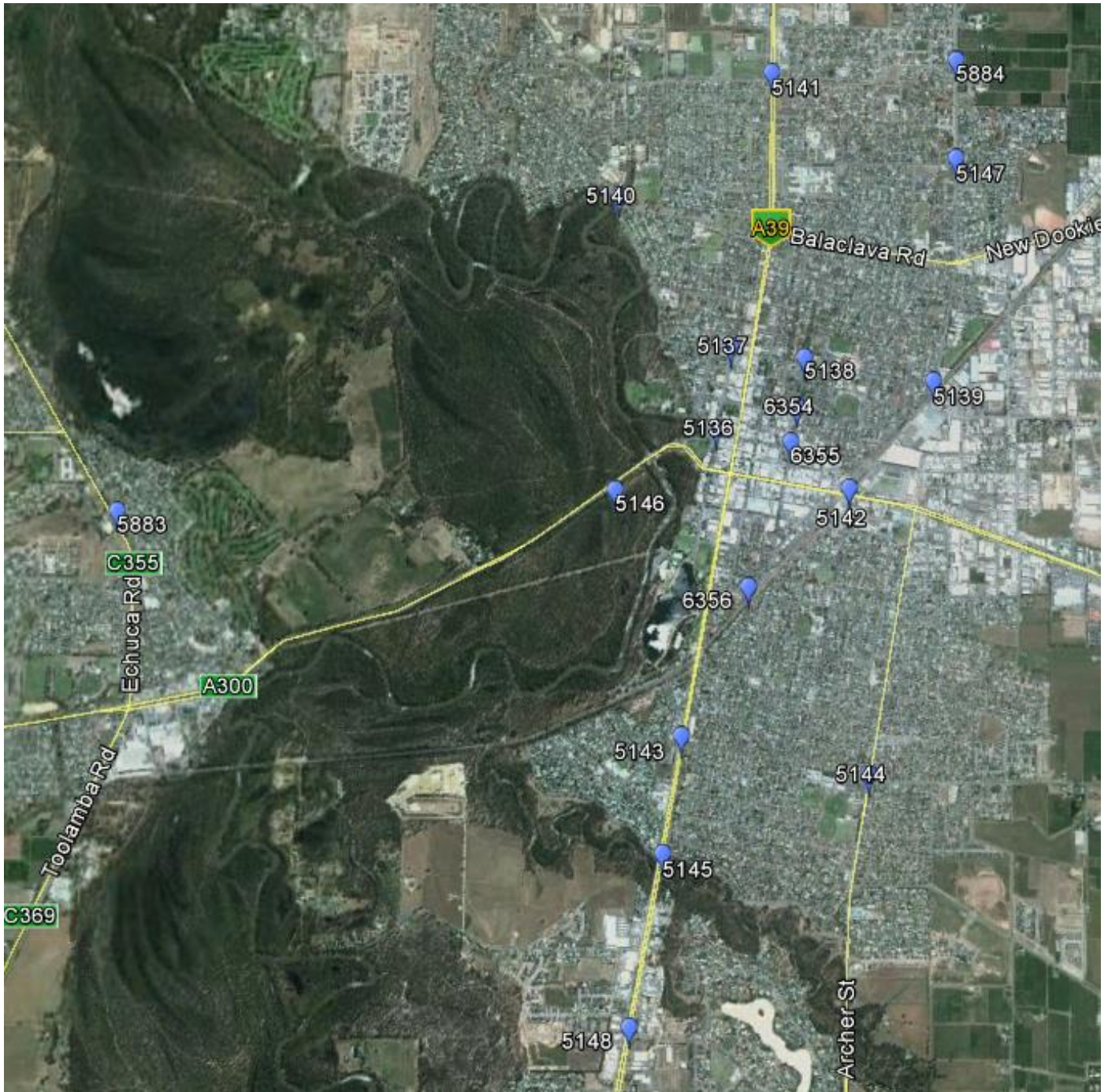


Figure 1: Count Sites in Greater Shepparton for Super Tuesday 2014
([Click here](#) for a greater understanding of rider movements at each of the intersections)

Number of Riders

Table 1: Total Number of Riders in Greater Shepparton

Legs	Site Description	Site ID	Total (2011)	Total (2014)	% Change
4	Goulburn Valley Hwy [N], Yanha Gurti' Share Path [SE], Hwy Bridge [S], Yanha Gurti' Share Path [NW]	5145	63	114	81.0%
4	Welsford St [N], Fryers St [E], Welsford St [S], Fryers St [W]	5136	36	79	119.4%
3	Goulburn Valley Hwy [N], Kialla Lakes Drv [E], Goulburn Valley Hwy [S]	5148	42	61	45.2%
4	Maculata Dr [NE], Balaclava Rd [E], The Boulevard [S], The Boulevard [NW]	5140	51	57	11.8%
3	Shepparton-Mooroopna Causeway Path [NE], Causeway-Aquamoves Path [S], Shepparton-Mooroopna Causeway Path [SW]	5146	36	51	41.7%
4	Hawdon St [N], Andrew Fairley Ave [SE], Railway Pde [SW], Knight St [W]	5139	38	36	-5.3%
4	Goulburn Valley Hwy [N], Pine Rd [E], Goulburn Valley Hwy [S], Brauman St [W]	5141	34	36	5.9%
4	Archer St [N], Poplar Ave [E], Archer St [S], Wilmot Rd [NW]	5144	33	36	9.1%
3	Knight St [E], Welsford St [S], Knight St [W]	5137	28	28	0.0%
3	Verney Rd [N], Verney Rd [S], Graham St [W]	5147	36	25	-30.6%
4	Corio St to Knight St [N], Nixon St to Deakin Reserve [E], Corio St [S], Nixon St [W]	6354	-	23	
3	Johnson St [NE], Hayes St to railway line [E], Hayes St to lake [W]	6356	-	23	
4	Thompson St [NE], Midland Hwy/High St [E], St Georges Rd [S], Midland Hwy/High St [W]	5142	30	22	-26.7%
3	Verney Rd [N], Verney Rd [S], Pine Rd [W]	5884	-	19	
4	Corio St to Nixon St [N], Fryers St to TAFE [E], Corio St [S], Fryers St [W]	6355	-	17	
4	Baker Cres [NE], Echuca Rd [SE], Pedestrian Crossing [SW], Echuca Rd [NW]	5883	-	16	
4	Corio St [N], Knight St [E], Corio St [S], Knight St [W]	5138	-	-	
4	Goulburn Valley Hwy [N], Wilmot Rd [E], Goulburn Valley Hwy [S], Longstaff St [W]	5143	-	-	

- Data unavailable

Observations

Top 5 Busiest Sites

Figure 2 shows the five busiest intersections and their growth in Greater Shepparton Super Tuesday count.

The activity recorded at these locations is included in the following chapters.

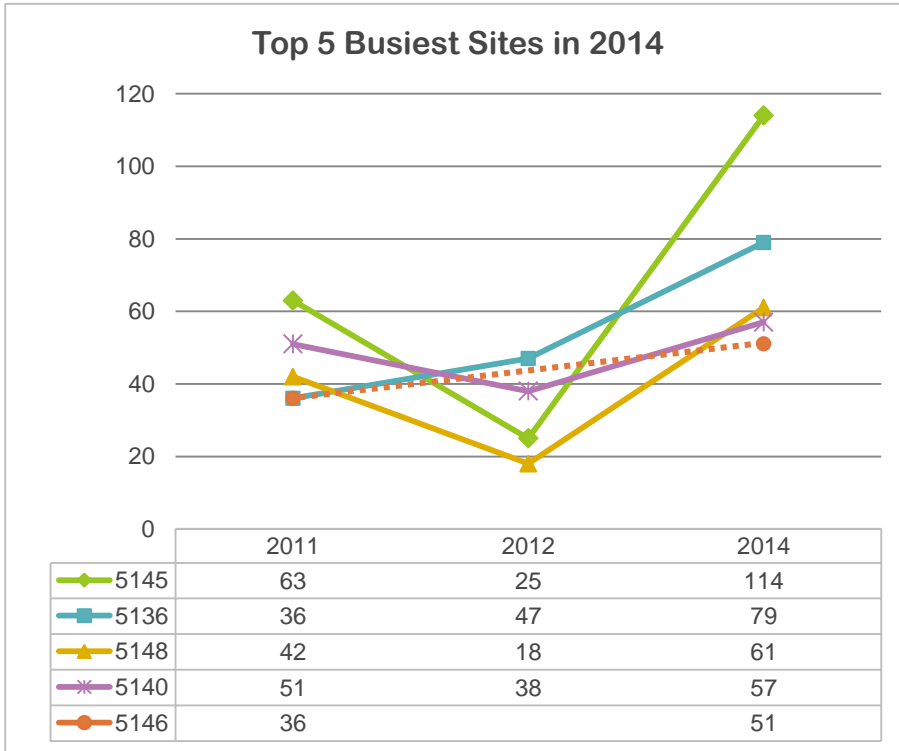


Figure 2: The Five Busiest Commuter Locations in Greater Shepparton



Figure 3: Location of Site 5145



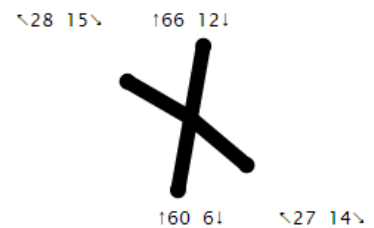
Figure 4: Commuter Flow at site 5145
City Bound (pink) and Out Bound (green)

Site 5145

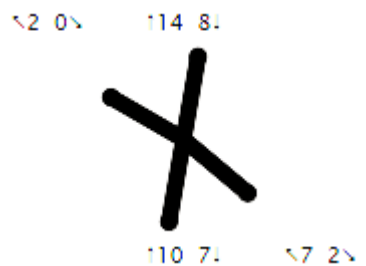
Goulburn Valley Hwy [N], Yanha Gurti' Share Path [SE], Hwy Bridge [S], Yanha Gurti' Share Path [NW]

Site 5145 was the busiest commuter route in the Greater Shepparton municipality, with a total of 114 riders. This is a significant increase of 356% compared with 2012. The majority of the riders (51%) were travelling north along Goulburn Valley Highway.

2014 (Total: 114)



2012 (Total: 25)



Observations

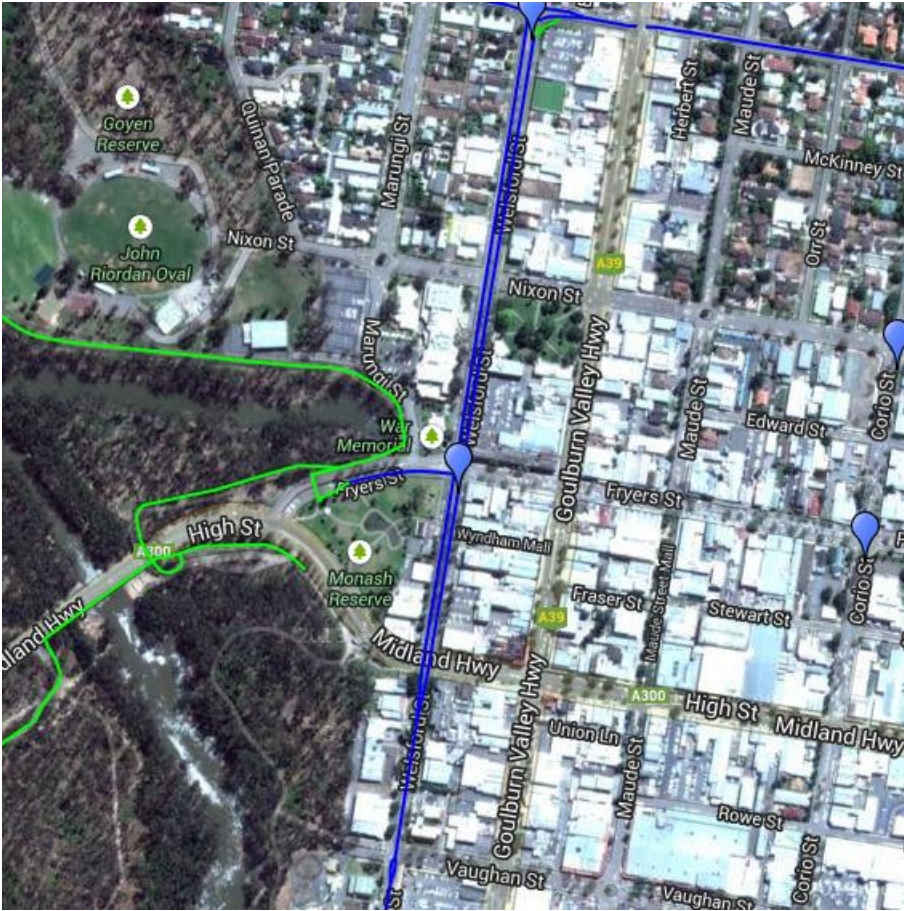


Figure 5: Location of Site 5136



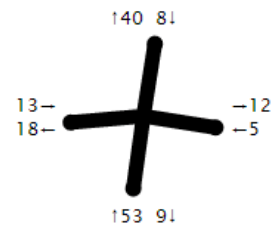
Figure 6: Commuter Flow at site 5136
City Bound (pink) and Out Bound (green)

Site 5136

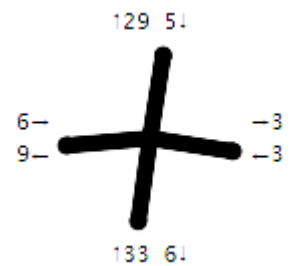
Welsford St [N], Fryers St [E], Welsford St [S], Fryers St [W]

Site 5136 was the second busiest site recorded on Super Tuesday, with a total of 79 riders. This is an increase of 68% compared with 2012. The majority of the flow was on Welsford Street heading north which was 43%

2014 (Total: 79)



2012 (Total: 47)



Observations



Figure 7: Location of Site 5148



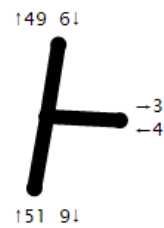
Figure 8: Commuter Flow at site 5148
City Bound (pink) and Out Bound (green)

Site 5148

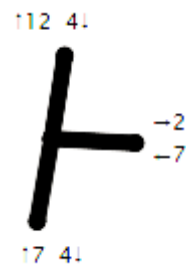
Goulburn Valley Hwy [N], Kialla Lakes Drv [E], Goulburn Valley Hwy [S]

Site 5148 was the third busiest site with 61 riders, representing a significant 239% increase from 2012. 83% of the riders taking this route travelled North along Goulburn Valley Highway.

2014 (Total: 61)



2012 (Total: 18)



Observations

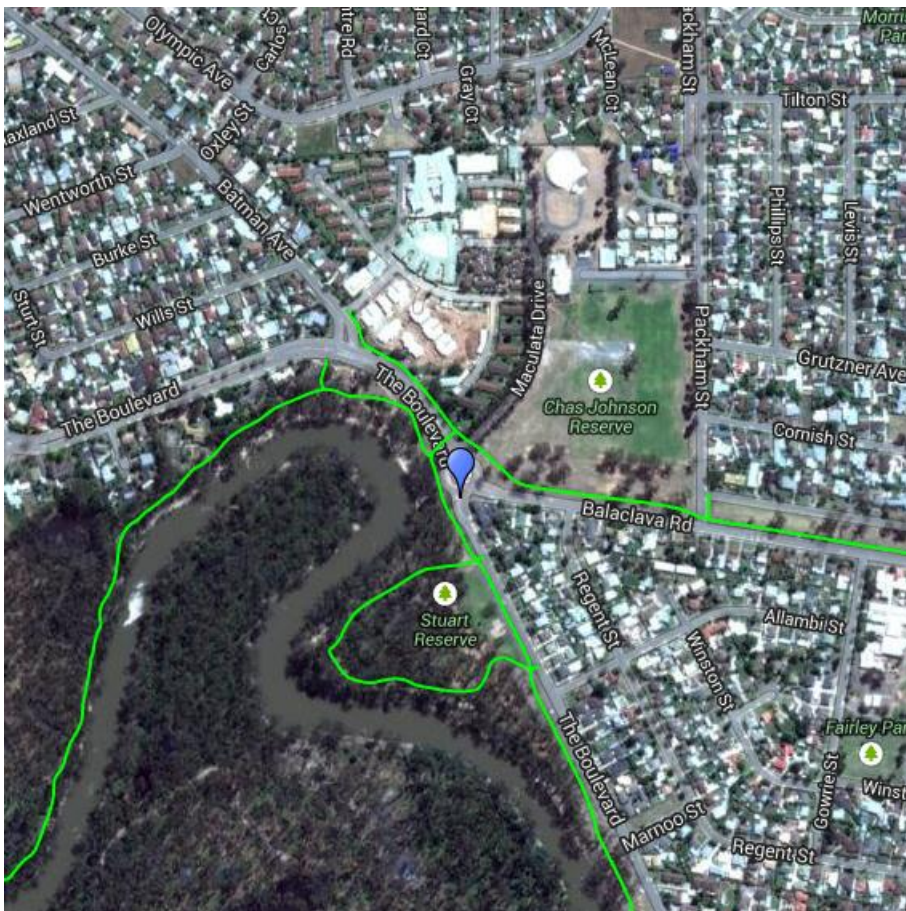


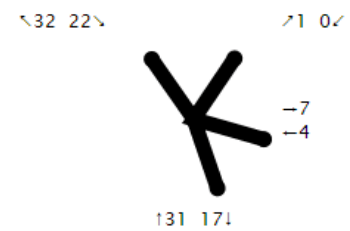
Figure 9: Location of Site 5140

Site 5140

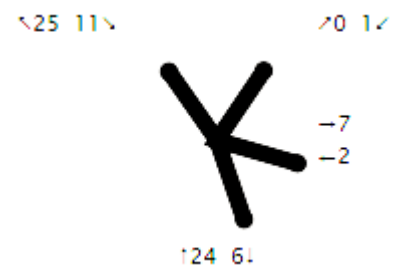
Maculata Dr [NE], Balaclava Rd [E], The Boulevard [S], The Boulevard [NW]

Site 5140 was the fourth busiest site with 57 riders. Usage at this location by riders is up 50% compared with 2012. The riders travelling along The Boulevard made up 93% from the overall total

2014 (Total: 57)



2012 (Total: 38)



Observations

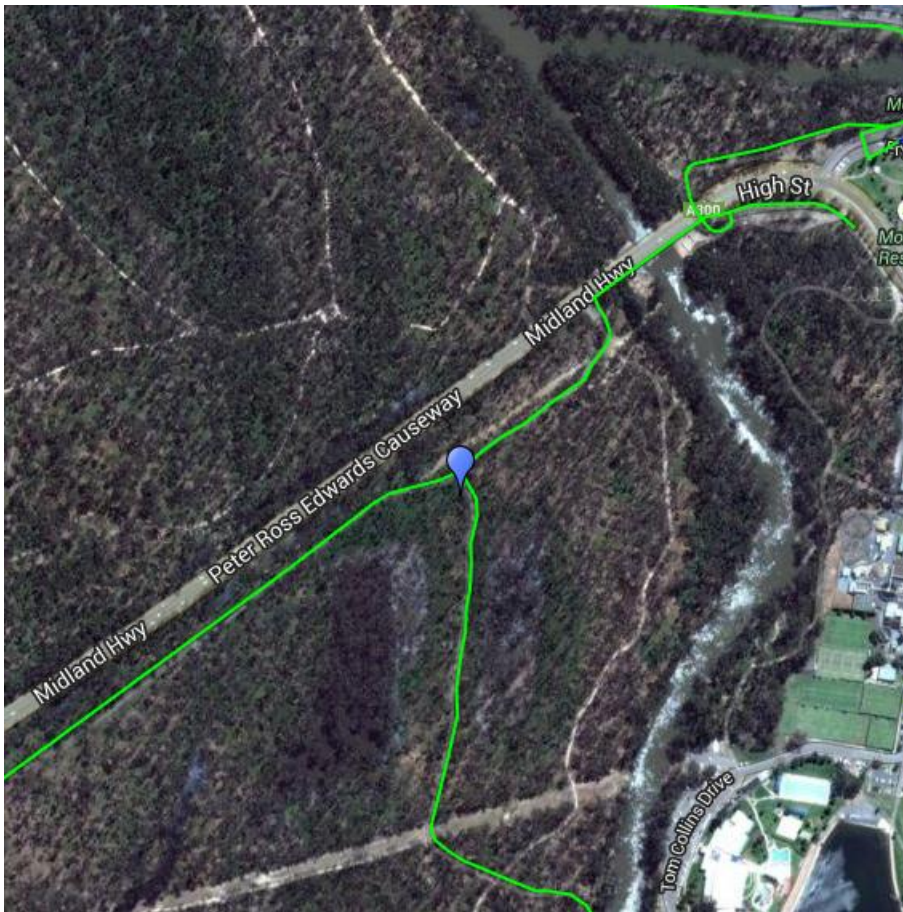


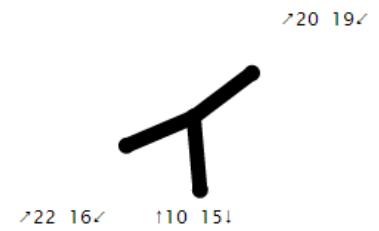
Figure 10: Location of Site 5146

Site 5146

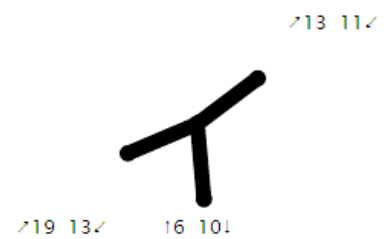
Shepparton-Mooroopna Causeway Path [NE], Causeway-Aquamoves Path [S], Shepparton-Mooroopna Causeway Path [SW]

Site 5146 was the fifth busiest site with 51 riders, representing 41.7% increase from 2011. 64% of the riders travelled along the Midland Highway.

2014 (Total: 51)



2011 (Total: 36)



Observations

Other Significant Findings

Site 5142

Site 5142 recorded the biggest percentage decrease (45%) of all sites in the Greater Shepparton from 40 riders in 2012 to 22 riders in 2014. The riders coming on High Street East significantly declined from 14 to 1 compare with 2012.

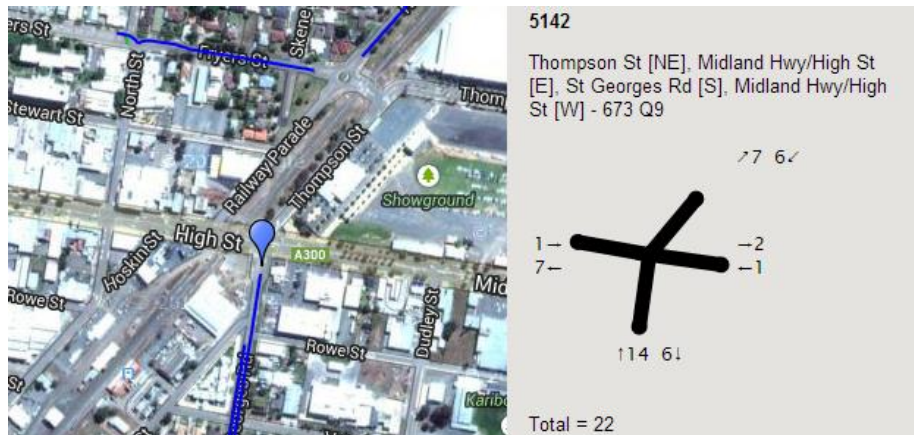


Figure 11: Site 5142 – Thompson St, Midland Hwy/High St and St Georges Rd

Bi-directional Link Volumes

The following roads in Greater Shepparton have been identified as the main bicycle commuter routes on Tuesday morning peak period.

- The Boulevard (52 riders on average)
- Goulburn Valley Hwy (45)
- Welsford St (44)
- Yanha Gunti Shared Path (43)
- Highland Hwy Path/Fryers St (24)
- Railway Pde/Hawdon St/Verney Rd (19)
- Knight St (16)
- Echuca Rd (16)
- Corio St (12)

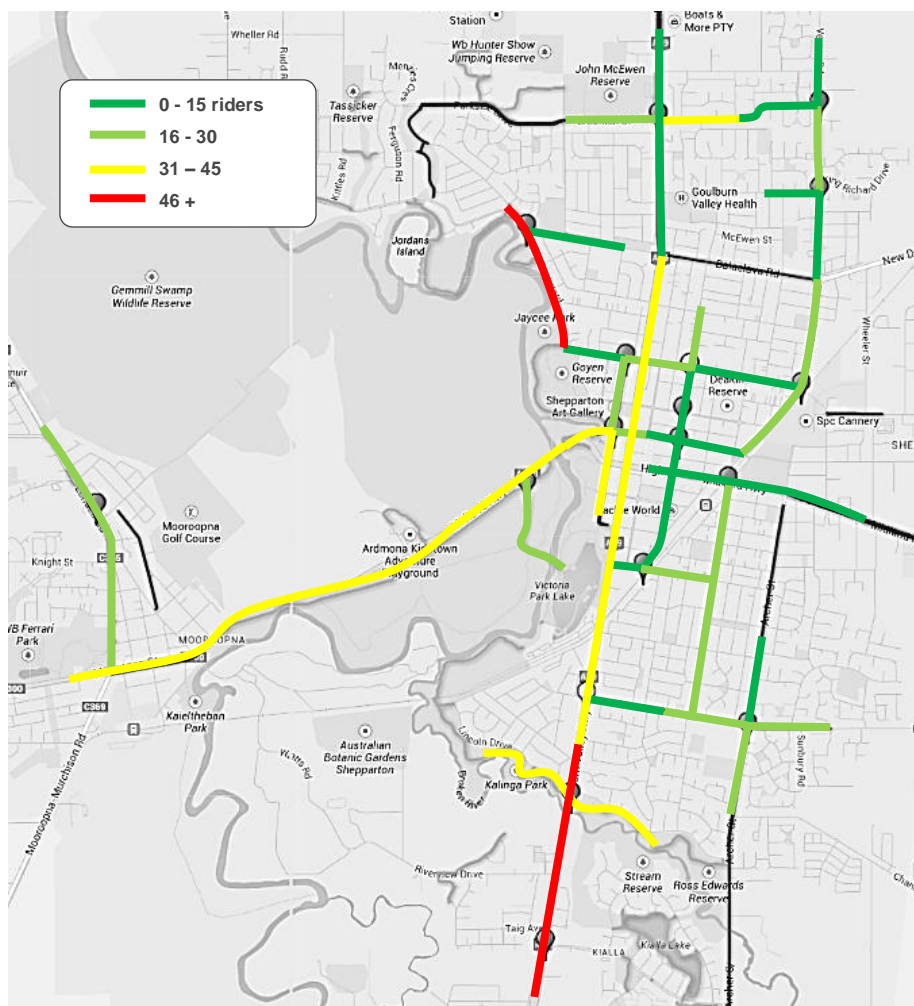


Figure 12: Average Bi-directional Link Volumes in Greater Shepparton

Riders per Hour

Riders per hour is calculated using the busiest count site in each participating municipality.

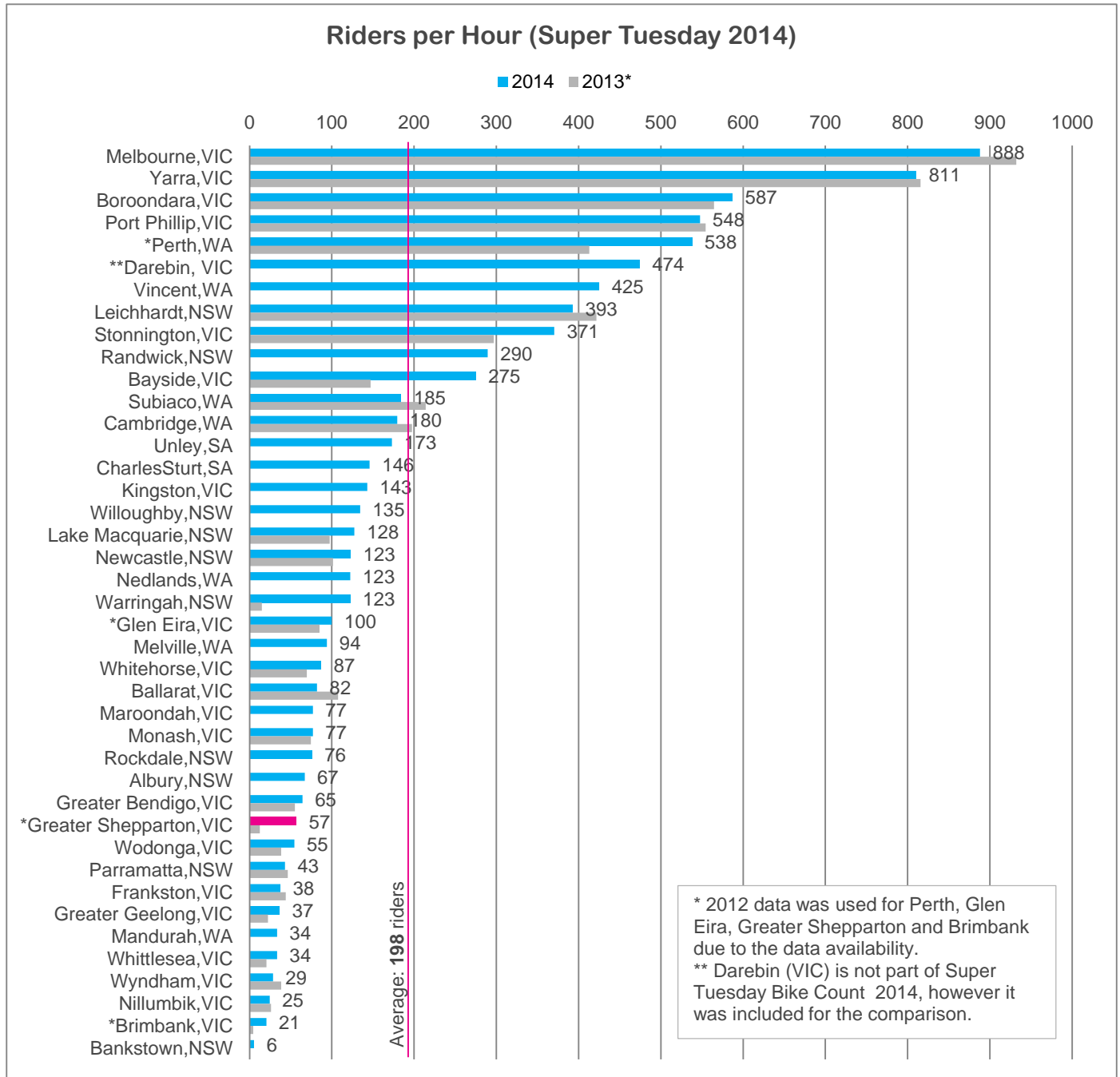


Figure 13: Riders per Hour

Figure 13 shows that Greater Shepparton was ranked 30th overall in the busiest count sites among survey areas, with an average of 57 riders per hour at the busiest site.

This shows that Greater Shepparton is comparable to the regional Victorian council of Wodonga.

Contact Us

Ph: (03) 8376 8888

Email: bikefutures@bicyclenetwork.com.au



SUPER TUESDAY